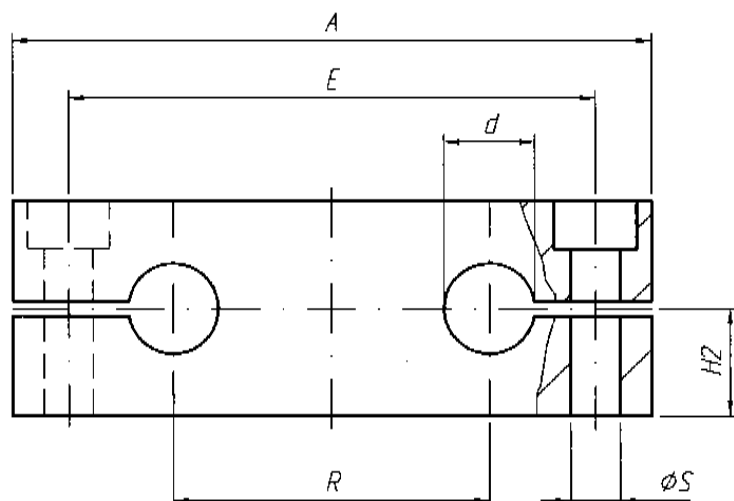
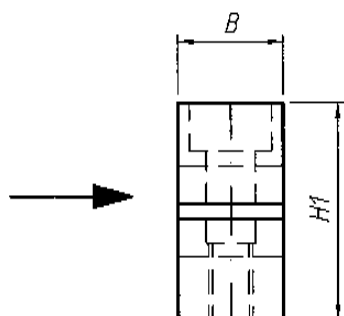


Aluminiumlegering  
Fixerad

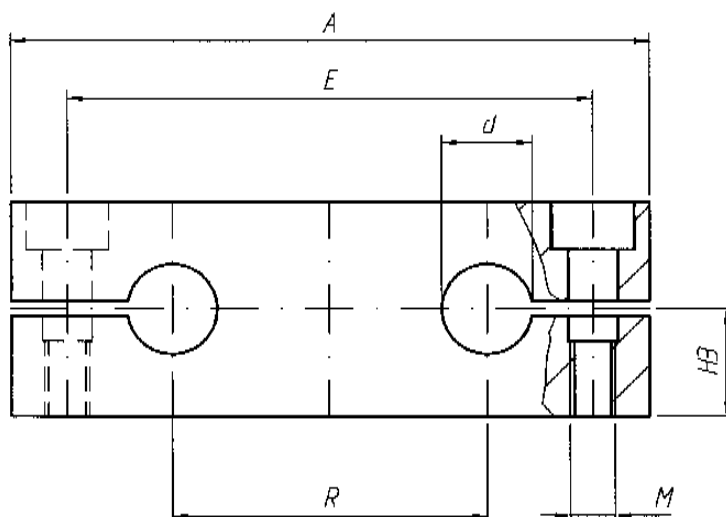


Typ	Mått i mm								Vikt [kg]
TAA	d	A	B	H	H2 <sup>+0,015</sup>	R	øS	E	
TAA-08	8	65	12	23	12,5	32	5,5	52	0,04
TAA-12	12	85	14	32	18,0	42	6,6	70	0,09
TAA-16	16	100	18	36	20,0	54	9,0	82	0,14
TAA-20	20	130	20	46	25,0	72	11,0	108	0,25
TAA-25	25	160	25	56	30,0	88	13,5	132	0,47
TAA-30	30	180	25	64	35,0	96	13,5	150	0,62
TAA-40	40	230	30	80	44,0	122	17,5	190	1,15

-Avståndet „R“ ger axlarnas centrumavstånd för typerna QAG och QAG-OP, kapitel III  
-Tillhörande precisionsstälaxlar, se kapitel V

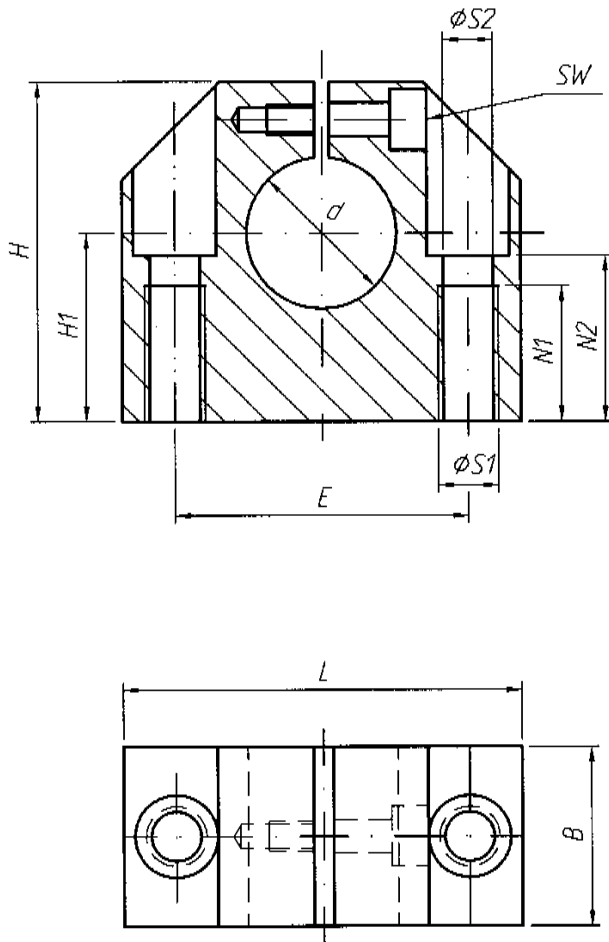


Aluminiumlegering  
Rörlig



Typ	Mått i mm								Vikt [kg]
TAB	d	A	B	H1	H3 <sup>±0,015</sup>	M	E	R	
TAB-08	8	65	12	22	11	M5	52	32	0,04
TAB-12	12	85	14	28	14	M6	70	42	0,07
TAB-16	16	100	18	32	16	M8	82	54	0,13
TAB-20	20	130	20	42	21	M10	108	72	0,22
TAB-25	25	160	25	52	26	M12	132	88	0,44
TAB-30	30	180	25	58	29	M12	150	96	0,56
TAB-40	40	230	30	72	36	M16	190	122	1,00

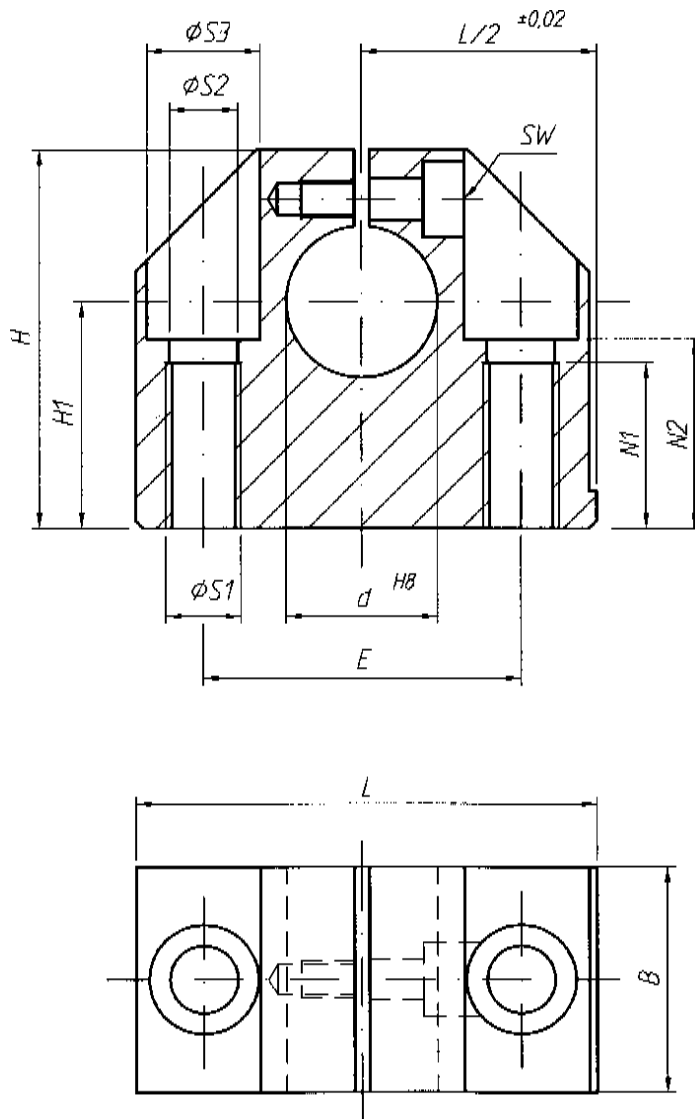
- Avståndet „R“ ger axlarnas centrumavstånd för typerna QAG och QAG-OP, kapitel III  
 - Tillhörande precisionsstälaxlar, se kapitel V



Kompakt  
Aluminiumlegering

Typ	Mått i mm											Vikt
WBC	d	B	H	H1 $\pm 0,01$	L	S1	S2	E $\pm 0,15$	N1	N2	SW	[kg]
WBC-06	6	16	27	15	32	M5	4,3	22	11	13	2,5	0,03
WBC-08	8	16	27	16	32	M5	4,3	22	11	13	2,5	0,03
WBC-10	10	18	33	18	40	M6	5,3	27	13	16	3,0	0,05
WBC-12	12	18	33	19	40	M6	5,3	27	13	16	3,0	0,05
WBC-14	14	20	38	20	45	M6	5,3	32	13	18	3,0	0,07
WBC-16	16	20	38	22	45	M6	5,3	32	13	18	3,0	0,07
WBC-20	20	24	45	25	53	M8	6,6	39	18	22	4,0	0,12
WBC-25	25	28	54	31	62	M10	8,4	44	22	26	5,0	0,17
WBC-30	30	30	60	34	67	M10	8,4	49	22	29	5,0	0,22
WBC-40	40	40	76	42	87	M12	10,5	66	26	38	6,0	0,48
WBC-50	50	50	92	50	103	M16	13,5	80	34	46	8,0	0,82

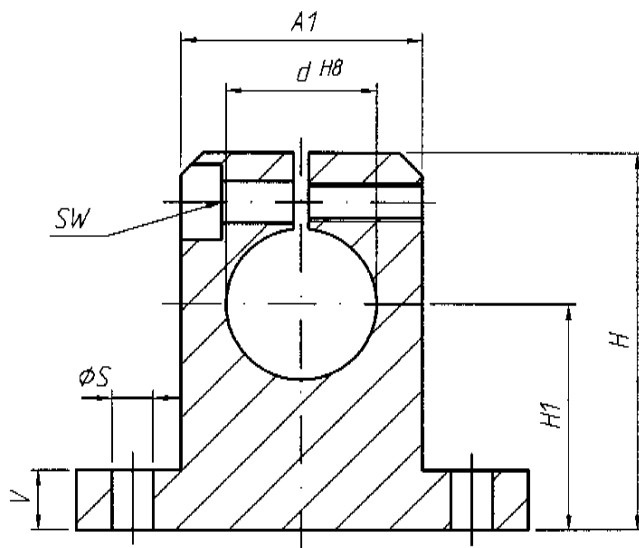
-Tillhörande precisionsstålaxlar, se kapitel V



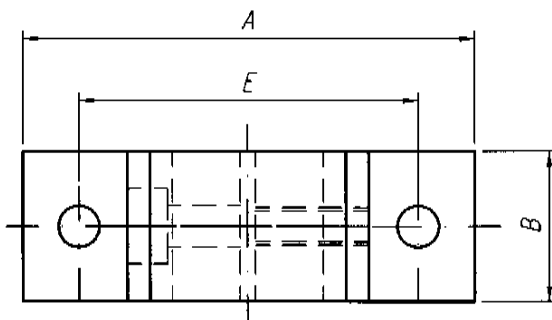
Axelbock  
Aluminiumlegering

Typ	Mått i mm											Vikt
WBA	d	B	H	H1 $\pm 0,02$	L	S1	S2	S3	E $\pm 0,15$	N1	N2	[kg]
WBA-08	8	18	28	15	32	M4	3,5	6	22	9	13,0	0,04
WBA-12	12	20	35	20	43	M6	5,3	10	30	13	16,5	0,10
WBA-16	16	24	42	25	53	M8	6,6	11	38	18	21,0	0,15
WBA-20	20	30	50	30	60	M10	8,4	15	42	22	25,0	0,23
WBA-25	25	38	60	35	78	M12	10,5	18	56	26	30,0	0,41
WBA-30	30	40	70	40	87	M12	10,5	18	64	26	34,0	0,53
WBA-40	40	48	90	50	108	M16	13,5	20	82	34	44,0	0,99
WBA-50	50	58	105	60	132	M20	17,5	26	100	43	49,0	1,25

-Tillhörande precisionsstälaxlar, se kapitel V

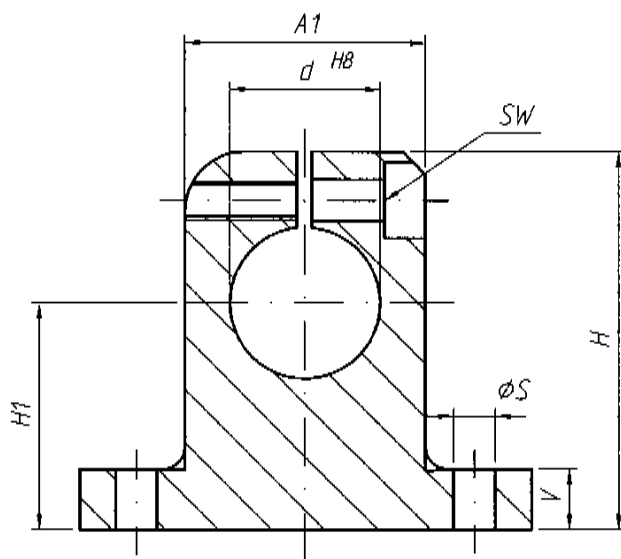


Axelbock, standard  
Aluminiumlegering

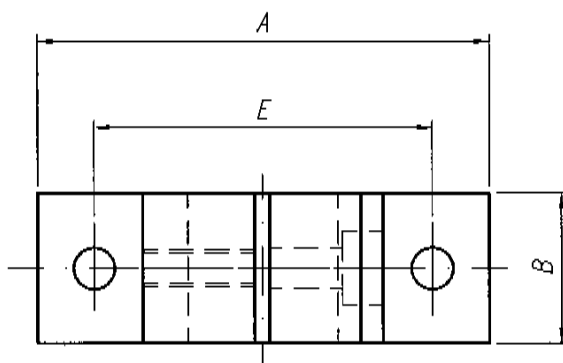


Typ	Mått i mm										Vikt [kg]	
	WBAS	d	H	H1 <sup>±0,02</sup>	A	A1	B	E	S	V		SW
WBAS-08		8	27	15	30	16	10	25 <sup>±0,15</sup>	4,5	5,0	2,5	0,012
WBAS-12		12	35	20	40	20	12	32 <sup>±0,15</sup>	5,5	5,5	3,0	0,023
WBAS-16		16	42	25	50	26	16	40 <sup>±0,15</sup>	5,5	6,5	3,0	0,035
WBAS-20		20	50	30	60	32	20	45 <sup>±0,15</sup>	5,5	8,0	3,0	0,067
WBAS-25		25	58	35	70	38	25	60 <sup>±0,15</sup>	6,6	9,0	4,0	0,140
WBAS-30		30	68	40	80	45	28	68 <sup>±0,20</sup>	9,0	10,0	5,0	0,200
WBAS-40		40	86	50	100	56	32	86 <sup>±0,20</sup>	11,0	12,0	6,0	0,480
WBAS-50		50	100	60 <sup>±0,015</sup>	130	80	40	108 <sup>±0,20</sup>	11,0	14,0	6,0	1,90
WBAS-60		60	124	75 <sup>±0,015</sup>	160	100	48	132 <sup>±0,25</sup>	13,5	15,0	8,0	3,60
WBAS-80		80	160	100 <sup>±0,015</sup>	200	130	60	170 <sup>±0,50</sup>	17,5	22,0	10,0	7,30

-Tillhörande precisionsstålaxlar, se kapitel V  
-Mått H1, A, A1, B, V toleranser enl. DIN 1686 - GTB 15

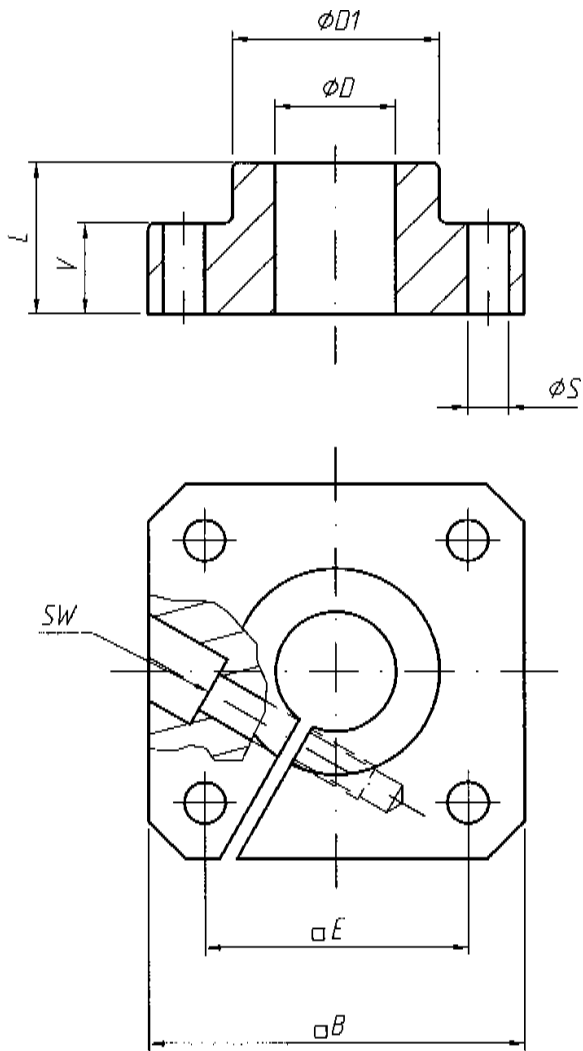


Axelbock av stål



Typ	Mått i mm										Vikt [kg]
	WBS	d	H	H1	A	A1	B	E	S	V	
WBS-08	8	27	15 <sup>±0,010</sup>	32	16	10	25 <sup>±0,15</sup>	4,5	5,2	2,5	0,03
WBS-12	12	35	20 <sup>±0,010</sup>	42	20	12	32 <sup>±0,15</sup>	5,5	5,5	3,0	0,06
WBS-16	16	42	25 <sup>±0,010</sup>	50	26	16	40 <sup>±0,15</sup>	5,5	6,5	3,0	0,11
WBS-20	20	50	30 <sup>±0,010</sup>	60	32	20	45 <sup>±0,15</sup>	5,5	8,0	3,0	0,21
WBS-25	25	58	35 <sup>±0,010</sup>	74	38	25	60 <sup>±0,15</sup>	6,6	9,0	4,0	0,35
WBS-30	30	68	40 <sup>±0,010</sup>	84	45	28	68 <sup>±0,20</sup>	9,0	10,0	5,0	0,52
WBS-40	40	86	50 <sup>±0,010</sup>	108	56	32	86 <sup>±0,20</sup>	11,0	12,0	6,0	0,92
WBS-50	50	100	60 <sup>±0,015</sup>	130	80	40	108 <sup>±0,20</sup>	11,0	14,0	6,0	1,90
WBS-60	60	124	75 <sup>±0,015</sup>	160	100	48	132 <sup>±0,25</sup>	13,5	15,0	8,0	3,60
WBS-80	80	160	100 <sup>±0,015</sup>	200	130	60	170 <sup>±0,50</sup>	17,5	22,0	10,0	7,30

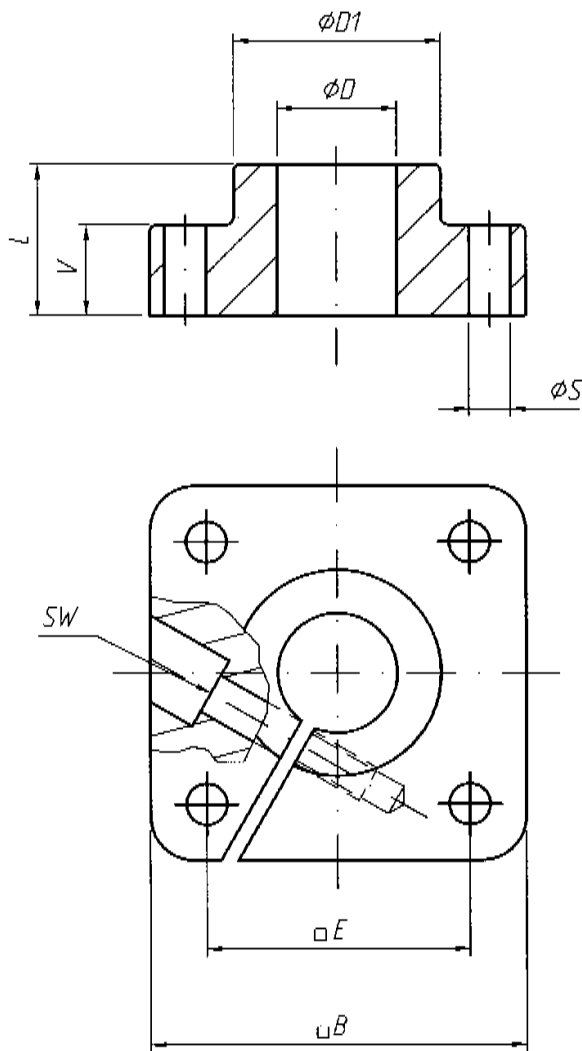
-Tillhörande precisionsstälaxlar, se kapitel V  
 -Mått H1, A, A1, B, V tolerans DIN 1686 - GTB 15



Fläns - axelbock  
Aluminiumlegering

Typ	Mått i mm								Vikt [kg]
	FWBA	D	B	L	D1	E	S <sup>H13</sup>	V	
FWBA-12	12	40	20	23,5	30 <sup>±0,12</sup>	5,5	12	3	0,06
FWBA-16	16	50	20	27,5	35 <sup>±0,12</sup>	5,5	12	3	0,08
FWBA-20	20	50	23	33,5	38 <sup>±0,15</sup>	6,6	14	4	0,10
FWBA-25	25	60	25	42,0	42 <sup>±0,15</sup>	6,6	16	5	0,15
FWBA-30	30	70	30	49,5	54 <sup>±0,25</sup>	9,0	19	6	0,30
FWBA-40	40	100	40	65,0	68 <sup>±0,25</sup>	11,0	26	8	0,70
FWBA-50	50	100	50	75,0	75 <sup>±0,25</sup>	11,0	36	8	1,20

-Tillhörande precisionsstålaxlar, se Kapitel V  
-Mått B, L, D, V toleranser enl. DIN 1686 - GTB 15

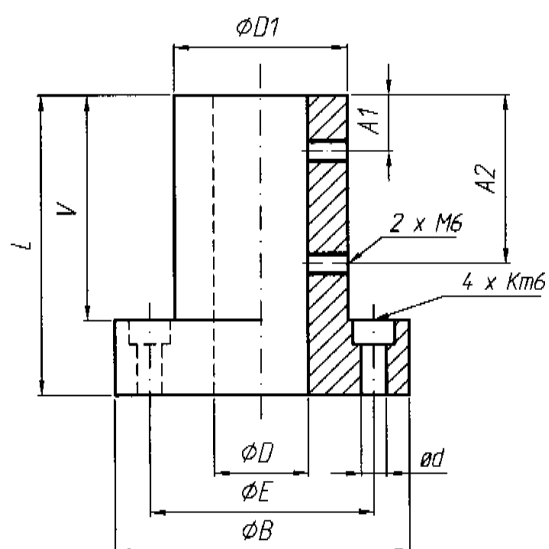
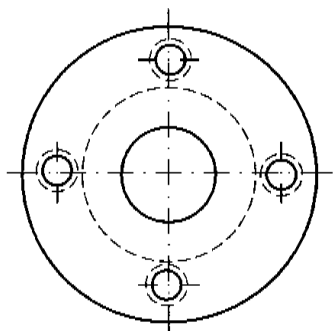


Fläns - axelbock  
Gjutjärn

Typ	Mått i mm								Vikt [kg]
	D	B	L	D1	E	S <sup>H13</sup>	V	SW	
FWBG-12	12	42	20	23,5	30 <sup>+0,12</sup>	5,5	12	3	0,15
FWBG-16	16	50	20	27,5	35 <sup>+0,12</sup>	5,5	12	3	0,21
FWBG-20	20	54	23	33,5	38 <sup>+0,15</sup>	6,6	14	4	0,28
FWBG-25	25	60	25	42,0	42 <sup>+0,15</sup>	6,6	16	5	0,41
FWBG-30	30	76	30	49,5	54 <sup>+0,25</sup>	9,0	19	6	0,75
FWBG-40	40	96	40	65,0	68 <sup>+0,25</sup>	11,0	26	8	1,65
FWBG-50	50	106	50	75,0	75 <sup>+0,25</sup>	11,0	36	8	2,60

-Tillhörande precisionsstälaxlar, se kapitel V  
-Mått B, L, D, V toleranser enl. DIN 1686 - GTB 15





Rund fläns  
Aluminiumlegering  
Extra styv

Typ	Mått i mm									Vikt [kg]
	D	D1	B	E	A1	A2	V	L	ød	
FWBT-25	25	46	78	59,4	15	45	60	80	6,6	1,35

-Tillhörande precisionsstålaxlar, se kapitel V  
-Mått B, L, D, V toleranser enl. DIN 1686 - GTB 15