

HEVALOID® CRELAST® SOLUTUS®
Endless... no splice or seam



Content

Page 2

HEVALOID®
High-performance
flat belts

Page 4

HEVALOID®
Feeder belts

Page 6

EC-Belts
Elastic feeder belts
and friction covers

Page 8

CRELAST®
Elastic flat belts

Page 10

Coating endless

Page 11

Processing: drilling,
grinding, marking,

Page 12

HEVALOID®
Tube winder belts

Page 14

HEVALOID®
Wire puller belts

Page 15

SOLUTUS®
Leather and fleece belts


HEVALOID®

HEVALOID® – High-performance flat belts

HEVALOID® - Flat belts consist of an endless woven polyester carcass coated with synthetic rubber resistant to abrasion and durable.

The production of truly endless belts – no splice or seam – results in very length-stable, highly flexible and perfectly running belts.

With various rubber qualities on our disposal, we design the belts exactly according to your requirements.



These truly endless belts are reliable due to the high performance in all kinds of power transmission and conveying applications.





Type	5005	5065	525 HF	525	535
Thickness	0.5 mm	0.7 mm	1.0 mm	1.5 mm	2.0 mm
Surface pulley side carrying side	smooth smooth	smooth smooth	profile smooth	profile smooth	profile smooth
Tensile member	Polyester, endless woven				
Quality of rubber	Chloroprene				
Properties	antistatic, resistant to abrasion				
Temperature resistance	-25 °C up to +100 °C				
Minimum pulley-Ø	4 mm	6 mm	10 mm	20 mm	40 mm
Tensile strength, endless	> 800 N/cm	> 1000 N/cm	1500 N/cm	1500 N/cm	3000 N/cm
Force for 1% elongation	> 120 N/cm	> 150 N/cm	200 N/cm	220 N/cm	350 N/cm
Pre-tension	0.8 – 1.0 %				
Dimensions	length	150–1500 mm	150–1500 mm	150–3000 mm	800–9000 mm
	width	3 – 140/280 mm	3 – 140/280 mm	3 – 280 mm	15 – 280 mm
	thickness	0.5 mm	0.7 mm	1.0 mm	1.5 mm
Tolerances	length	+/- 0.5 %	+/- 0.5 %	+/- 0.5 %	+/- 0.5 %
	width	+/- 0.5 mm	+/- 0.5 mm	+/- 0.5 mm	+/- 0.5 mm
	thickness	+/- 0.1 mm	+/- 0.1 mm	+/- 0.1 mm	+/- 0.1 mm

Applications

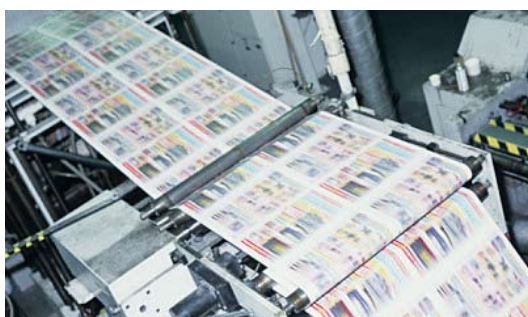
Typ 5005 + 5065

light power transmission, conveying applications, i.e. ticket and money dispensing machines, textile and grinding machines...



Typ 525 HF

high-speed applications, i.e. spindle drives used in textile, wood and metal processing machines...



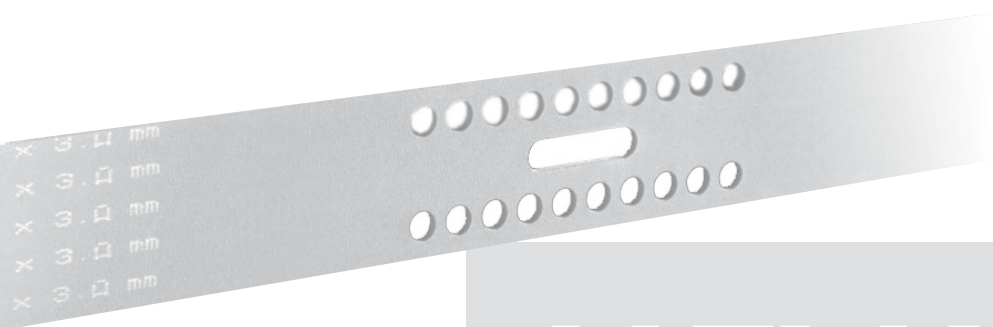
Typ 525

medium power transmission and conveying applications, i.e. wood and metal processing machines, paper and textile machines...

Typ 535

heavy power transmission and conveying applications, i.e. wood and tool processing machines, textile and air ventilation machines...





HEVALOID®

HEVALOID® – Feeder belts

Type ECT 06 / ECG 06 red, white or maroon

These endless woven belts are used in high-performance feeders for paper, cardboard or plastic applied in machines of Bobst, Jagenberg, Tanabe etc.

Friction and vacuum feeders, both are using the excellent quality of our endless belts.

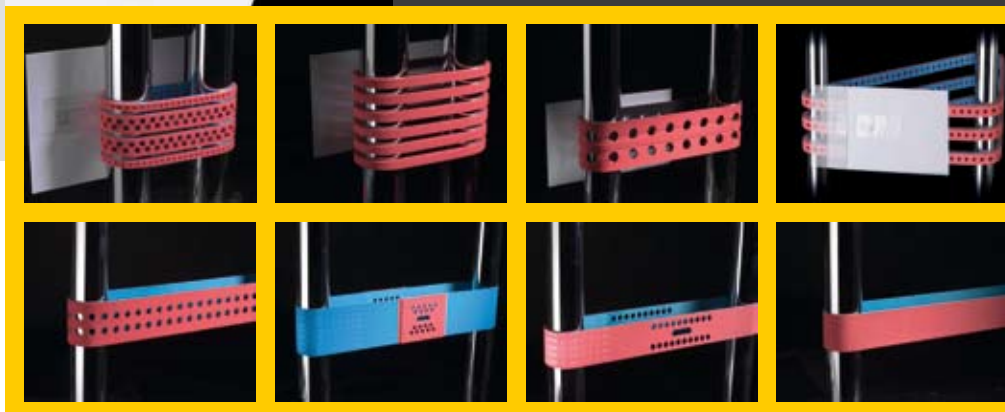
To increase friction performance, we drill, grind and mill any desired structure.



Postal feeder belts - Type ECT 06 / ECG 06 special

These endless woven feeder belts are specially designed for high performance letter sorting and conveying plants.

With exceptionally high running times, these belts are used worldwide in machines i.e. from Böwe Bell+Howell, Bosch, Kern, NEC, Pitney Bowes, Siemens.



ECT 06 / ECG 06 special



Feeder and conveyor belts endless woven

Type	ECT 06 red, white or maroon non-elastic pulley side gliding	ECG 06 red, white or maroon non-elastic pulley side rubberized
Tensile member	Polyester, endless woven	
Quality of rubber/ Property	NR red – 40 ShA – wear-resistant, highest friction NR white – 40 ShA – FDA conform, highest friction NR maroon – 50 ShA – highly wear-resistant, high friction endless vulcanized – no splice or seam	
Temperature resistance	60 °C	60 °C
Pre-tension	0.5 - 1.0 %	
Dimensions:	Tolerances	
Length	150 - 499 mm 500 - 9000 mm	+/- 1 % +/- 0.5 %
Width	3 - 140 mm up to length of 499 mm 3 - 280 mm longer than 500 mm	+/- 1 mm
Thickness	2 - 12 mm up to length of 1999 mm 3 - 8 mm longer than 2000 mm	+/- 0.1 mm

Total thickness mm	Min. pulley-Ø mm
2	20
3	20
4	30
5	30
6	40
7	40
8	45
9	50
10	50
11	60
12	60



Application: Cardbox folding and glueing



ECT 06 / ECG 06

Roller covers
EC red



EC-Belts

EC-Belts – Elastic feeder belts and friction covers

The truly endless – no splice or seam – production results in very reliable, highly flexible and perfectly running belts.

Feeder belts elastic –

Type EC red or white / EC maroon

These elastic endless flat belts perform well due to their constant high friction coefficient and their excellent resistance to abrasion. They are perfectly developed for any kind of paper feeding and conveying applications.

The EC red or white 40 ShA are recommended for thin foils and paper. The EC maroon 50 ShA are used to convey hard and coarse cardboard.

The quality of our natural rubber quality (NR) has certain advantages compared to LINATEX.

Feeder belts semi-elastic –

Type CR/EC red, white or maroon

This endless two-layer belt performs well due to the excellent friction coefficient, the wear resistant surface (NR) and the antistatic, smooth running side.

The CR/EC red or white 40 ShA are recommended for highest friction and the CR/EC maroon 50 ShA for hard and coarse cardboards.

The surface in white is FDA conform.

Roller / friction covers

Endless cured roller and friction covers convince due to their precise and homogenous surface, exceptional high running time and easy-fitting (no glue needed due to sleeve technology).

Böwe, Neopost, Pitney Bowes, etc. are taking the advantage of our reliable and most durable friction covers i.e. in their high performance inserters, folders, feeders and franking machines.



Friction covers
EC red / Silicone white





Type EC – conveyor-belts elastic/semi-elastic

Type	EC red, white*	EC maroon	CR/EC red, white* or maroon semi-elastic
	elastic	elastic	
Quality of rubber	NR 40 ShA	NR 50 ShA	running side CR black cover NR red, white or maroon
Properties	wear-resistant * FDA conform	highly wear- resistant	dto.
Temperature resistance	60 °C	60 °C	60 °C
endless vulcanized – no splice or seam			

Force- and tension values

at 5%	0.09 N/mm ²	0.14 N/mm ²	0.5 N/mm ²
at 10%	0.16 N/mm ²	0.25 N/mm ²	-
at 20%	0.28 N/mm ²	0.43 N/mm ²	-
Pre-tension	10 - 20 %	10 - 20 %	4 - 6 %

Dimensions:

Length	15 - 2000 mm	Tolerances	
Width	3 - 280 mm	+/- 1 %	
Thickness	0.8 - 15.0 mm	+/- 1 mm	
		+/- 0.1 mm	

Other dimensions on request

L0 = length without tension / manufacturing length



Feeder belts elastic
Type EC red or maroon



Feeder belts semi-elastic
Type CR/EC red or maroon



To increase friction performance we drill, grind and mill any desired structure.

Total thickness mm	Min. pulley-Ø mm
2	30
3	30
4	40
5	40
6	50
7	50
8	55
9	60
10	60
11	70
12	70



CRELAST®



CRELAST® – Elastic flat belts

CRELAST® - Flat belts are elastic – no tensile member – and cured according to our unique truly endless process.

With the various rubber qualities at our disposal, we design belts exactly according to your requirements i.e. light power transmission and conveying applications, digital printing units, food conveying, etc.

CR black



XNBR light beige



EC - Natural rubber belts

Silicone black



EPDM green



CRELAST® – Elastic folding and conveying belts

Type	CR black	NBR white	NBR blue/l'grey	XNBR light beige	EPDM green	SI black
Quality of rubber	Chloroprene 70 ShA	Nitrile 65 ShA	Nitrile 75 ShA	Nitrile 75 ShA	EP 65 ShA	Silicone 80 ShA
Properties	antistatic oil/grease resistant	FDA	oil/grease resistant	very high resistance to abrasion	UV-, light- and ozone- proof	non-stick
Temperature resistance	100 °C	80 °C	80 °C	100 °C	120 °C	160 °C
	endless vulcanized – no splice or seam					
Force-/tension values						
at 4%	0.42 N/mm²	0.33 N/mm²	0.56 N/mm²	0.28 N/mm²	0.20 N/mm²	0.34 N/mm²
at 5%	0.49 N/mm²	0.39 N/mm²	0.65 N/mm²	0.34 N/mm²	0.24 N/mm²	0.40 N/mm²
at 6%	0.56 N/mm²	0.44 N/mm²	0.74 N/mm²	0.38 N/mm²	0.28 N/mm²	0.46 N/mm²
Pre-tension	standard elongation L1 = L0 + 4-6 %					
Dimensions		Tolerances				
Length	15 - 2000 mm	+/- 1 %	L0 = length without tension / manufacturing length			
Width	2 - 280 mm	+/- 1 mm				
Thickness	0.5 - 15 mm	+/- 0.1 mm				
Other dimensions on request						

NBR blue/light grey,
NBR white (FDA)





Coating

Coating endless

One of our specialties is the endless coating - no splice or seam - of flat, timing and poly-V-belts. These belts perform well due to their precise and homogenous surface, exceptionally high running time and interruption-free use.

Additionally, the endless coated belts guarantee users of caterpillar units for tube and wire

extrusion plants reliable, abrasion resistant and long term running belts.

With the various rubber qualities at our disposal, we design the belts exactly according to your requirements.

Coating materials

Type	CR black	NBR white	NBR blue/ light grey	XNBR l'beige	EPDM green	SI l'grey	NR red, white*/ maroon
Quality of rubber	Chloroprene 70 ShA	Nitrile 65 ShA	Nitrile 75 ShA	Nitrile 75 ShA	EP 65 ShA	Silicone 40 ShA	Natural 40/50 ShA
Properties	antistatic oil/grease resistant	FDA wear- resistant	wear and oil/grease resistant	highly wear- resistant	UV-, light- and ozone- proof	non-stick FDA	excellent coefficient of friction, *FDA
Temperature resistance	100 °C	80 °C	80 °C	100 °C	120 °C	150 °C	60 °C

Available dimensions:

Length 150 – 9000 mm
Width max. 280 mm
Thickness 1 – 8/12 mm

Timing- and Poly-V-belts supply

Usually we receive from our customer timing- and poly-V-belts in sleeves of minimum 200 mm width. The coated sleeves will be cut by us to the requested belt width.



Processing

Processing: drilling, grinding, marking...

Your belts will be finished according to your requirements:

Perforations / bores / millings

Many folder/gluer machines, as well as VFFS units, use the support of vacuum energy to increase speed of machine and life time of the belts. According to your request, we perforate and mill your belts.

cylindrical



conical



oval



lateral



diagonal



Milling alongside, lateral or diagonal

Many paper and cardboard handling machines have increased working speed. For this higher performance, higher friction coefficients of the feeder belts are needed. Milling of tracking or lateral grooves will improve it.

Lateral grooves do not only increase friction coefficient, furthermore they reduce dirt and paper dust on the surface.

Therefore, your machines are running with higher efficiency and interruption-free!

Grooves can be:

lateral



diagonal



alongside



Self-tracking-guide

Self-tracking guides keep your belts on track, i.e. if you have lateral forces against the belt. We weld self-tracking guides onto the belt or mill them direct out of the belt material.

Self-tracking guides



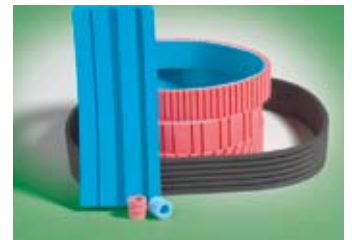
Structure of the surface

Depending on your application and the used rubber quality we recommend various grindings or vulcanized web structures.

Marking of the belts

For many customers marking with Ink-Jet or screen printing is very important.

We would be glad to mark and print your belts with the date, belt type, spare part number, dimensions, etc.



Millings



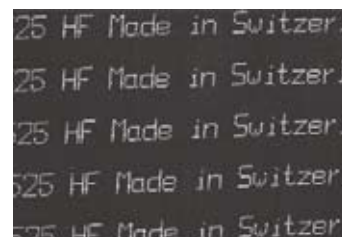
Perforations



Self-tracking guides



Structure of the surface



Marking



To increase friction performance, we drill, grind and mill any desired structure.



HEVALOID® – Tube winder belts endless

HEVALOID® - Tube winder belts consist of an endless woven polyester carcass coated with synthetic rubber.

The production of truly endless belts – no splice or seam – results in very length-stable, highly

flexible and high performing belts.

The black chloroprene rubber is antistatic and very resistant to abrasion.

The blue nitrile rubber is also very resistant to abrasion and is specially designed for non-marking applications.

The HEVALOID® - quality guarantees a precise tube winding, a reliable consistent feed and extremely high running time.

Tube winder belt black



Type	535 TW	565 TW	585 TW	595 TW
Thickness	2.5 – 2.8 mm	4.0 – 4.5 mm	6.0 – 6.5 mm	8.0 – 9.0 mm
Mandrel-diameter	20 – 60 mm	50 – 120 mm	from 70 mm	from 120 mm
Minimal-Ø of tube	30 mm (20 mm if belt speed is less than 5 m/sec.)	60 mm (50 mm if belt speed is less than 5 m/sec.)	80 mm (70 mm if belt speed is less than 5 m/sec.)	130 mm (120 mm if belt speed is less than 5 m/sec.)
Thickness of cardboard tube	2 – 4 mm	2 – 8 mm	ab 4 mm	ab 6 mm
Tensile member	Polyester, endless woven			
Quality of rubber	Chloroprene 85 ShA			
Temperature resistance	80 °C			
Tensile strength, endless	3000 N/cm	4000 N/cm	> 4000 N/cm	> 4000 N/cm* > 6000 N/cm
Tensile elongation	8 – 9 %			
Force for 1% elongation 2% elongation	350 N/cm 700 N/cm	400 N/cm 800 N/cm	450 N/cm 900 N/cm	600 N/cm 1100 N/cm
Coefficient of friction μ	0.7 – 0.8			
Dimensions				
Length	1400 – 9000 mm	1400 – 9000 mm	1800 – 9000 mm	*1800 – 2999 mm 3000 – 9000 mm
Tolerance	+/- 0.5 %	+/- 0.5 %	+/- 0.5 %	+/- 0.5 %
Width	20 – 280 mm	20 – 280 mm	20 – 280 mm	20 – 280 mm
Applications	Tubes of sanitary and domestic papers, industrial tubes, etc.	Tubes for cardboard cans, textile tubes, industrial tubes, etc.	Tubes for carpet rolls, washing agent drums, heavy industrial tubes, etc.	Tubes for very heavy industrial tubes, heavy carpet rolls, etc.



Tube winder belt blue

Type	538 TW	568 TW	598 TW
Thickness	3.0 mm	5.5 mm	8.0 mm
Mandrel-Diameter	20 – 60 mm	50 – 120 mm	> 100 mm
Min. Ø of tube	20 mm	50 mm	100 mm
Thickness of cardboard tube	2 – 4 mm	2 – 8 mm	> 6 mm
Tensile member	Polyester, endless woven		
Quality of rubber	NBR blue 75 ShA – non-staining		
Temperature resistance	80 °C		
Tensile strength, endless	3000 N/cm	4000 N/cm	> 4000 N/cm* > 6000 N/cm
Force for 1% elongation 2% elongation	350 N/cm 700 N/cm	400 N/cm 800 N/cm	600 N/cm 1100 N/cm
Coefficient of friction μ	0.7		
Dimensions			
Length	1400 – 9000 mm	1400 – 9000 mm	*1800 – 2999 mm 3000 – 9000 mm
Tolerance	+/- 0.5 %	+/- 0.5 %	+/- 0.5 %
Width	20 – 280 mm	20 – 280 mm	20 – 280 mm
Other dimensions on request			
Applications	Tubes for sanitary and domestic papers, industrial tubes, etc.	Tubes for cardboard cans, textile tubes, industrial tubes, etc.	Tubes for carpet rolls, washing agent drums, heavy and very heavy industrial tubes, etc.



HEVALOID®

HEVALOID® – Wire puller belts, endless

These endless woven puller belts are used in various caterpillar units of extrusion plants, i.e. production of cables, wires, tubes, hoses, etc.

The production of truly endless belts – no splice or seam – results in very length-stable, highly flexible and high performing belts.

According to the desired pull out force and resistance to abrasion, we use softer or harder rubber qualities. Additionally we coat timing belts and Poly-V-belts for these applications.



Wire puller belts endless

Qualities of rubber	CR black	85 ShA
	NBR blue	75 ShA
	NR maroon	50 ShA

Other qualities of rubber on request

Tensile member	Polyester, endless woven
----------------	--------------------------

Grooves in any shape you need



Temperature resistance	depending on the type of belt - up to 100 °C
------------------------	--

Dimensions

Length	1400 – 9000 mm
Tolerance	+/- 0.5 %
Width	20 – 280 mm
Thickness	max. 12 mm





LP/LL

SOLUTUS®

SOLUTUS® – Flat belts made of leather and fleece

SOLUTUS® - Flat belts consist of endlessly wound polyester yarns on a basis of leather, fleece or multiply carcass.

These truly endless belts have been used for years in oily machine drives as well as for conveying applications, i.e. cardboard or metal sheets.

Specially designed belts with endlessly wound steel cords are applied for very length-stable transmission belts, i.e. for small power stations and newspaper printing plants.

Types

- LP: running side leather / cover PU
- LL: running side leather / cover leather
- VP: running side fleece / cover PU
- VV: running side fleece / cover fleece
- LP 63 S: running side leather / cover PU / tensile member steel cord

Dimensions:

Length 700 – 7000 mm
Width 5 – 200 mm

Type	Force for 1% elongation N/cm	Thickness mm	Specific- weight g/m ²
LP 06 E	80	1.9 - 2.1	2000
LP 09 E	180	2.2 - 2.4	2200
LP 15 E	270	2.5 - 2.7	2600
LL 06 E	80	2.9 - 3.1	2900
LL 09 E	180	3.3 - 3.5	3100
LL 15 E	270	3.7 - 3.9	3500
VP 06 E	80	1.2 - 1.3	1000
VP 09 E	180	1.4 - 1.5	1200
VP 15 E	270	1.7 - 1.8	1500
VV 06 E	80	2.4 - 2.6	1600
VV 09 E	180	2.6 - 2.8	1900
LP 63 S	2400	2.5 - 2.8	5000



LP 63 S



VP / VV

Power transmission SOLUTUS®			
	Type 06	Type 09	Type 15
m/s	kW/cm	kW/cm	kW/cm
1	0.10	0.15	0.20
2	0.20	0.28	0.45
3	0.28	0.40	0.62
4	0.37	0.52	0.90
5	0.44	0.67	1.11
6	0.55	0.82	1.26
7	0.63	0.96	1.48
8	0.68	1.11	1.63
9	0.78	1.26	1.85
10	0.89	1.33	2.07
12	1.11	1.63	2.45
14	1.24	1.85	2.95
16	1.33	2.05	3.30
18	1.55	2.30	3.55
20	1.78	2.75	4.15
25	2.20	3.30	5.10
30	2.75	3.80	6.30
Pre-tension: 1 %			



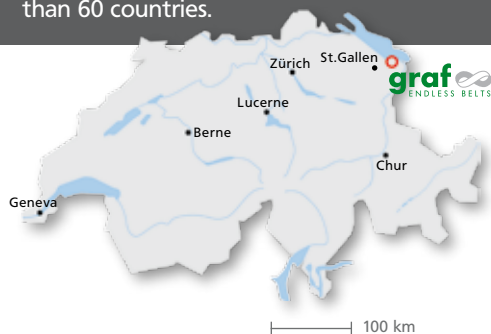
HEVALOID® CRELAST® SOLUTUS®
Endless... no splice or seam



The company was founded in 1939 and changed into a limited company in 1978.

Under our registered brand names **HEVALOID® – CRELAST® – SOLUTUS®** we produce and supply truly endless power transmission belts and precise conveyor tapes.

For decades the excellent quality and reliability have been convincing our customers (OEM, agent, end-user) in more than 60 countries.



Dipl. Ing. Werner Graf AG
Buechenstrasse 9
CH-9422 Staad / Switzerland
phone +41 (0) 71 / 855 13 13
fax +41 (0) 71 / 855 13 16
www.grafbelts.ch
info@grafbelts.ch