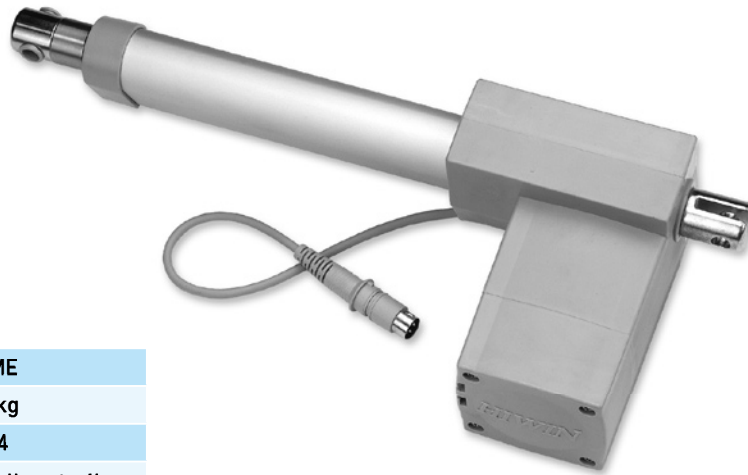


5.

HIWIN LAM Series (2)

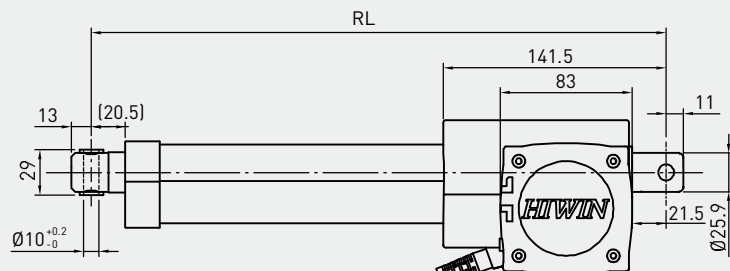
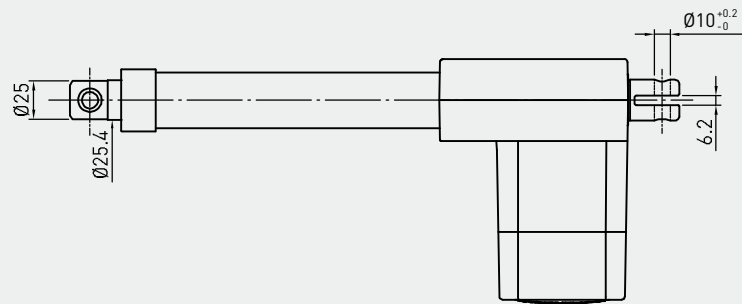
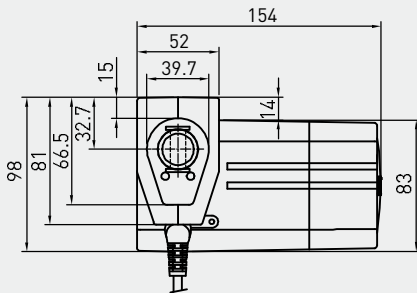
LAM3



Screw type	ACME
Weight*	2.95kg
Protection	IP54
Compatible controller	Compatible with all controllers (*Notice the type of connector: Audio/DIN 4pin)
Working temp.	+5°C~40°C

- * Stroke length 200mm
- * Option: (1) IP66
- (2) Safety Nut (RL=S+183, S≤300/RL=S+233, S>300)
- (3) Back fixture turned 90°

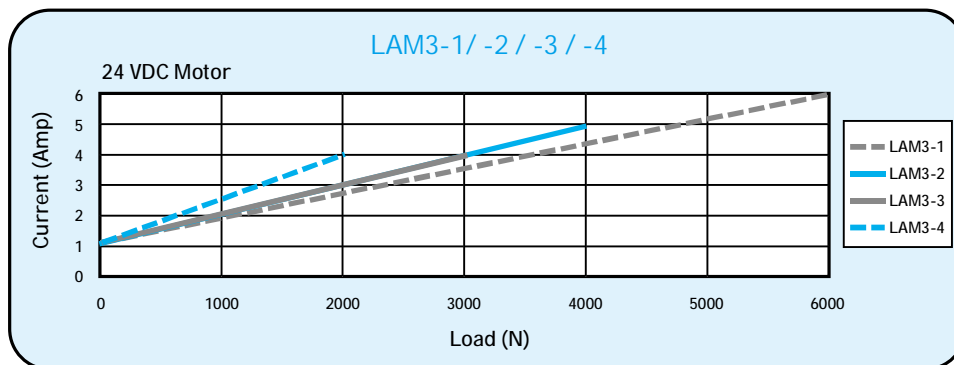
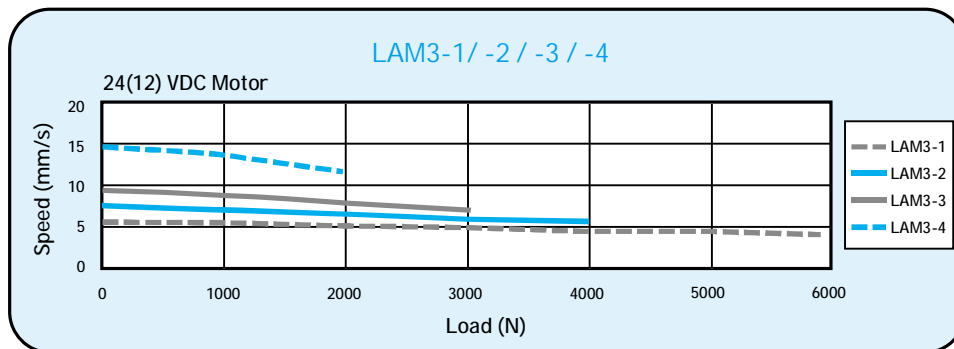
- RL=S+171
Stroke≤300
- RL=S+221
Stroke>300
- RL:Retracted length
- S:Stroke length



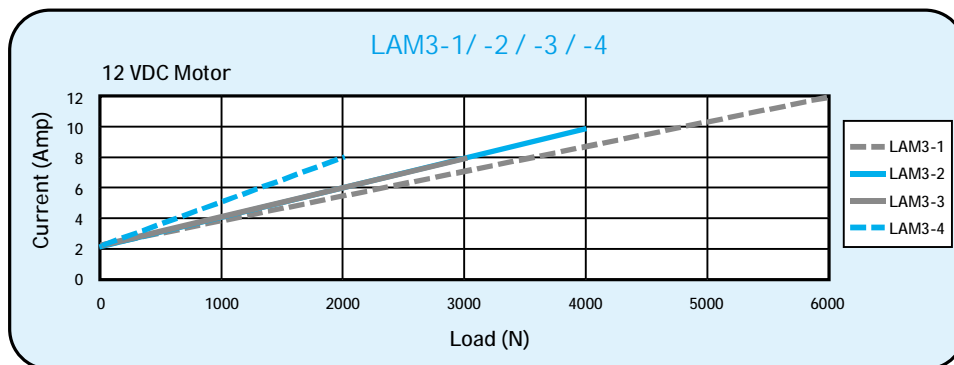
MOTOR CABLE
LENGTH=200mm
DIAMETER=Ø5.5

• LAM3 Specifications

Model	Thrust max. (N)	Pulling max. (N)	Holding max. (N)	Speed (mm/s)		Standard stroke (mm) : S							Duty cycle %	Current max. (A)	
				Load=Max./Load=0		100	150	200	250	300	350	400		24VDC	12VDC
LAM3-1	6000	5000	5000	4	5.5	100	150	200	250	300	350	400	10	6	12
LAM3-2	4000	4000	4000	5.5	7.5	100	150	200	250	300	350	400	10	5	10
LAM3-3	3000	3000	3000	7	9	100	150	200	250	300	350	400	10	4	8
LAM3-4	2000	2000	1500	11.5	14.5	100	150	200	250	300	350	400	10	4	8



**Note: The test results are obtained by using the 24VDC power supply.



**Note: The test results are obtained by using the 12VDC power supply.

• Ordering Information

