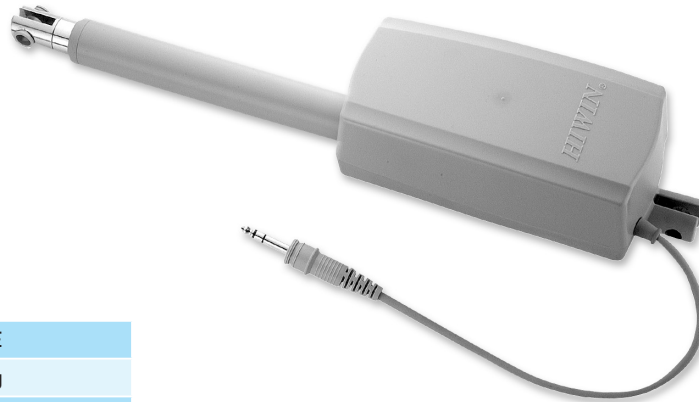


8.

HIWIN LAN Series (4)

LAN4

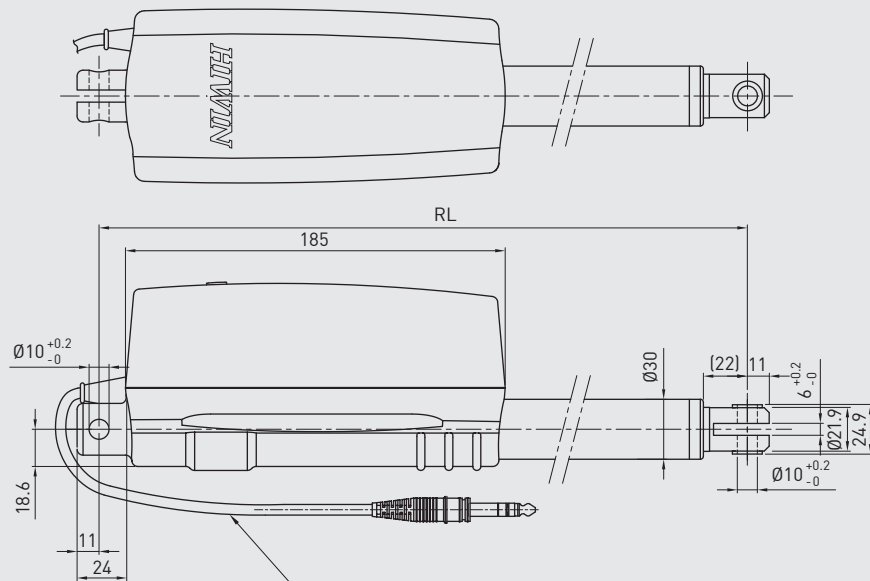
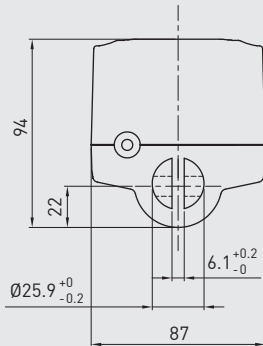


Screw type	ACME
Weight*	2.33kg
Protection	IP54
Compatible controller	LAK2/LAK2LR/LAK2D/LAK2BN LAK2J/LAK4N/LAK6B
Working temp.	+5°C~40°C

* Stroke length 200mm

- * Option: (1) IP66
 (2) Safety Nut RL=S+174
 (3) Mono jack-plug (Standard is stereo)
 (4) Mechanical spline (push only) RL=S+200

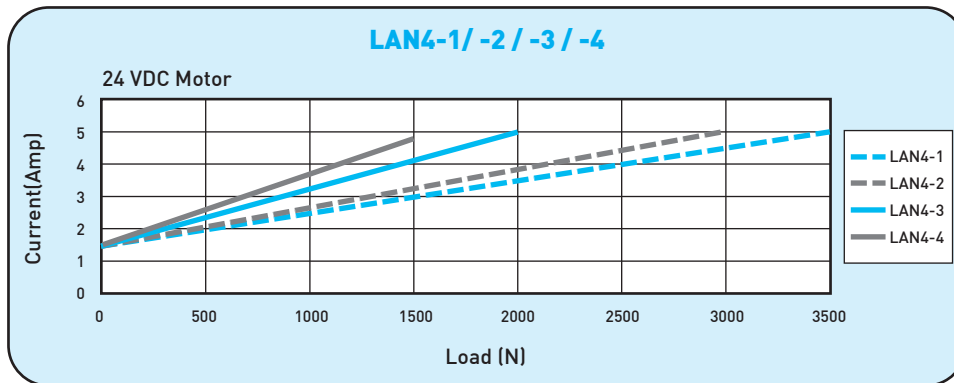
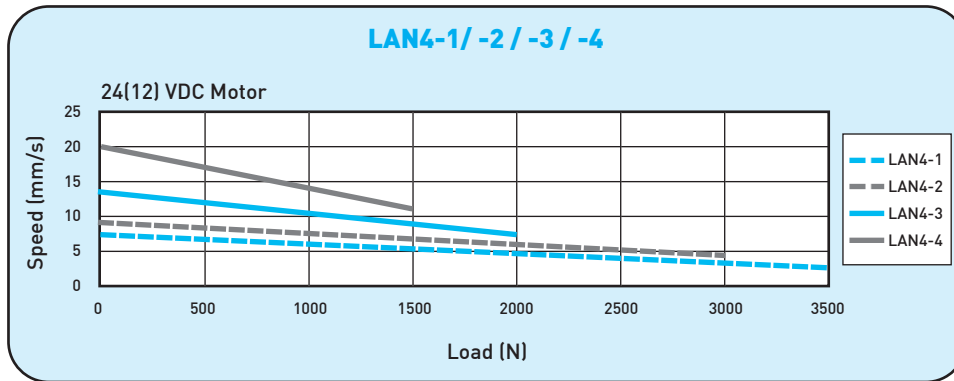
- RL=S+160
Stroke≤400
- RL=S+210
Stroke>400
- RL:Retracted length
S:Stroke length



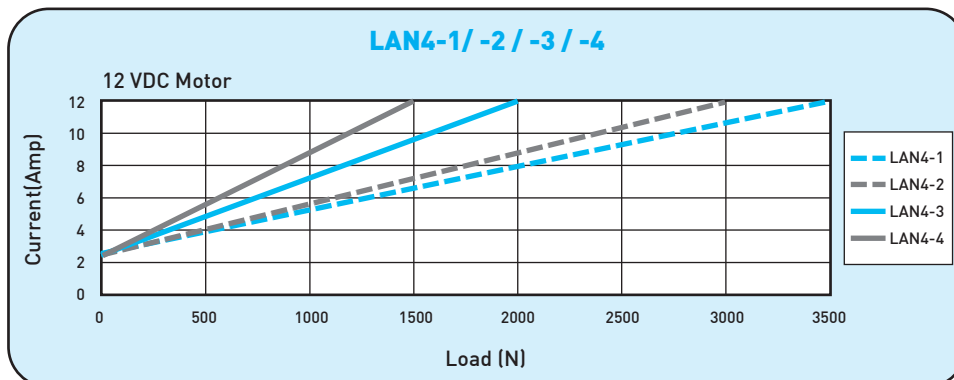
MOTOR CABLE
 MOTOR CABLE LENGTH=1000mm
 MOTOR CABLE DIAMETER=Ø5.5mm

• LAN4 Specifications

Model	Thrust max. (N)	Pulling max. (N)	Holding max. (N)	Speed(mm/s)		Standard stroke (mm) : S							Duty cycle %	Current max. (A)	
				Load=Max./	Load=0	100	150	200	250	300	350	400		24VDC	12VDC
LAN4-1	3500	3500	3500	3.5	7	100	150	200	250	300	350	400	10	5	12
LAN4-2	3000	3000	3000	4.2	9	100	150	200	250	300	350	400	10	5	12
LAN4-3	2000	2000	2000	7	13	100	150	200	250	300	350	400	10	5	12
LAN4-4	1500	1500	1500	11	20	100	150	200	250	300	350	400	10	5	12

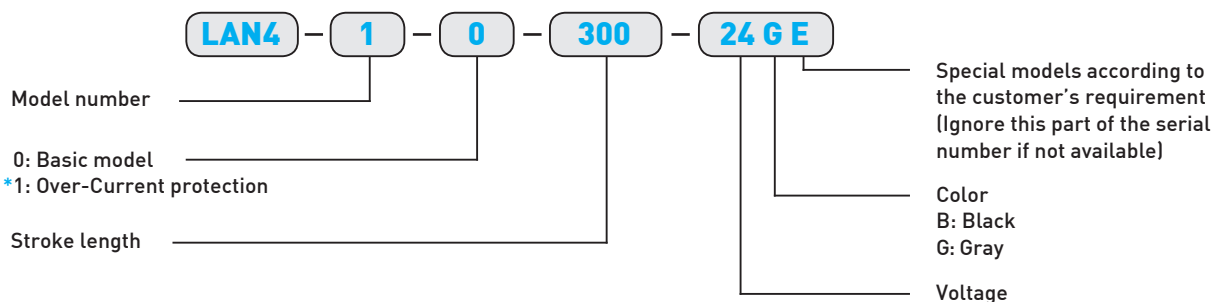


**Note: The test results are obtained by using the 24VDC power supply.



**Note: The test results are obtained by using the 12VDC power supply.

• Ordering Information



*Remark: Completed with internal over-current protection circuitry to ensure that the actuator stops if obstacles or stroke limits are reached.