

7. HIWIN LAS4 Series

LAS4



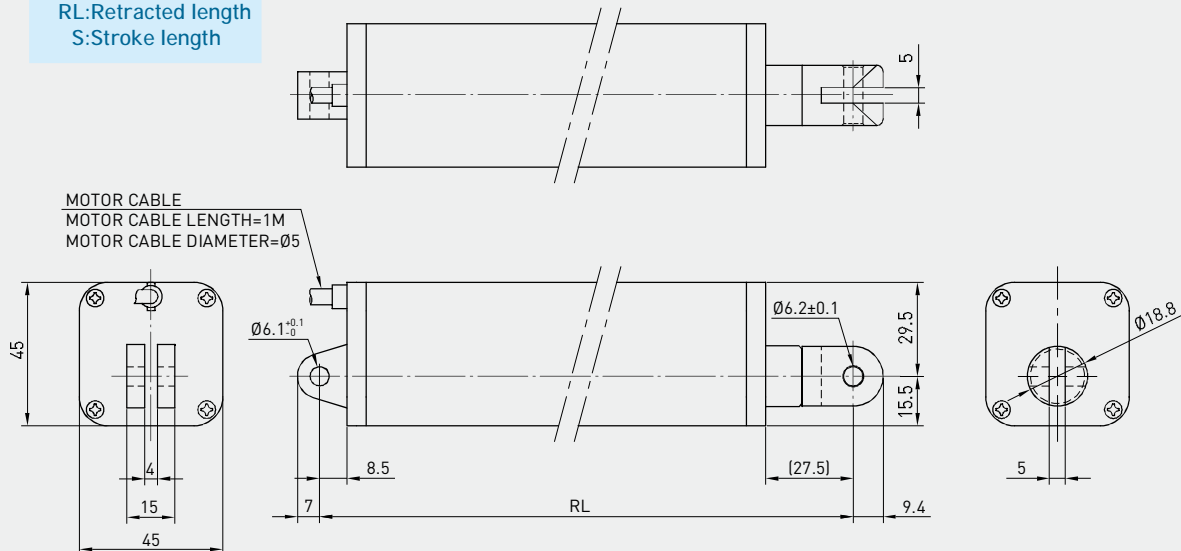
Screw type	ACME	Position feedback specifications (Hall Sensor)			
Weight*	1.36kg	Supply voltage	24VDC	12VDC	5VDC
Protection	IP54	Output	High level 24VDC Low level 0.2V/10mA sink (NPN)	High level 12VDC Low level 0.2V/10mA sink (NPN)	TTL
Compatible controller	Compatible with all controllers (*Notice the type of connector: Audio/DIN 4pin)				
Working temp.	+5°C~40°C				

* Stroke length 200mm

* Option: (1) IP65

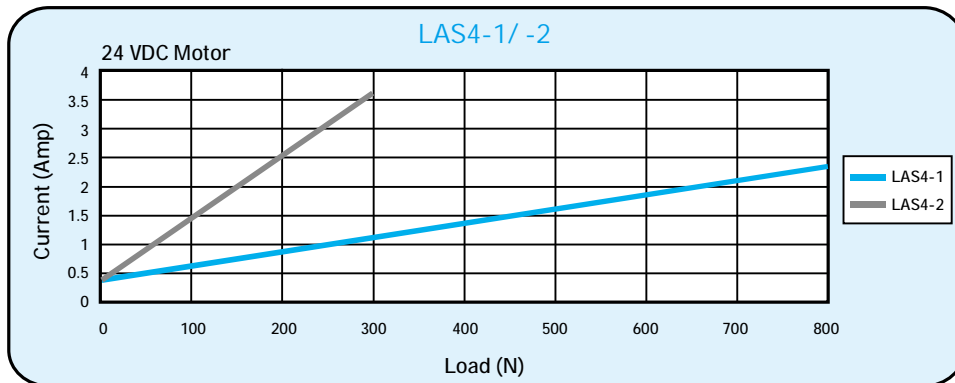
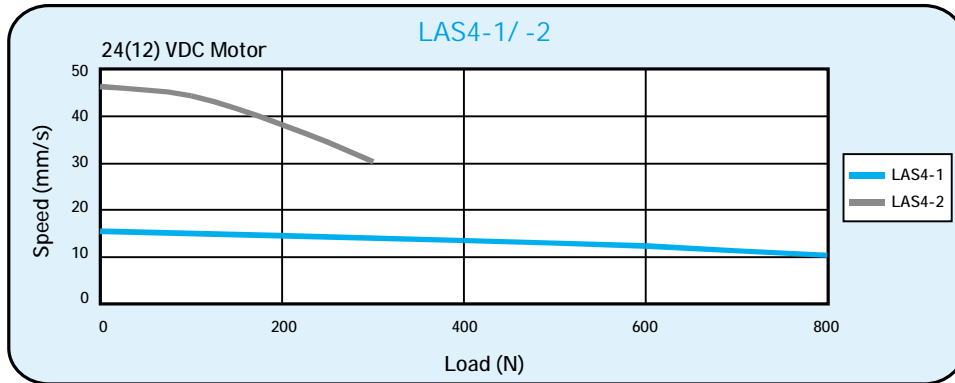
(2) Hall sensor (RL=S+226, S≤300/RL=S+276, S>300)

- RL=S+222.5
Stroke≤300
 - RL=S+272.5
Stroke>300
- RL:Retracted length
S:Stroke length

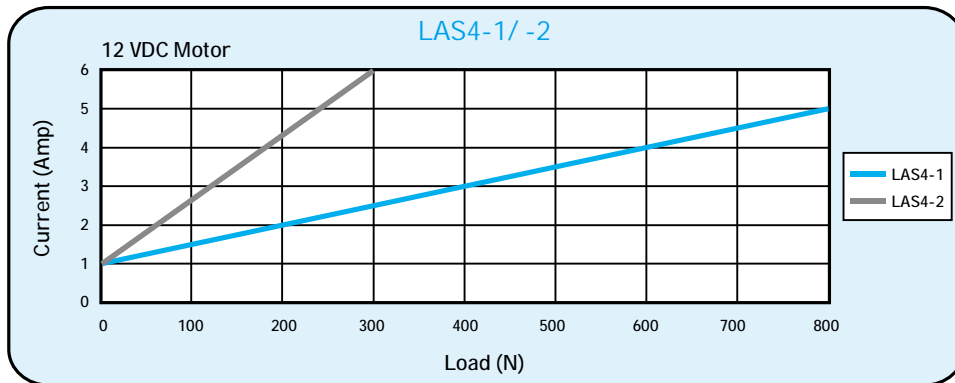


• LAS4 Specifications

Model	Thrust max. (N)	Pulling max. (N)	Holding max. (N)	Speed (mm/s)		Standard stroke (mm) : S					Duty cycle %	Current max. (A)		Hall Sensor Resolution (mm/pulse)
				Load=Max./Load=0		100	150	200	250	300		12VDC	24VDC	
LAS4-1	800	800	600	10	15	100	150	200	250	300	10	5	2.3	0.0085
LAS4-2	300	300	200	30	46	100	150	200	250	300	10	6	3.6	0.02



**Note: The test results are obtained by using the 24VDC power supply.



**Note: The test results are obtained by using the 12VDC power supply.

• Ordering Information

