

TELESCOPIC STEEL COVERS

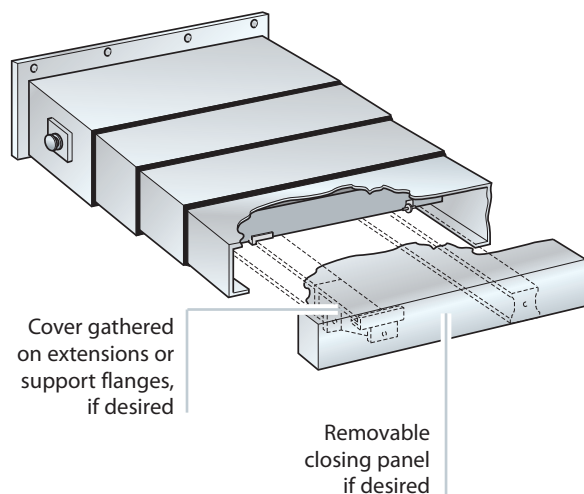
Standard products

There are many companies throughout the world who manufacture or sell **Telescopic Steel Covers**. Our company has achieved production levels - in terms of volume and quality standards - that place it at the top of the market.

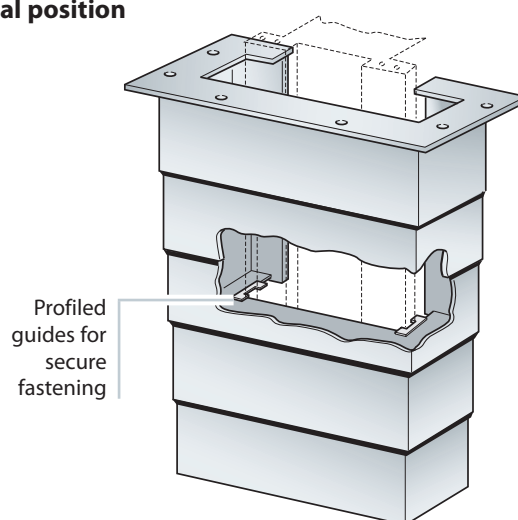
Heavy investment in machinery and personnel training, under the guidance of highly qualified engineers have allowed us to face the latest challenge in the development of Machine Tools: the use of high speed linear motors and the increase of the axis speeds.

The quality of design and manufacture, often with patented shock absorbers, allow us to solve problems resulting from high speeds. At the same time, our company gives utmost consideration to the quality/price ratio, insuring that our customers get the most from their investment.

Horizontal position

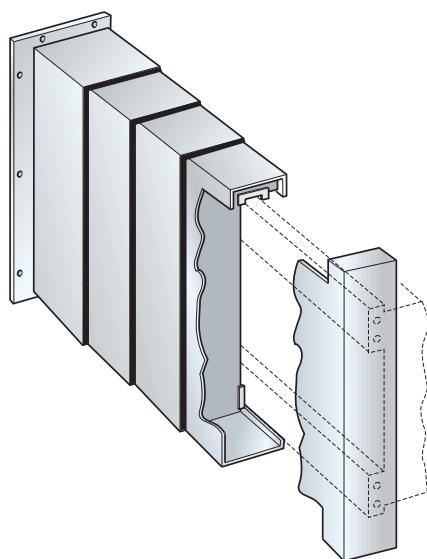


Vertical position

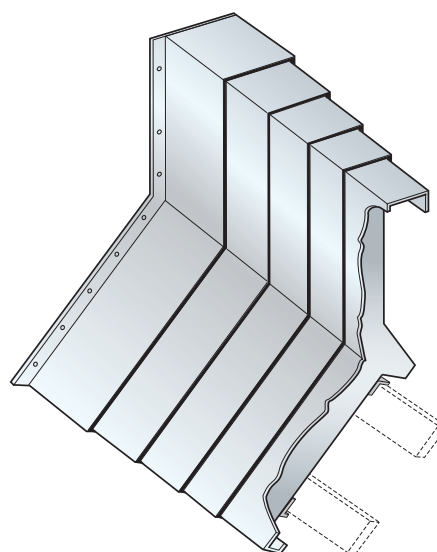


Snap-on guides available upon request for rapid frontal installation

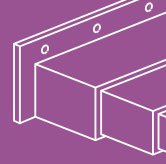
Transverse position



Transverse LATHE cover



Reproduction of this page is strictly prohibited.



Telescopic Steel Covers are not simple products to manufacture. They require high-quality materials and components, as well as sophisticated manufacturing technologies.

High movement speeds call for continuous innovation.

For heavy covers:

a) over 110 kg
for horizontal covers

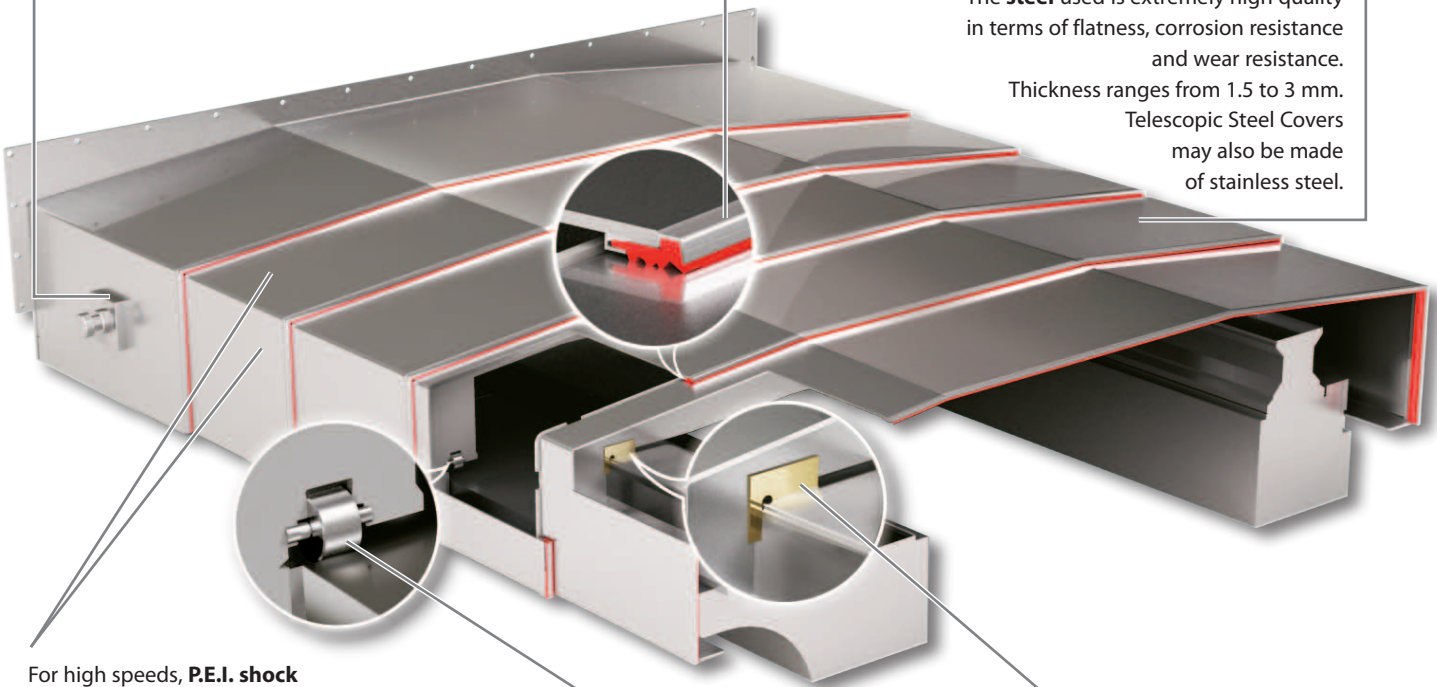
b) over 70 kg
for front or vertical covers.

Special **supports** are included for easy, secure lifting.

Wipers keep the surface clean and prevent chips and shavings from getting onto expensive rails. They must be heat and coolant resistant, and thus are made of polyurethane, with or without a protective stainless steel chip guard.

Special anti-friction **brass guides** or **wipers** with polyurethane rubber are inserted on the sides of the Telescopic Steel Covers, at the discretion of the engineer based on speed, seal and dimensions.

The **steel** used is extremely high quality in terms of flatness, corrosion resistance and wear resistance. Thickness ranges from 1.5 to 3 mm. Telescopic Steel Covers may also be made of stainless steel.



For high speeds, **P.E.I. shock absorbers** (patented) are inserted in these positions.

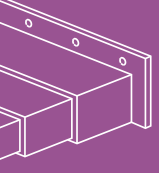
They are very effective in reducing impact between boxes during movement.

These shock absorbers allow working speeds considerably higher than those previously possible, while simultaneously reducing noise levels and wear.

This innovation, together with precision production methods, make it possible to accommodate even the fastest machine tools.

For high speeds or weights, special **bearings** are inserted for smooth, silent movement. Telescopic Steel Covers with bearings require tempered or auxiliary guides.

Compact, low-speed Telescopic Steel Covers are equipped with special anti-friction brass or non-metallic **guides**.

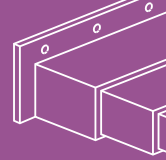


DAMPER-SHELL

The new generation viscoelastic shock absorber that effectively reduces impact noise in large scale telescopic covers

- **DAMPER-SHELL** is ideal for working speeds up to 80m/min and acceleration up to 1g.
- **DAMPER-SHELL** opens smoothly during expansion without causing friction on the boxes.
- **DAMPER-SHELL** is free from boost residue whether the telescopic cover is closed or in resting position.
- **DAMPER-SHELL** has an excellent dimension/cost ratio.
- **DAMPER-SHELL** is ideal for long strokes being a silent, durable and reliable solution.
- Telescopic covers equipped with **DAMPER-SHELL** require quick and simple maintenance.

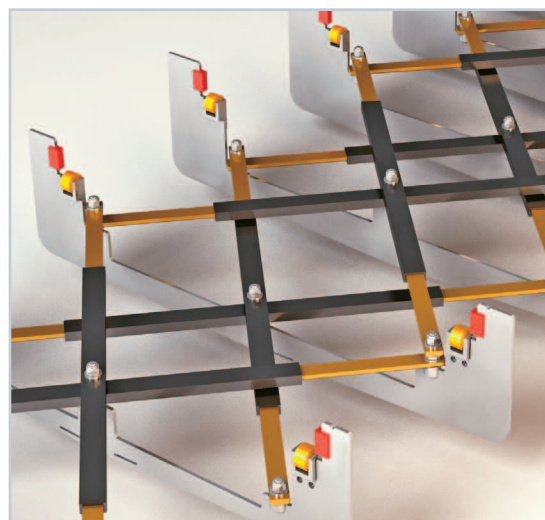
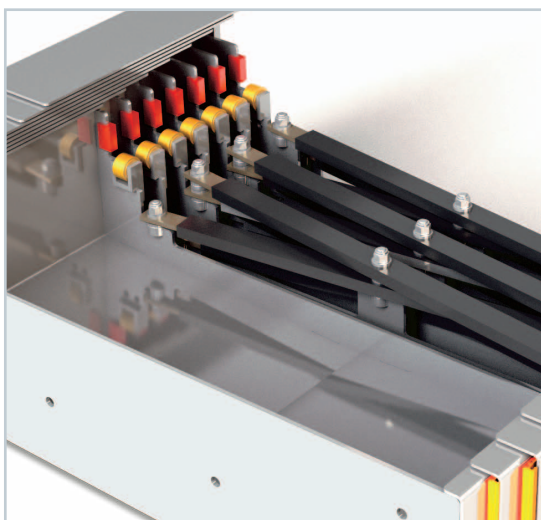


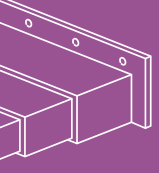


SYNCHRO-TEL

The mechanical brace system that synchronizes movement in telescopic covers

- **SYNCHRO-TEL** is a mechanical system which synchronizes the opening and closure of medium sized telescopic covers.
- **SYNCHRO-TEL** is ideal for working at high speeds and acceleration.
- The shaft mechanism of the **SYNCHRO-TEL** telescopic cover eliminates any collision between the boxes.
- **SYNCHRO-TEL** generates minimum stress on the pivots.
- Guaranteed stability of the telescopic shafts secured by three pivots to the boxes.
- Guaranteed minimum closed length.
- **SYNCHRO-TEL** is a convenient and cost saving solution.
- Mathematical testing and calculations prove **SYNCHRO-TEL** to be the most reliable and durable synchro system on the current market.



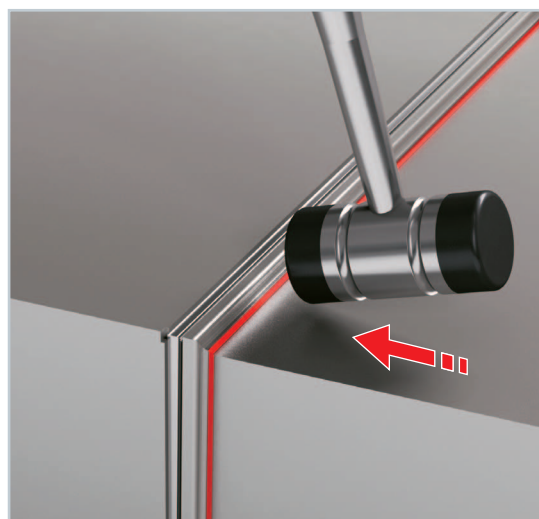
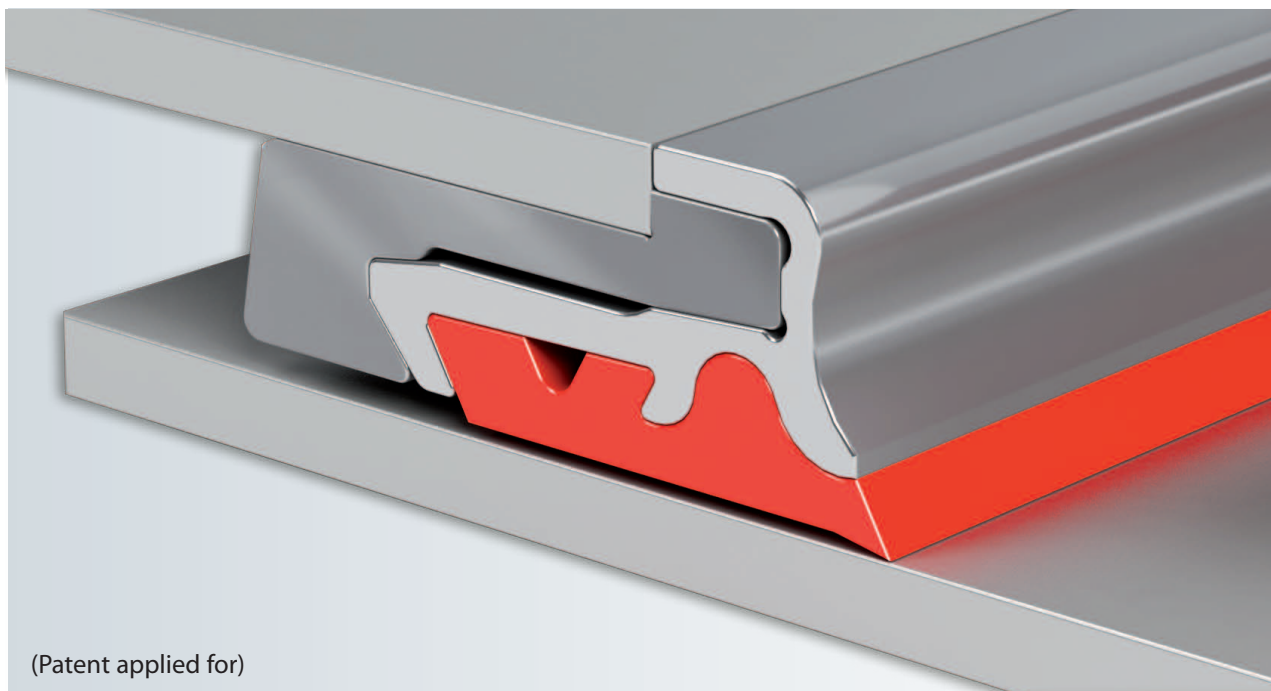


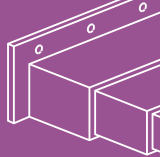
PR4A

The instantly replaceable wiper for Telescopic covers

Attention: disassembly not required!

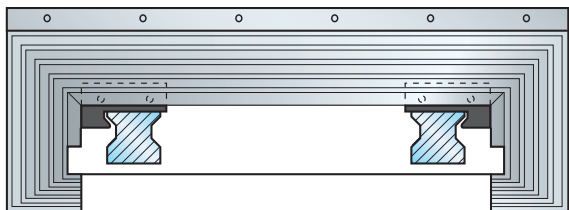
- **WIPER PR4A** is a cutting-edge solution for replacing the wiper profile instantly and without stopping the machinery.
- **WIPER PR4A** is made of 3 independent elements:
 - firstly it has a solid metal profile on the telescopic cover box
 - secondly it has a removable metal profile
 - finally it has a seal designed to clean the cover.
- Telescopic covers equipped with **WIPER PR4A** allow the client to independently replace the wiper profile:
 - Release the removable part
 - Replace the removable metal profile ready-made for the new seal
 - **WIPER PR4A** offers a range of seals with different technical features depending on the working conditions it is subjected (e.g. a working environment that uses coolants or a dry working environment in the **PR4A D** version).



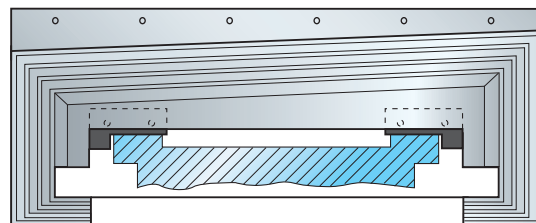


Configurations

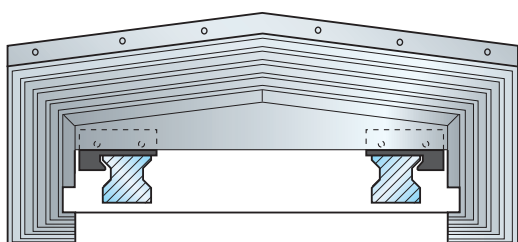
Shape 1



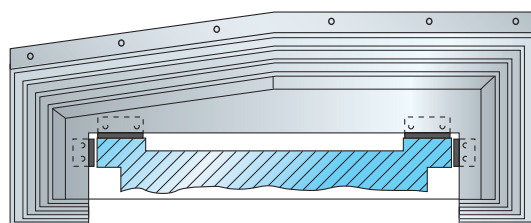
Shape 2



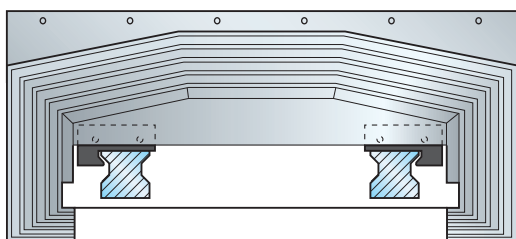
Shape 3



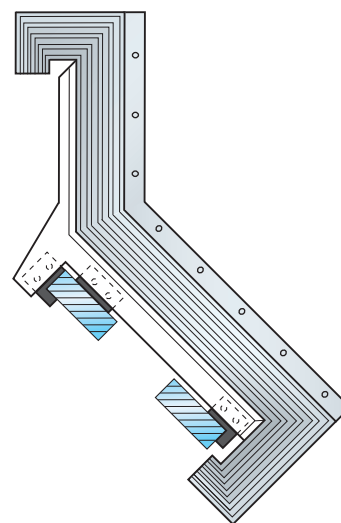
Shape 4



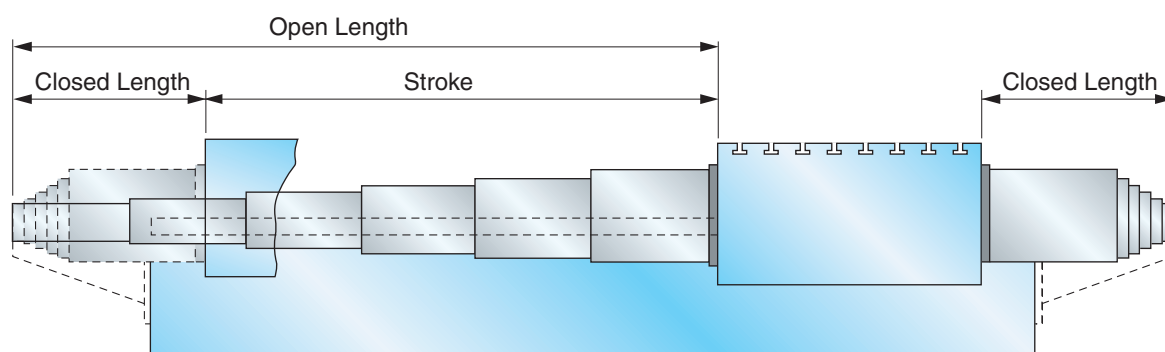
Shape 5

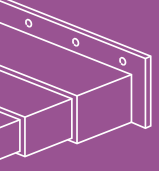


Shape 6



NOTE: Only a few standard configurations of Telescopic Steel Covers are shown above.





TELESCOPIC STEEL COVERS

Standard products

Telescopic Steel Covers Questionnaire

! Type of machine:

Trade mark:

Model: Axis:

Cover code: Canister qt.

Acceleration: m/sec² Speed: m/min

Working ☐ Horizontal ☐ Vertical

Position ☐ Crosspiece ☐ Inclined

Sliding ☐ by skids ☐ by rollers

Treadability ☐ Yes ☐ No

Coolant ☐ Yes ☐ No

! Customer:.....

Street:.....no.

TownLand

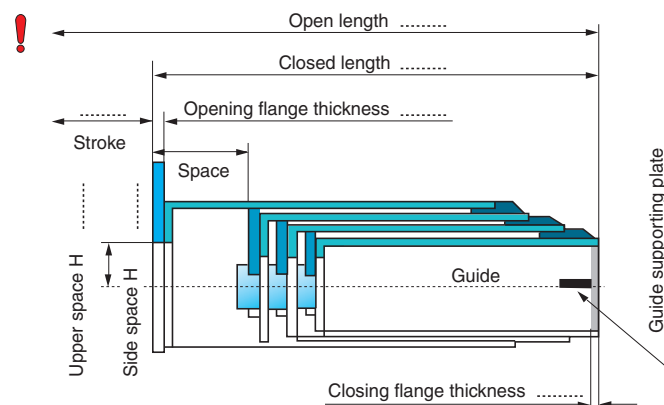
Reference person:

Phone:

Fax:.....

E-mail:.....

Required quantity Pcs:..... Right:..... Left:.....

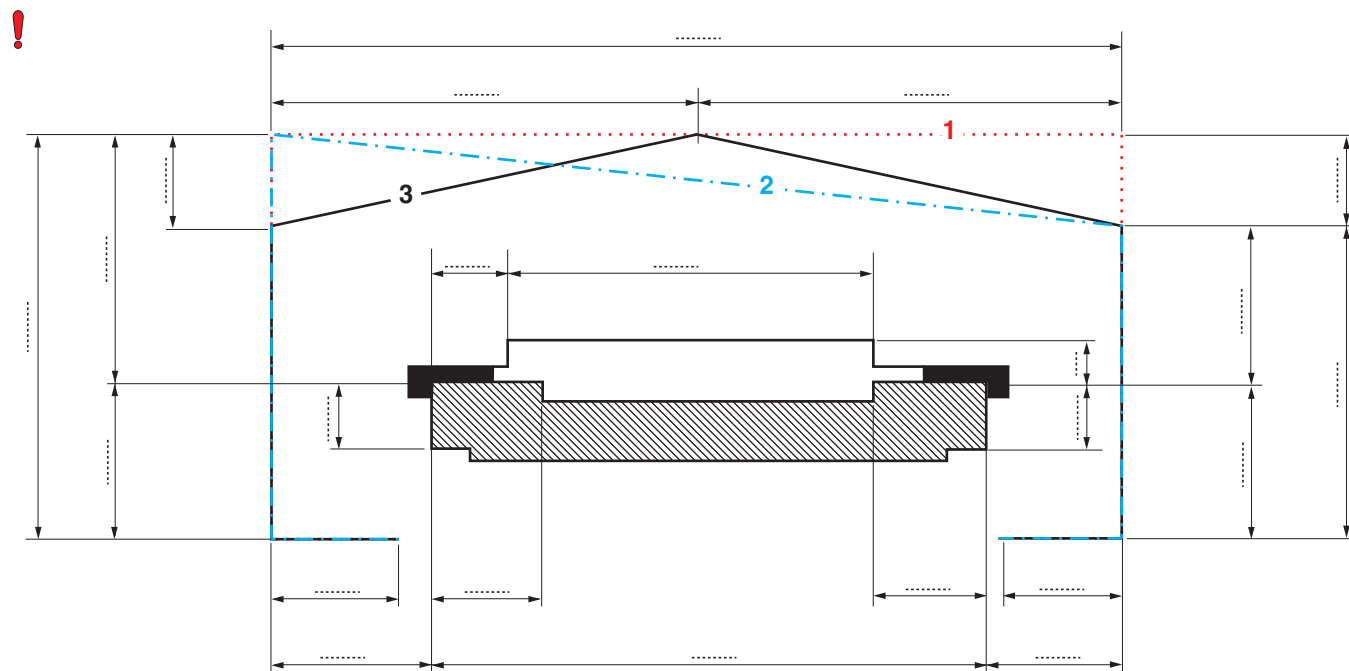


! Please indicate the Cover overall, fastenings excluded.

Desired shape: 1... ☐ 2... ☐ 3... ☐

View from the opening flange ☐

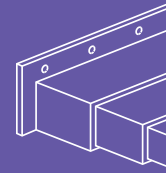
View from the closing flange ☐



! Opening Flange sketch

! Closing Flange sketch

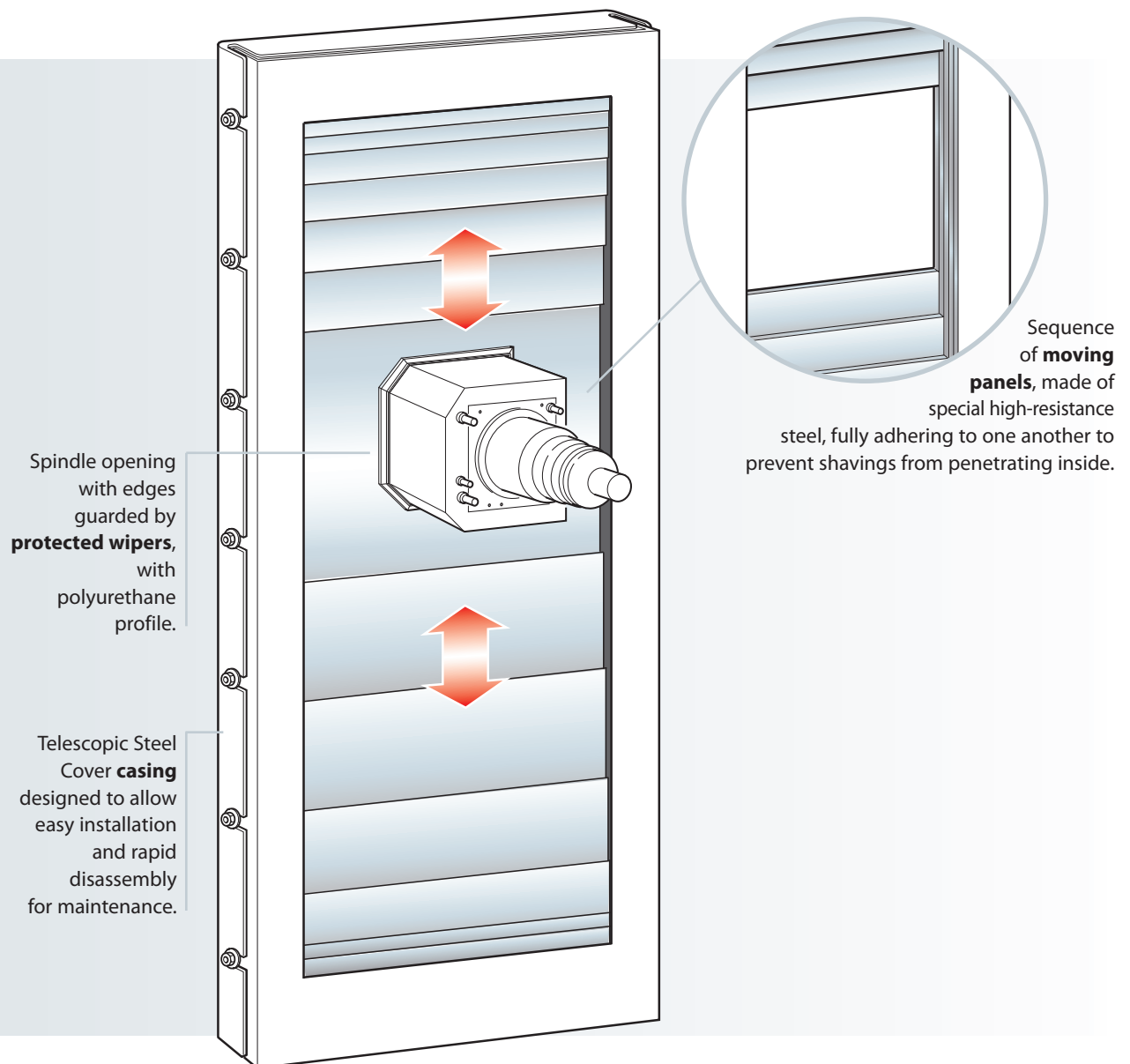
NOTE: The data fields and/or tables marked by ! are the least ones to be filled in order to give you a quotation.



SHEET-POCKET™

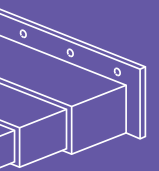
The **SHEET-POCKET™** Telescopic Steel Cover is the most effective solution for shielding the Y-axis (vertical) in horizontal machining centers. **It can achieve speeds up to 150 m/min. and accelerations of 2 g.** It is supplied in a fully enclosed frame that is independent from the machine structure. The self-contained sheet-pocket is easy to install and remove for maintenance or inspection.

The dimensions are defined by our technicians together with the customer's engineers to maximize the working area.



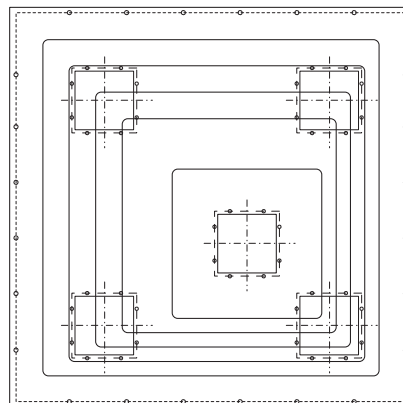
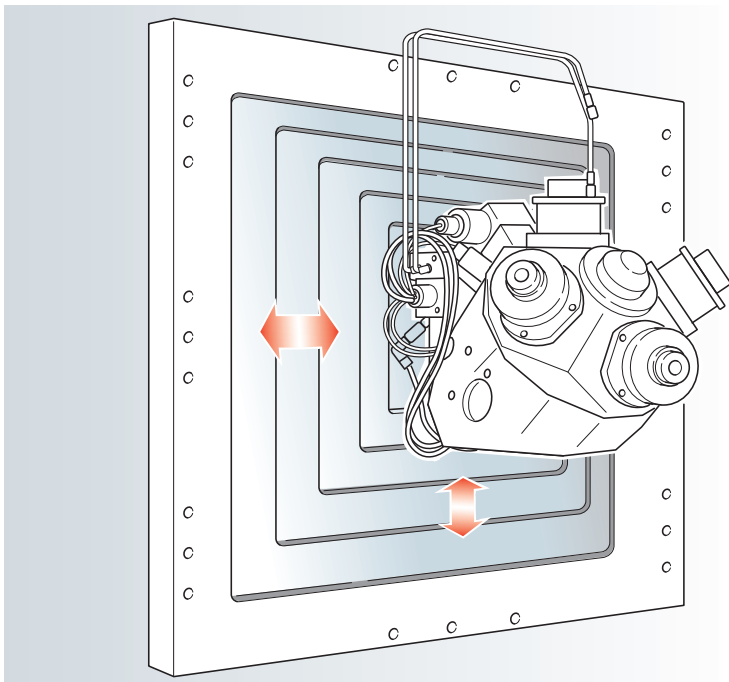
The **SHEET-POCKET™** Telescopic Steel Cover can be easily combined with **SURE-SPRING®** roll-up covers as shown on page 16 of this catalog.

(Patented)



SQUARE SLIDING COVER™

This family of **Telescopic Steel Cover**, was designed to meet special needs that frequently arise on SPECIAL or TRANSFER machines and small machining centers. This configuration is especially innovative thanks to the patent-pending method for moving each individual panel, thus allowing users to take greater advantage of the available space.



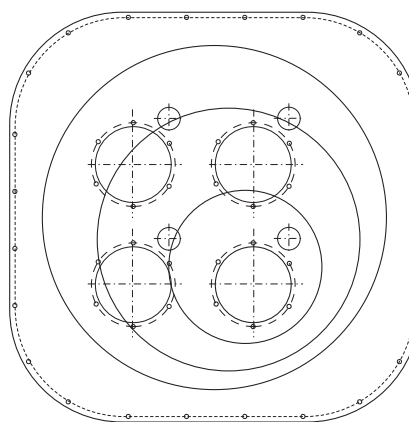
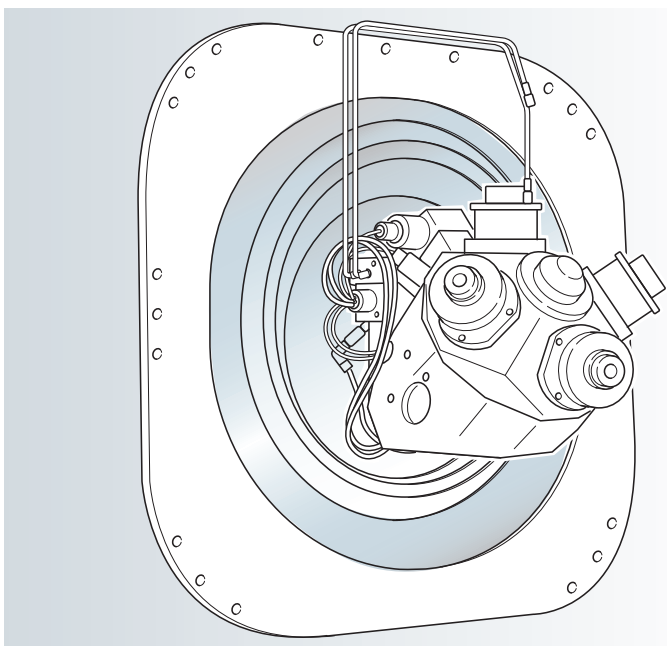
- For dual-axis operation
- High speed
- Compact size
- Easy to install
- Maximum use of available space

(Patented)

ROUND SLIDING COVER™

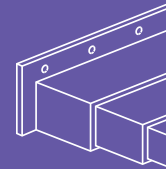
Like the **SQUARE SLIDING COVER**, this type of **Telescopic Steel Cover** was designed to meet special needs that frequently arise on SPECIAL or TRANSFER machines and small machining centers.

Since it has a wide range of applications, contact our Engineering Department to define the ideal sizing for the cover.



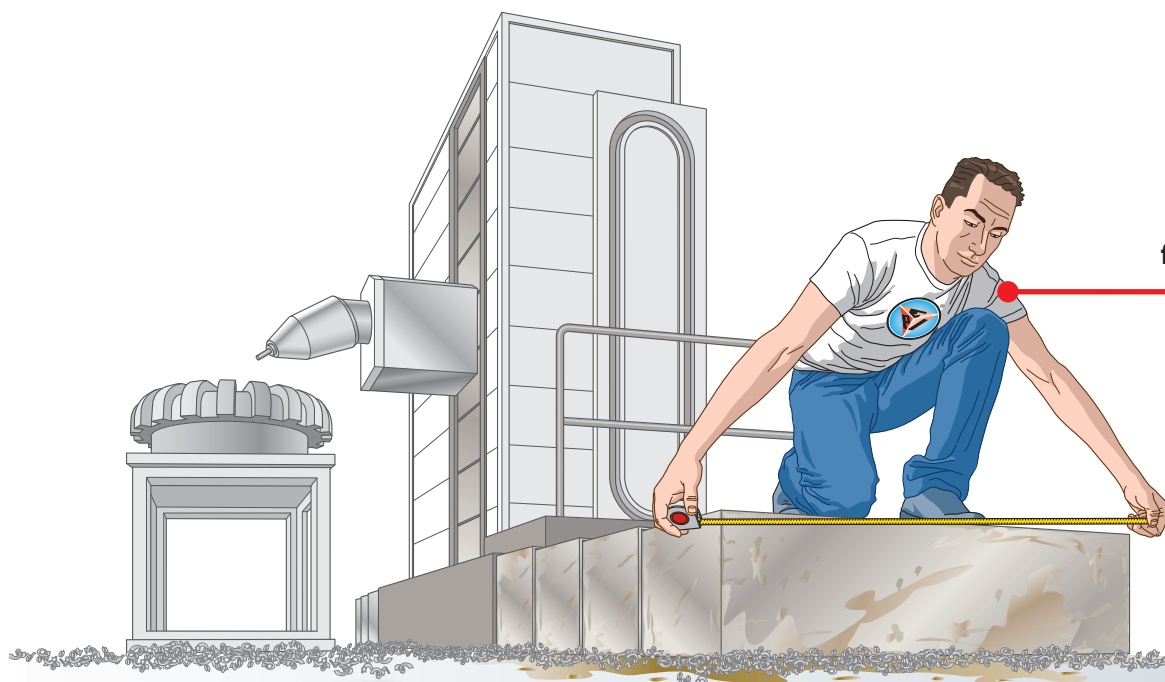
- For dual-axis operation
- High speed
- Compact size
- Easy to install

(Patented)

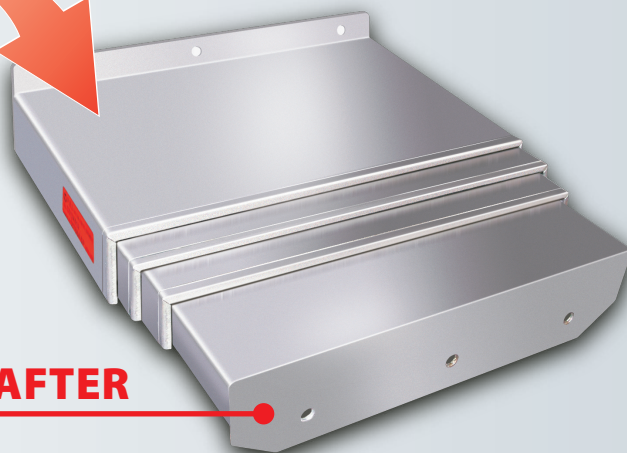


METAL TELESCOPIC COVER REVISION

Inspection of
P.E.I. staff
for field surveys



BEFORE



AFTER

- Overhaul of ALL TYPES of telescopic covers for machine tools
- Revision or replacement of damaged sections
- Replace riders or guide rollers
- Replace brass wear strips
- Clean and buffed to original finish
- In case of too damaged telescopic covers, we can build them new.
- SHORT DELIVERY TIME