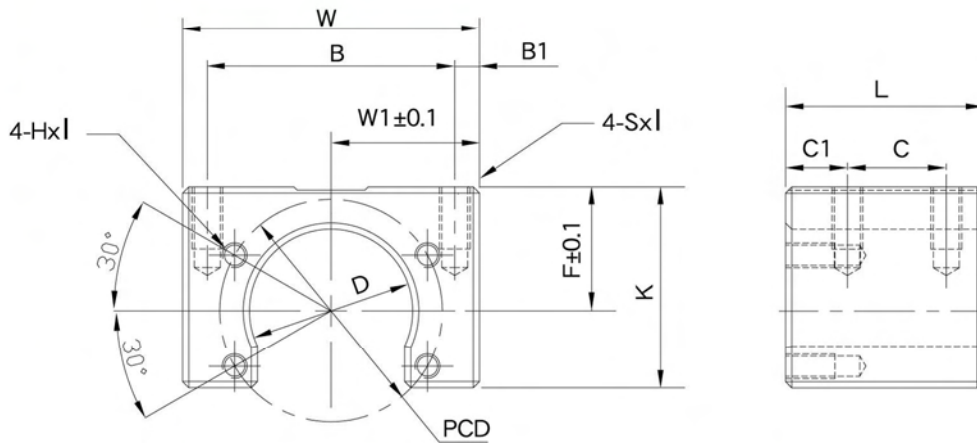


Nut Bracket MC



MC



Unit : mm

Model No.	Width W	W1	B	B1	Overall Length L	C	C1	F	K	D	PCD	SxI	HxI	Far factory automation equipment Supported Ball Screw models	Weight (Kgs)
MC 1004	48	24	40	4	32	16	10	20	32.5	26.4	36	M5×0.7×7	M4×0.7×7	BNK1004 · BNK1005	0.24
MC 1205	60	30	47	6.5	36	24	6	21	37	30.4	40	M6×12	M4×0.7×7	BNK1205	0.38
MC 1408	60	30	50	5	36	20	10	21.5	37	34.4	45	M6×12	M5×0.8×7	BNK1408 · BNK1510 BNK1520 · BNK1616	0.34
MC 2010	86	43	70	8	50	30	10	31	54	46.4	59	M10×20	M6×10	BNK2010	1.04
MC 2020	86	43	70	8	40	24	8	28	51	39.4	59	M10×20	M6×10	BNK2020	0.83

Application table of MC Nut bracket for ballscrew manufacturer.

Model NO.	Ballscrew manufacturer					
	THK	NSK	HIWIN	PMI	COMTOP	GTEN
MC 1004	BNK1004, BNK1005	W1004 FA,	R1004FSW	FSIW1404, FSIC1403 FSIC1404, FSIC1405		FSI1404, FSI1405
MC1205	BNK1205 BNK1205	W1205 FA, W1210 FA	R1205FSW, R1210FSW	FSWW1204, FSWC1204/05 FSWC1210, PTR1205/10/20	XSVR1210	FSC1210
MC 1408	BNK1408, BNK1510 BNK1520, BNK1616	W1405 FA, W1408 FA W1510 FA, W1520 FA W1616 FA, W1632 FA	R1405FSW, R1408FSW FSW1510, R1510DFSH R1520DFSH, R1520FSH, R1632DFSH	FSIC2005/06, FSWC1405 FSWC1510, FSKC1520 PTR1505/10/20	SFI 1610, SFI 2004 SFI 2005 XSVR1510, XSVR1520	FSI1610, FSI2005 FSC1520
MC 2010	BNK2010	W2010 FA, W2020 FA	R2010FSW, R2020FSW	FSWC2010, PTR2010	XSVR2010, XSVR2020	FSC2010
MC 2020	BNK2020		R 2020DFSH			