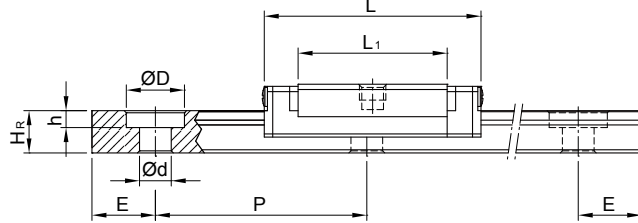
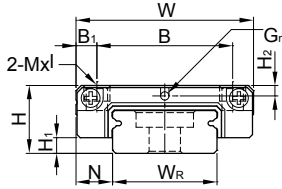


MG Series

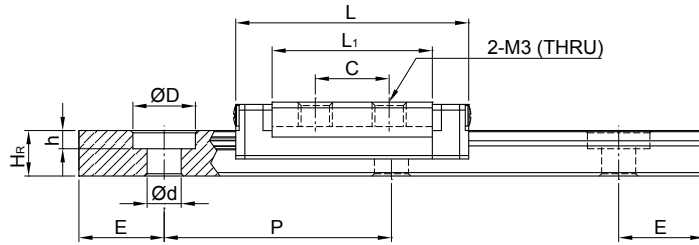
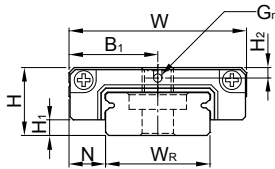
Miniature Type

(4) MGW-C-0 / MGW-H-0

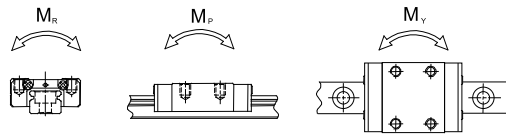
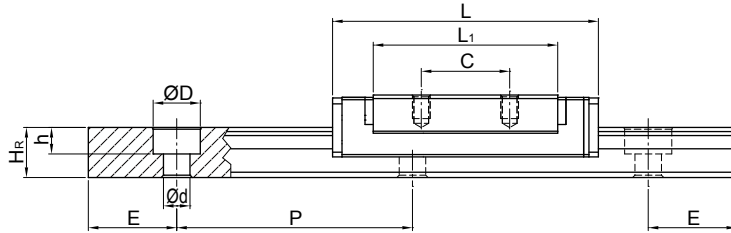
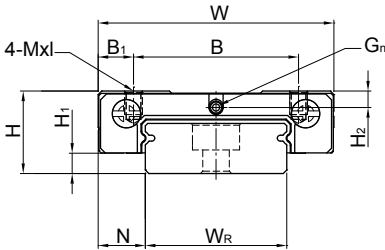
MGW5C-0



MGW5CL-0



MGW9-0, MGW12-0



Model No.	Dimensions of Assembly (mm)			Dimensions of Block (mm)								Dimensions of Rail (mm)					Mounting Bolt for Rail (mm)	Basic Dynamic Load Rating C (kN)	Basic Static Load Rating C ₀ (kN)	Static Rated Moment			Weight					
	H	H ₁	N	W	B	B ₁	C	L ₁	L	G	G _n	Mxl	H ₂	W _R	H _R	D				h	d	P	E	M _R	M _P	M _V	Block	Rail
	N-m	N-m	N-m	kg	kg/m																							
MGW 5C-0	6.5	1.5	3.5	17	13	2	-	14.1	20.5	-	Ø0.8	M2.5x1.5	1	10	4	5.5	1.6	3	20	5	M2.5x7	0.68	1.18	5.5	2.7	2.7	0.016	0.34
MGW 5CL-0					-	8.5	6.5	14.1	20.5			M3-THRU										0.68	1.18	5.5	2.7	2.7	0.016	
MGW 9C-0	12	2.95	6	30	21	4.5	12	27.5	39.7	-	Ø1.2	M3x3	2.65	18	7	6	4.5	3.5	30	10	M3x8	2.75	4.12	40.12	18.96	18.96	0.038	0.91
MGW 9H-0					23	3.5	24	38.5	50.7			M3x3										3.43	5.89	54.54	34.00	34.00	0.053	
MGW 12C-0	14	3.45	8	40	28	6	15	31.3	45.1	-	Ø1.2	M3*3.6	2.8	24	8.5	8	4.5	4.5	40	15	M4x8	3.92	5.59	70.34	27.8	27.8	0.066	1.49
MGW 12H-0					28	6	28	45.6	59.4			M3*3.6										5.1	8.24	102.7	57.37	57.37	0.093	

Note : 1 kgf = 9.81 N