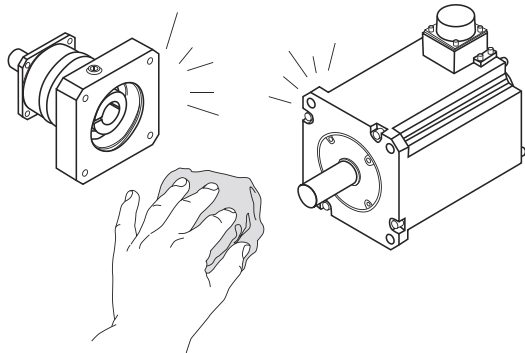
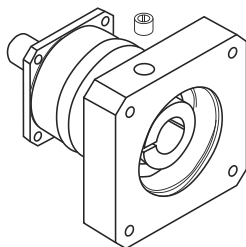


Installation Instructions

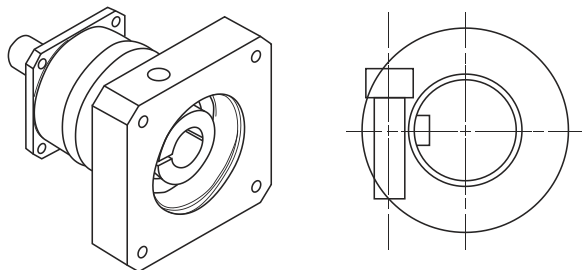
Mounting Procedure to Motor



1. Wipe off anti-rust agent and oil on the motor shaft.

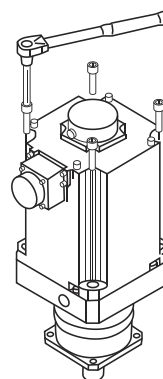


2. Remove the plug.



3. Turn the input shaft until the cap screw is seen. Make sure the cap screw is loosened. Place reducer vertically on the flat surface so the motor mounting part faces up.

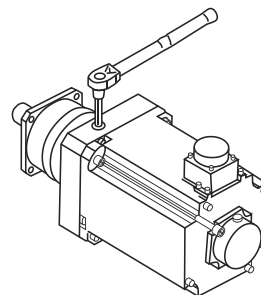
NOTE: In case the bushing has been attached, see reducer drawing example below to fix.



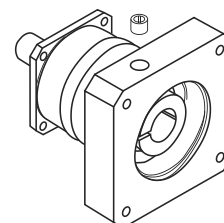
4. Carefully and gently insert the motor shaft into the input shaft. Make sure the motor flange is perfectly fit to the reducer's flange. Tighten the motor by installing and tightening bolts to the proper torque. (See table 1)

Reducer Installation

After confirming the installation surface is flat and clean, tighten the bolt using a torque wrench to the proper torque. (See table 2)



5. Tighten the clamping bolt of the input shaft with torque wrench to the proper torque. (See table 1)



6. Reinstall the plug. The procedure is complete.

Table 1

Bolt Size	Motor Installing Bolts		Clamping Bolts	
	Nm	kgfm	Nm	kgfm
M3	1.1	0.11	1.9	0.18
M4	2.5	0.26	4.3	0.44
M5	5.1	0.52	8.7	0.89
M6	8.7	0.89	15	1.5
M8	21	2.1	36	3.7
M10	42	4.3	71	7.2
M12	72	7.3	125	13
M16	134	14	--	--

Table 2

Bolt Size	Tightening Torque	
	Nm	kgfm
M3	1.9	0.18
M4	4.3	0.44
M5	8.7	0.89
M6	15	1.5
M8	36	3.7
M10	71	7.2
M12	125	13
M16	310	32
M20	603	62

* Recommended bolt: Strength 12.9