

Limit Switch Type 055.000.5 (Mechanical Operation)



Application

This device is used to monitor mechanical movements and end positions. It is a controlling sensor for electronic and mechanical sequences. It also detects axial disengagement movements, e.g. on EAS[®]-clutches.

Function

The pre-tensioned contact is discharged by actuating the switching lever:

Contacts 11 – 14 (21 – 24) open, contacts 11 – 12 (21 – 22) close.

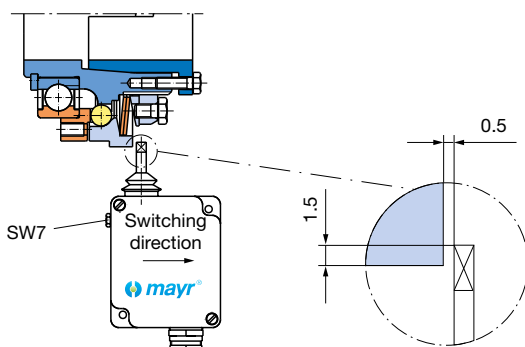
Design

The microswitch is fitted into a light metal housing and is actuated by a switching lever. Operation is only possible in one direction. The limit switch is fixed using two screw-on mounting links attached diagonally with M4 cap screws.

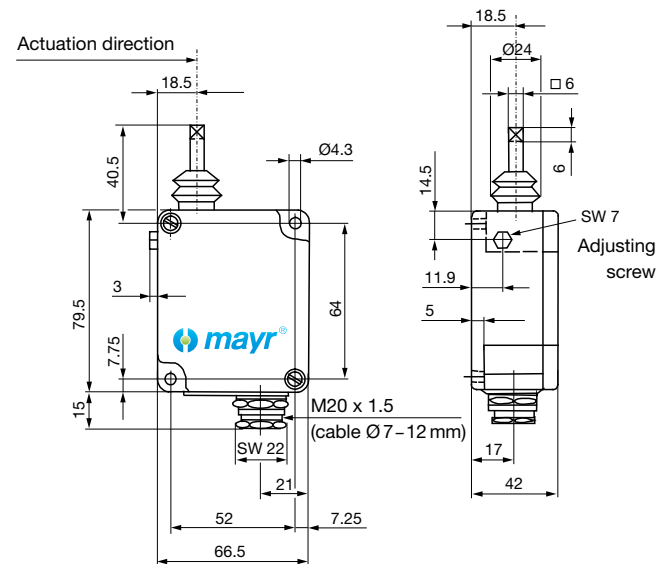
Technical Data

Contact	1 change-over contact (special design: 2 change-over contacts)
Switching power	250 VAC / 15 A (with 2 change-over contacts: 10 A) 24 VDC / 6 A 60 VDC / 1.5 A 250 VDC / 0.2 A min. 12 VDC / 10 mA
Contact material	AgSnO
Switching frequency	Max. 200 switching operations/min
Ambient temperature:	-10 °C up to +85 °C
Protection	IP54
Weight	275 g
Switching travel setting	Using the adjusting screw (SW 7), the zero point can be moved right or left by max. 5 mm
Switching travel	Pretravel: min. 0.15 to 0.5 mm Overtravel: max. 10 mm, depending on the zero point setting
Special types	Different switching lever lengths as well as a design with 2 change-over contacts are possible on request

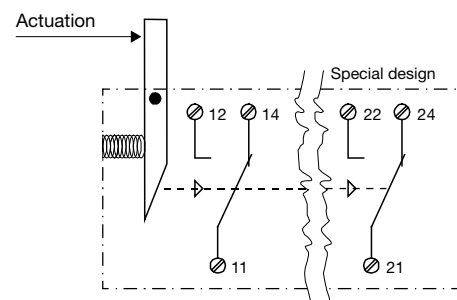
Installation



Dimensions



Electrical Connection



Order Number

0 5 5 . 0 0 0 . 5