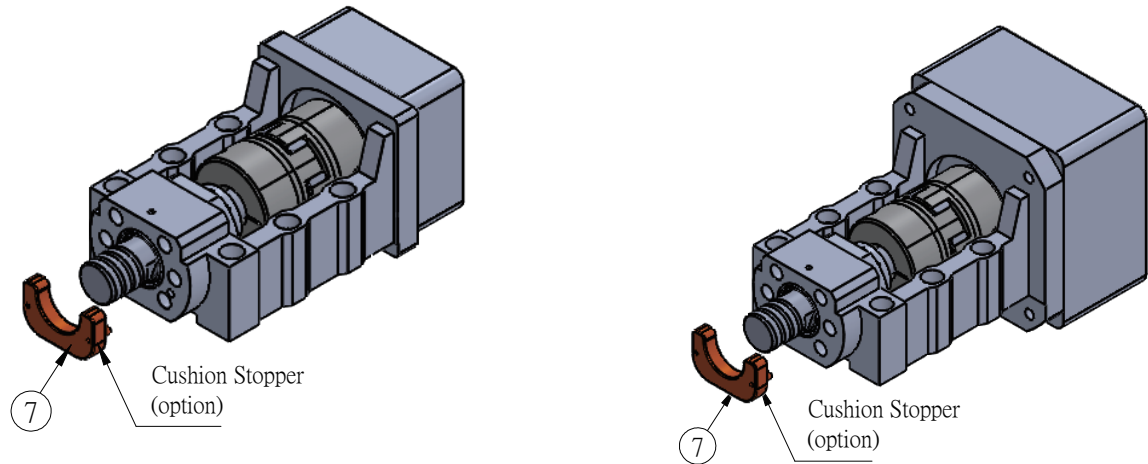
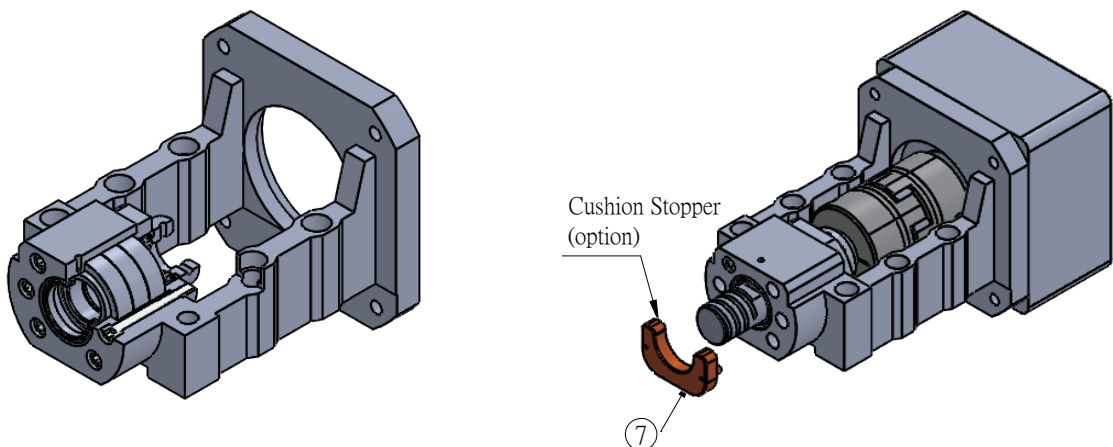


# New Product Information

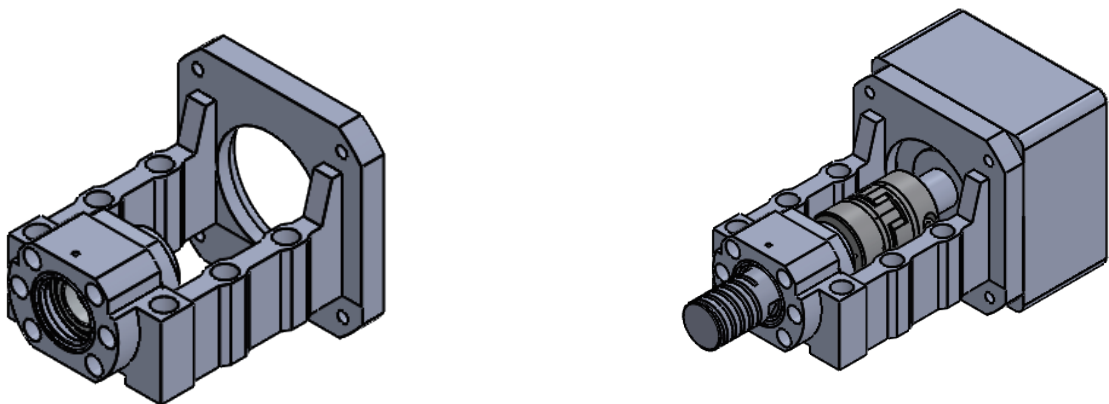
## 一. Motor Bracket MBCS25/30 / MBCF30 (Long Type)-P14



## 二. Motor Bracket MBCK25/30/35/40-P16

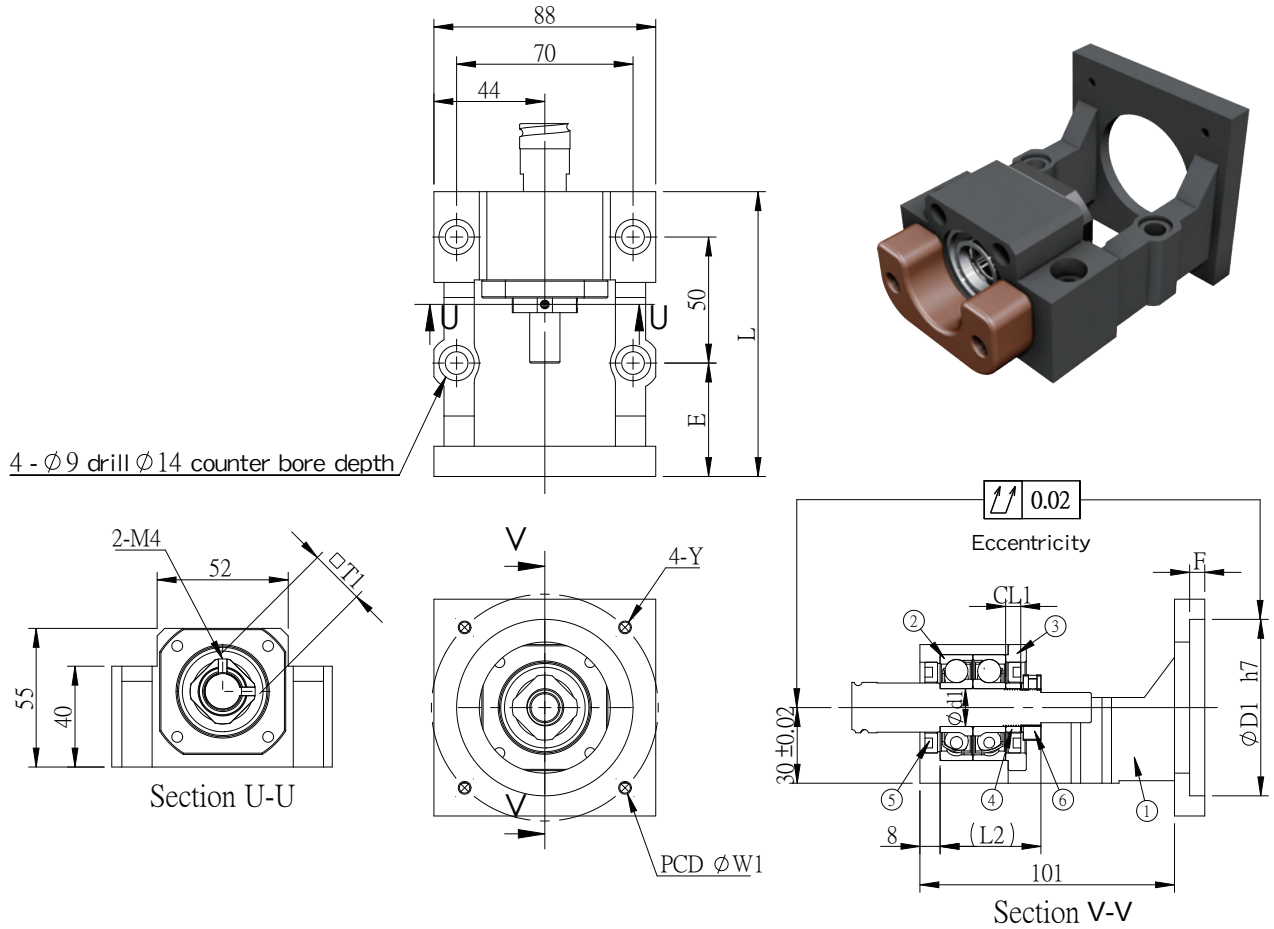


## 三. Motor Bracket MBCS35/40-P17



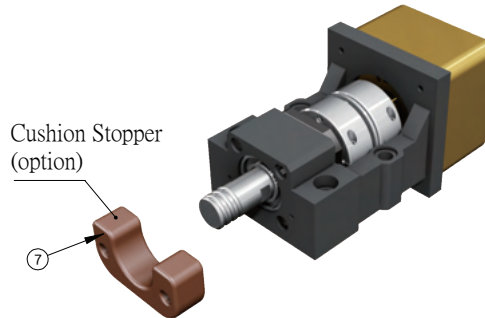
## 四. MBCF20H & MBCS20H-P11 、 SK20-P39 、 SF20-P36 For "Mineral Casting" Base

# Motor Bracket MBCA15 / 20



No.	Part name	Qty
1	Housing	1
2	Bearing MBCA15 (7302A) MBCA20 (7004A)	1 set
3	Holding lid	1
4	Collar	2
5	Seal	2
6	Lock nut	1set
7	Cushion Stopper (option)	1

Heavy load



Unit : mm

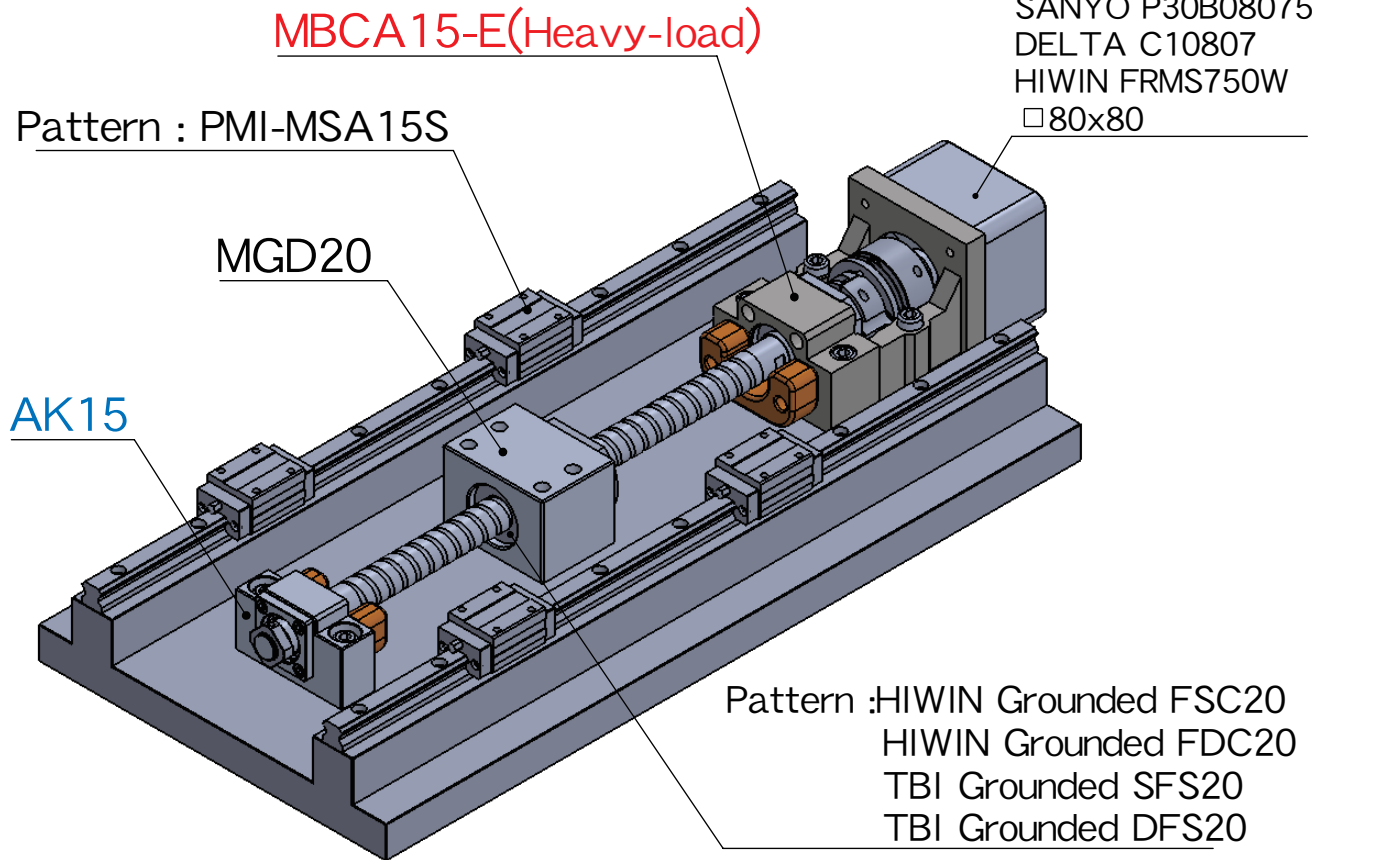
Model No.	D1	W1	Y	L	Shaft diameter d1	CL1	L2	E	F	T1	Weight (Kgs)	Support unit / Supported-side	Suggest Coupling
MBCA15-E	70	90	M6	115	15	6	40	47	8	22	1.95	AK15/AF15	SGS 50C
MBCA15-EP	70	90	M5	113				45	6		1.89		
MBCA15-X	80	100	M6	115				47	8		1.8		
MBCA20-E	70	90	M6	115	20	8	43	47	8	30	1.98	AK20/AF20	SGS 50C
MBCA20-EP	70	90	M5	113				45	6		1.9		
MBCA20-X	80	100	M6	115				47	8		1.82		

Note :

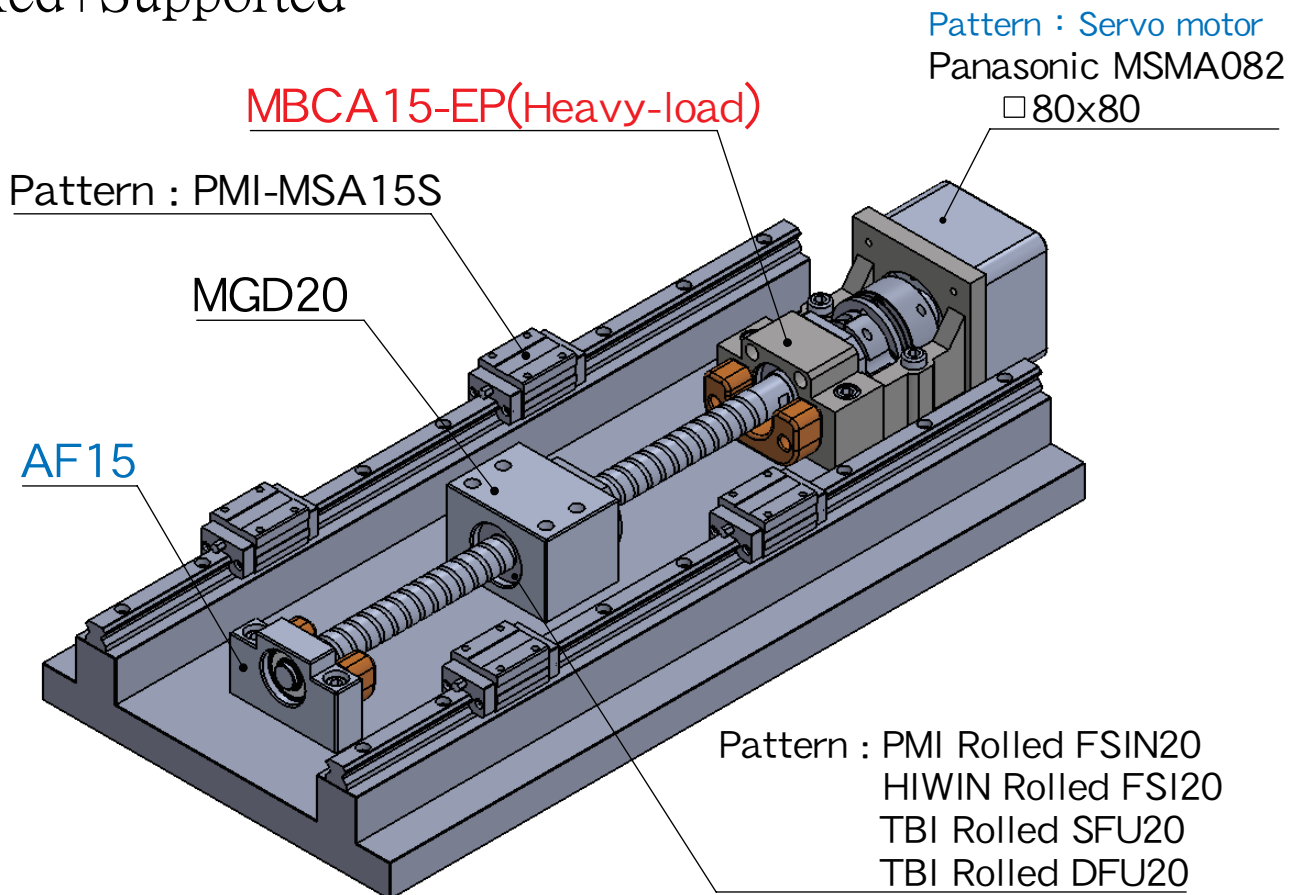
1. The matched bearing in the support unit has already done the preload.
2. The matched P5 bearings are assembled in DF way, which is the most suitable for ball screw use.

# Illustration for MBCA15

## Fixed+Fixed

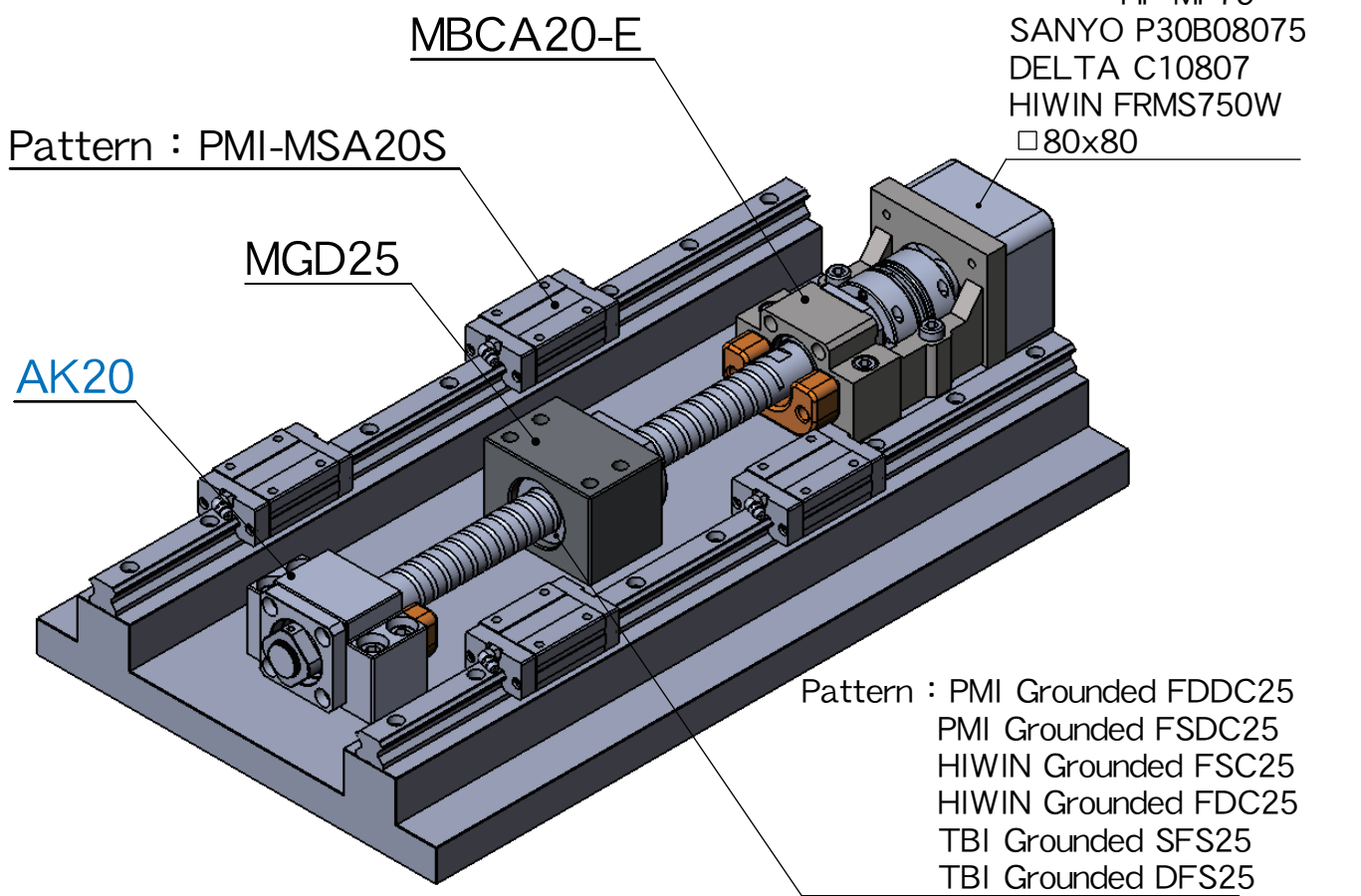


## Fixed+Supported

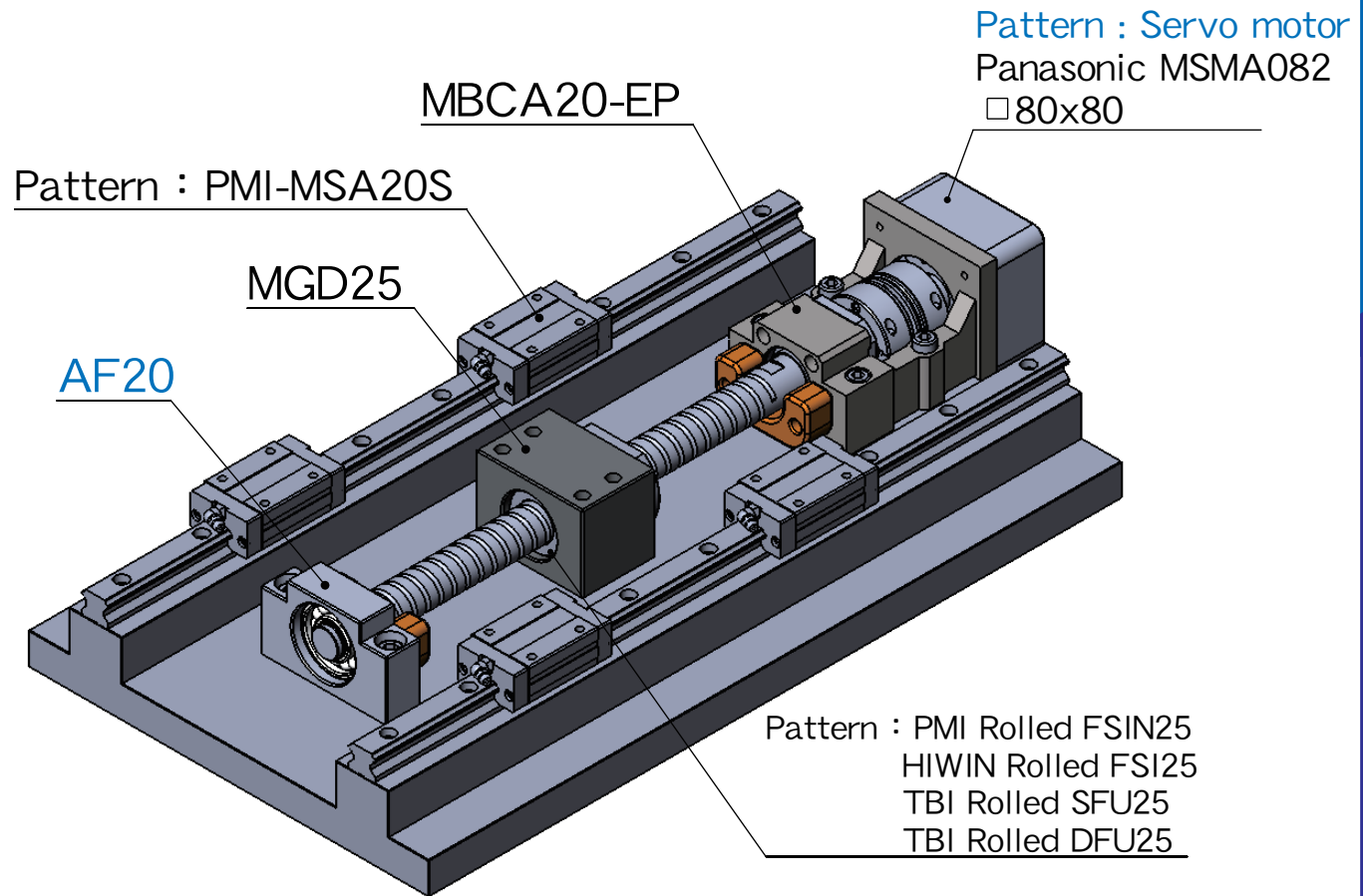


# Illustration for MBCA20

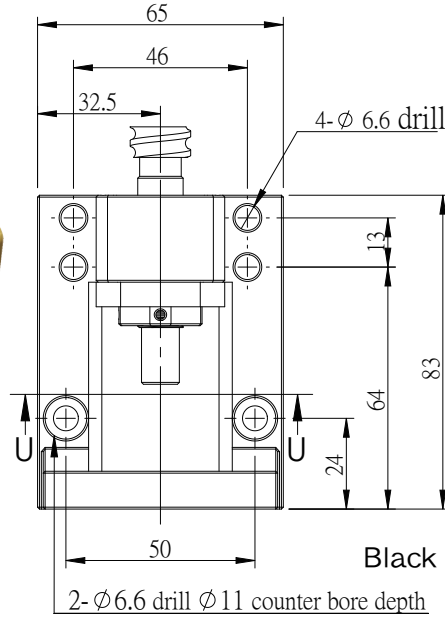
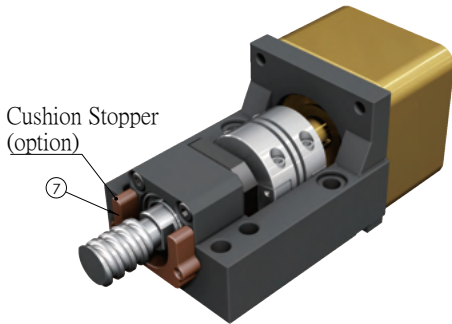
Fixed+Fixed



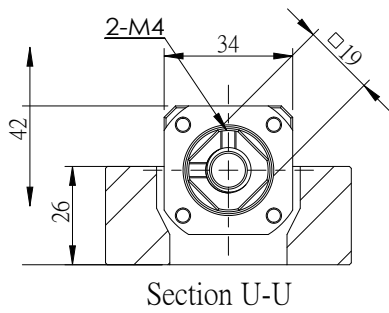
Fixed+Supported



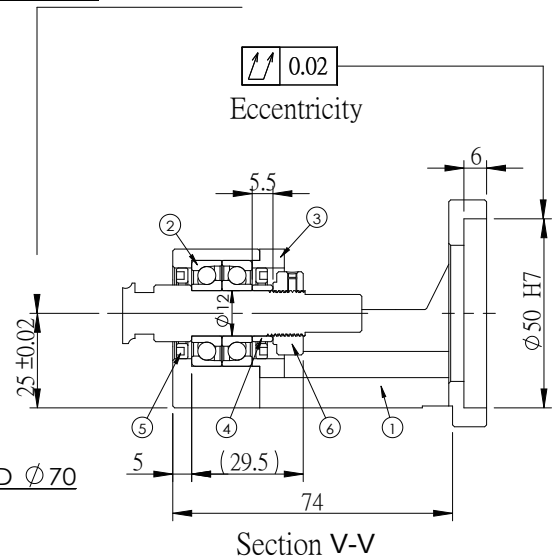
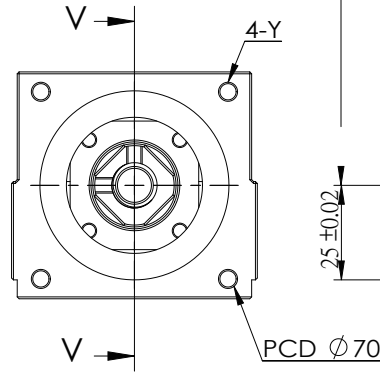
# Motor Bracket MBCB12



Surface treatment:  
Black Oxide / Electroless Nickel Plating



Section U-U



Section V-V

No.	Part name	Qty
1	Housing	1
2	7001 Bearing	1 set
3	Holding lid	1
4	Collar	2
5	Seal	2
6	Lock nut	1set
7	Cushion Stopper (option)	1

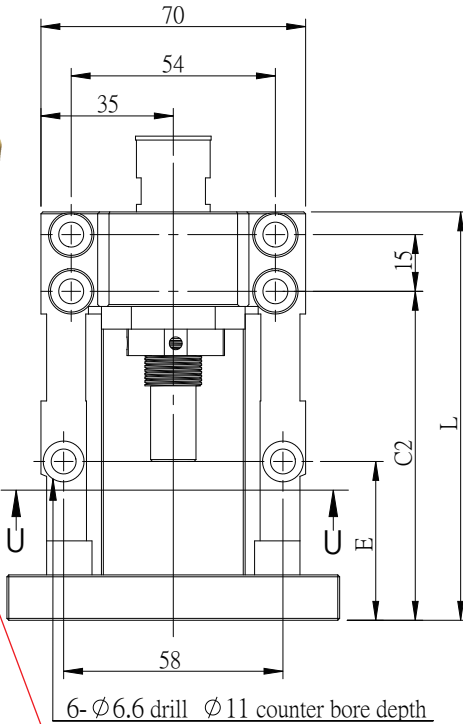
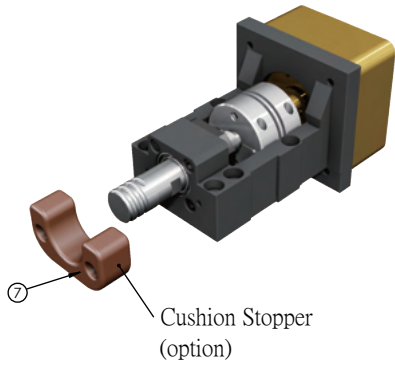
Unit : mm

Model No.	Y	Weight (Kgs)	Support unit	Suggest Coupling
			Supported-side	
MBCB12-D	M5	0.8	BF12	SGS 34C
MBCB12-DP	M4			

Note :

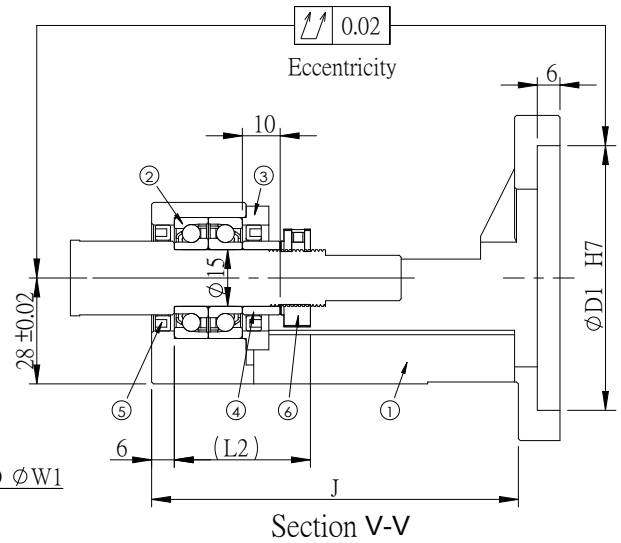
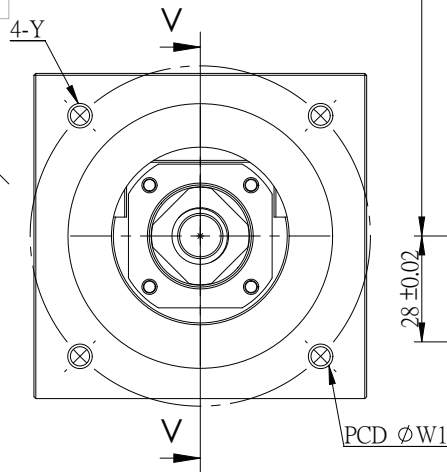
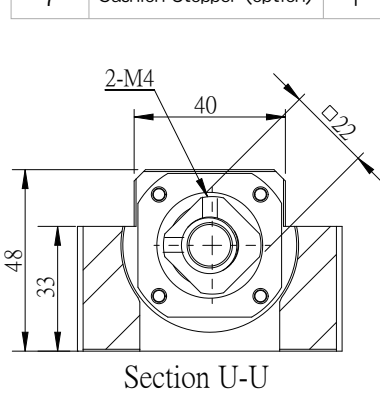
1. The matched bearing in the support unit has already done the preload.
2. The matched P5 bearings are assembled in DF way, which is the most suitable for ball screw use.

# Motor Bracket MBCB15



Surface treatment:  
Black Oxide /  
Electroless Nickel Plating

No.	Part name	Qty
1	Housing	1
2	MBCB15 Bearing 7002	1set
	MBCB15M Bearing 7202	
3	Holding lid	1
4	Collar thin thickness 10	1
	Collar thin thickness 6	2
5	Seal	2
6	Lock nut	1set
7	Cushion Stopper (option)	1



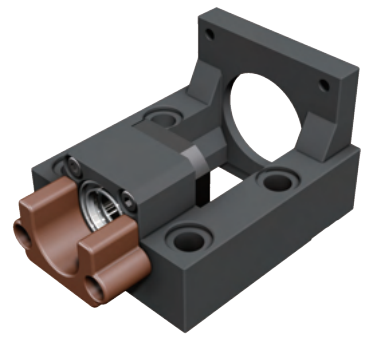
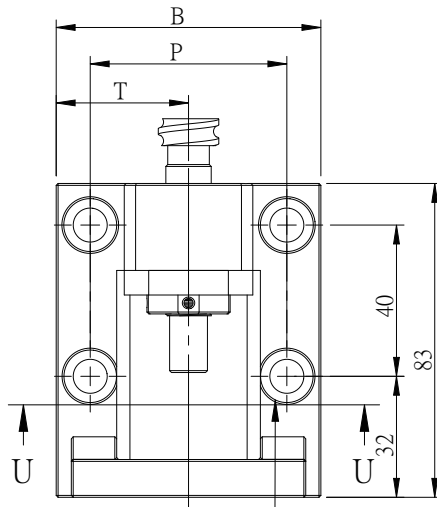
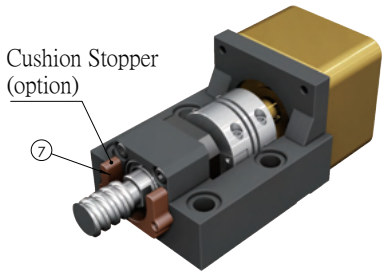
Unit : mm

Model No.	D1	W1	Y	L	L2	E	C2	J	Weight (Kgs)	Support unit	Suggest Coupling
										Supported-side	
MBCB15-D	50	70	M5	98	36	32	77	89	0.98	BF 15	SGS 34C SGS 40C
MBCB15-DP			M4								
MBCB15-E	70	90	M6	108	36	42	87	97	1.39	BF 15	SGS 40C SGS 45C
MBCB15-EP			M5								
MBCB15M-E	70	90	M6	110	40	44	89	99	1.46	BF 15	SGS 40C SGS 45C
MBCB15M-EP			M5								

Note :

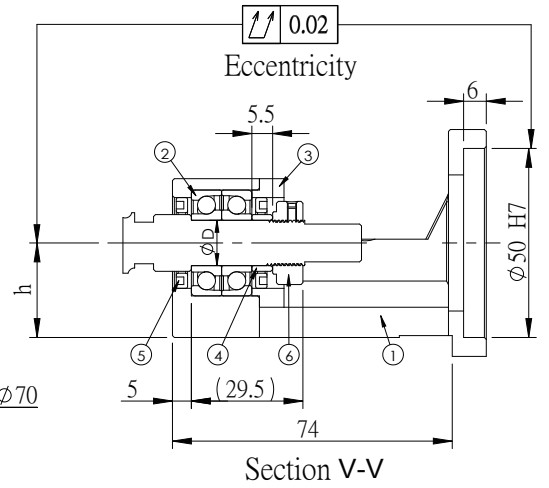
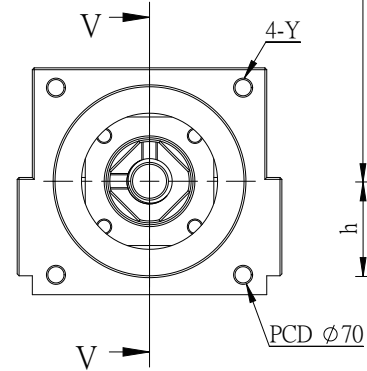
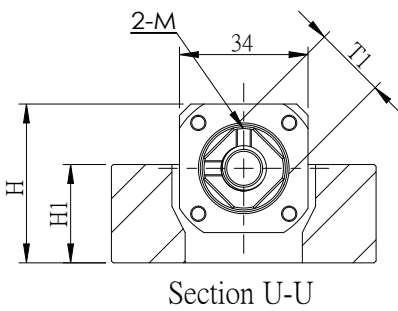
1. The matched bearing in the support unit has already done the preload.
2. The matched P5 bearings are assembled in DF way, which is the most suitable for ball screw use.

# Motor Bracket MBCE10/12、MBCF10/12



Surface treatment:  
Black Oxide  
/  
Electroless Nickel Plating

No.	Part name	Qty
1	Housing	1
2	Bearing	
	MBC*10 with bearings 7000	1 set
	MBC*12 with bearings 7001	
3	Holding lid	1
4	Collar	2
5	Seal	2
6	Lock nut	1set
7	Cushion Stopper (option)	1



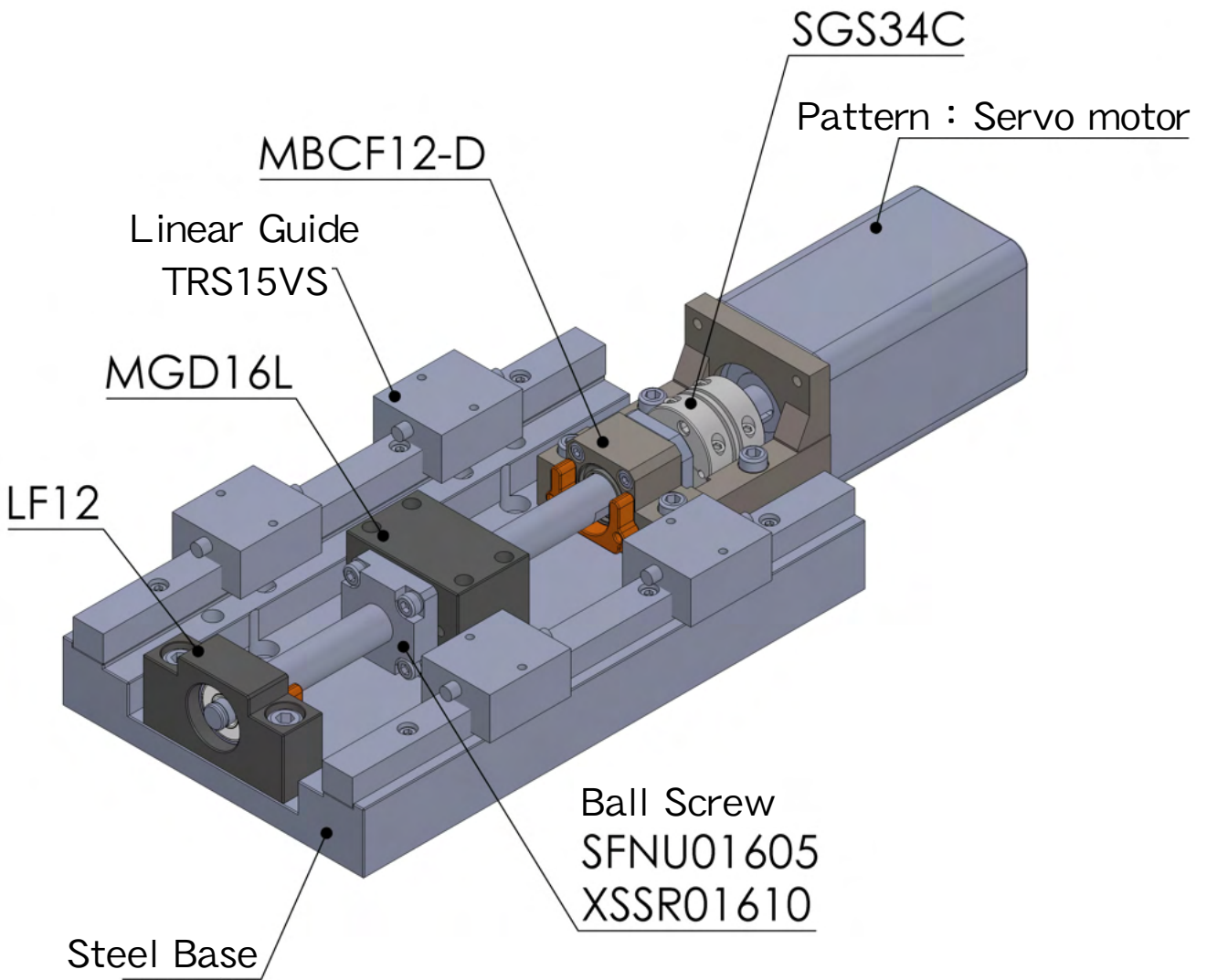
Unit : mm

Model No.	B	P	T	H	H1	h ±0.02	φD	T1	M	Y	S	Q	Weight (Kgs)	Support unit	Suggest Coupling
														Supported-side	
MBCE10-D	70	52	35	42	26	25	10	□16	M3	M5	9	14	0.89	EF10 AF 10	SGS 34C
MBCE10-DP										M4					
MBCE12-D	70	52	35	42	26	25	12	□19	M4	M5	9	14	0.86	EF12 AF 12	SGS 34C
MBCE12-DP										M4					
MBCF10-D	63	50	31.5	37	21	20	10	□16	M3	M5	6.6	11	0.69	LF12 LFA 15	SGS 34C
MBCF10-DP										M4					
MBCF12-D	63	50	31.5	37	21	20	12	□19	M4	M5	6.6	11	0.68	LF12 LFA 15	SGS 34C
MBCF12-DP										M4					

Note :

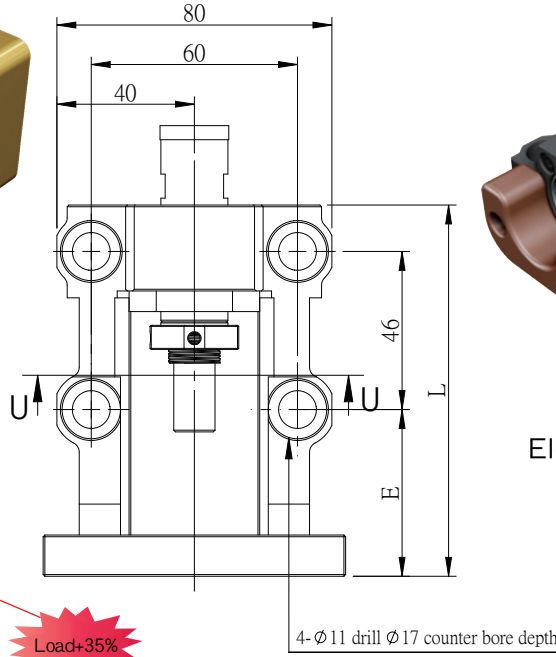
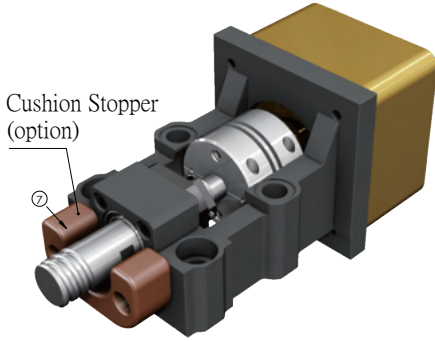
1. The matched bearing in the support unit has already done the preload.
2. The matched P5 bearings are assembled in DF way, which is the most suitable for ball screw use.

# Illustration for MBCF10/12



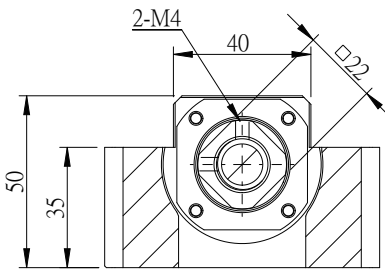


# Motor Bracket MBCE15

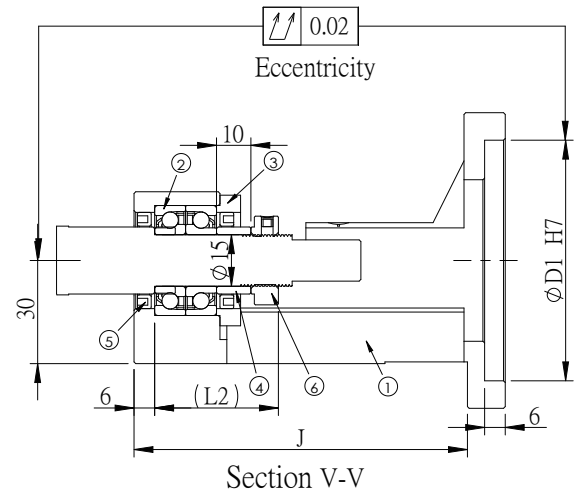
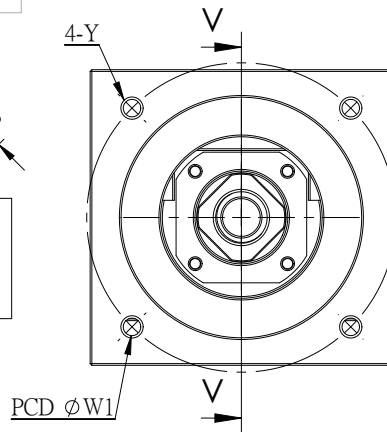


Surface treatment:  
Black Oxide /  
Electroless Nickel Plating

No.	Part name	Qty
1	Housing	1
2	Bearing	1 set
	MBCE15 with bearings 7002	
	MBCE15M with bearings 7202	
3	Holding lid	1
4	Collar	2
5	Seal	2
6	Lock nut	1set
7	Cushion Stopper (option)	1



Section U-U



Section V-V

Unit : mm

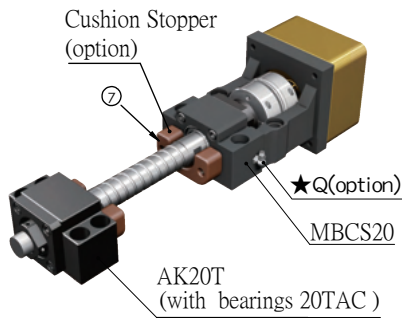
Model No.	D1	W1	Y	L	L2	E	J	Weight (Kgs)	Support unit	Suggest Coupling
									Supported-side	
MBCE15-D	50	70	M5	98	36	38.5	flat	1.09	EF 15 AF 15	SGS 34C SGS 40C
MBCE15-DP			M4							
MBCE15-E	70	90	M6	108	48.5	97	1.54	EF 15 AF 15	SGS 40C SGS 45C	
MBCE15-EP			M5							
MBCE15M-E	70	90	M6	110	40	50.5	99	1.61	EF 15 AF 15	SGS 40C SGS 45C
MBCE15M-EP			M5							

Note :

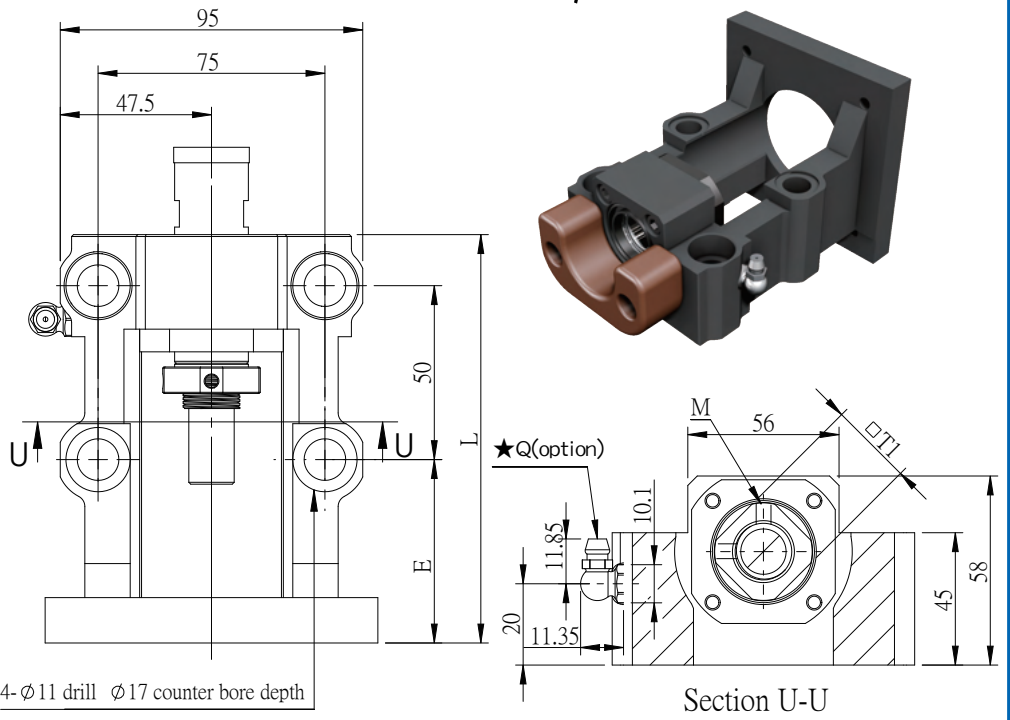
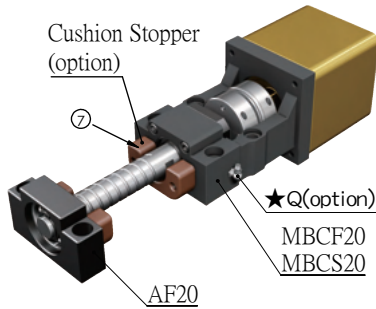
1. The matched bearing in the support unit has already done the preload.
2. The matched P5 bearings are assembled in DF way, which is the most suitable for ball screw use.

# Motor Bracket MBCS15/17/20 / MBCF20

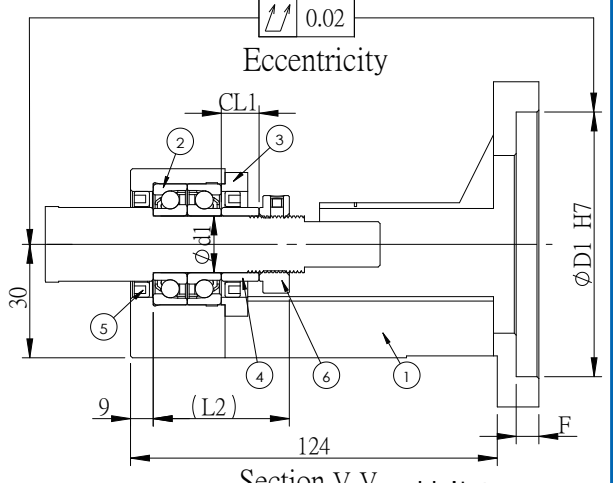
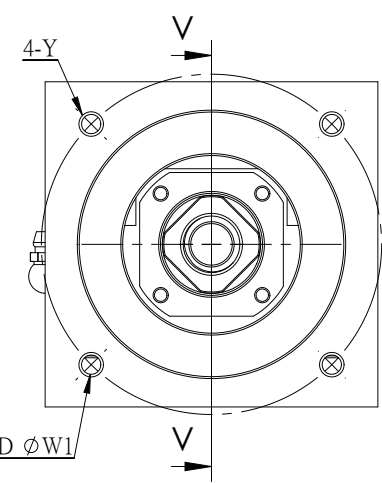
Fig→Fixed+Fixed



Fig→Fixed+Supported



Section U-U



Section V-V Unit : mm

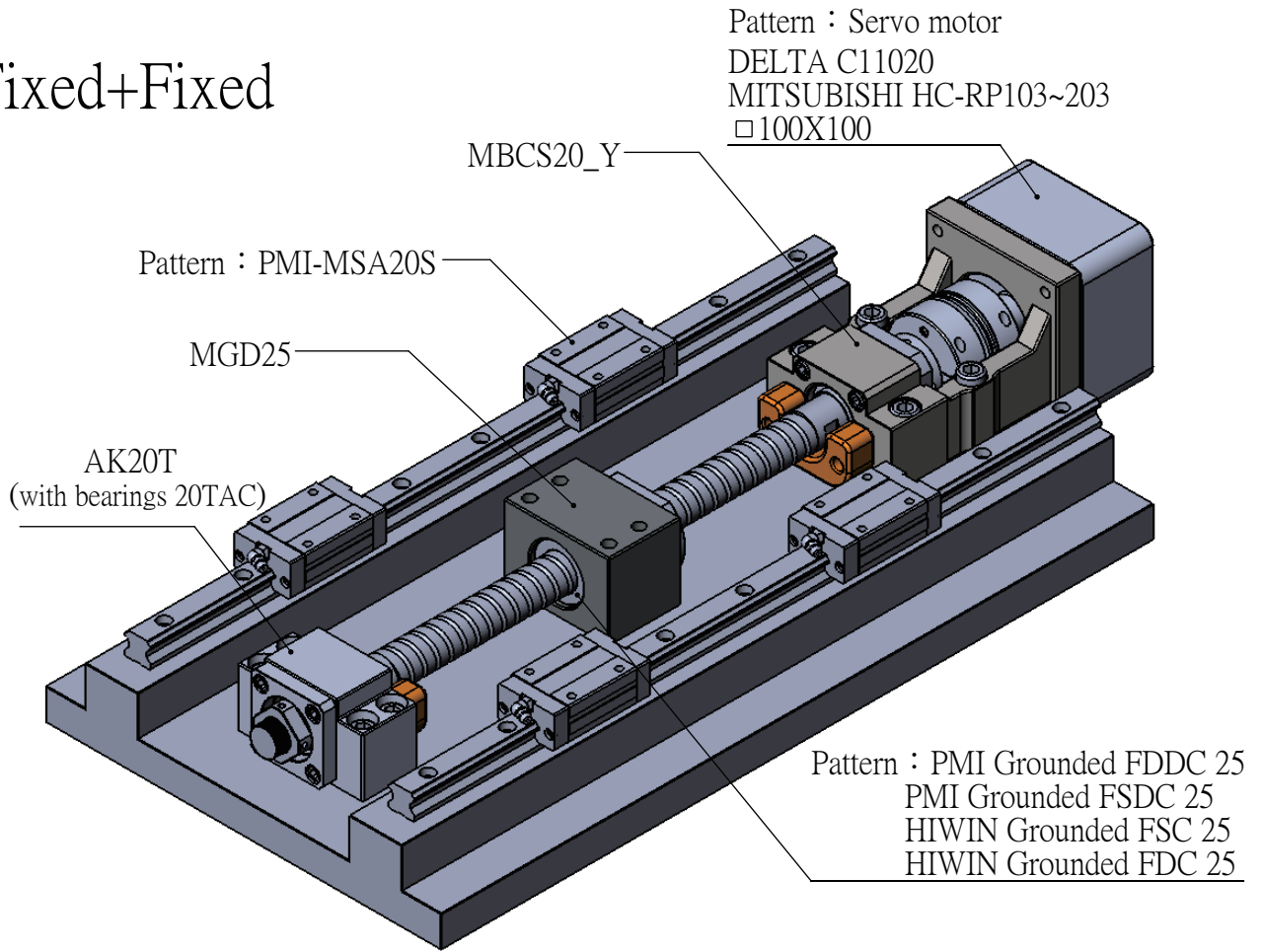
No.	Part name	Qty
1	Housing	1
2	Bearing MBCS15 with bearings 15TAC MBCS17 with bearings 17TAC MBCF20 with bearings 7204 MBCS20 with bearings 20TAC	1set
3	Holding lid	1
4	Collar	2
5	Seal	2
6	Lock nut	1set
7	Cushion Stopper (option)	1

Model No.	D1	W1	Y	L	Shaft diameter d1	CL1	L2	E	F	M	T1	Q	Weight (Kgs)	Support unit Supported-side	Suggest Coupling
MBCS15-X	80	100	M6	140	15	9	47	70	8	2-M4	□22	-	2.77	AF 15 EF 15	SGS 50C
MBCS15-Y	95	115	M8	141				71					SGS 50C		
MBCS15-YP			M6	141				71					SGS 57C		
MBCS15-S	110	130	M8	151				81					SGS 57C		
MBCS15-G				153	83	10	M6	-	SGS 57C						
MBCS17-X	80	100	M6	140	17	9	57	70	8	4-M6	φ36	-	2.7	-	SGS 50C
MBCS17-Y	95	115	M8	141				71					SGS 50C		
MBCS17-YP			M6	141				71					SGS 57C		
MBCS17-S	110	130	M8	151				81					SGS 57C		
MBCS17-G				153	83	10	M6	3.9	SGS 57C						
MBCF20-X	80	100	M6	140	20	11	50	70	8	2-M4	□30	-	2.77	EF 20 AF 20	SGS 50C
MBCF20-Y	95	115	M8	141				71					SGS 50C		
MBCF20-YP			M6	141				71					SGS 57C		
MBCF20-S	110	130	M8	151				81					SGS 57C		
MBCF20-G				153	83	10	M6	3.66	SGS 57C						
MBCS20-X	80	100	M6	140	20	9	57	70	8	4-M6	φ40	-	2.8	AK20T AF20 EF20	SGS 50C
MBCS20-Y	95	115	M8	141				71					SGS 50C		
MBCS20-YP			M6	141				71					SGS 57C		
MBCS20-S	110	130	M8	151				81					SGS 57C		
MBCS20-G				153	83	10	M6	3.66	SGS 57C						
MBCS20-G	110	145	M8	153	83	10	M6	3.78							

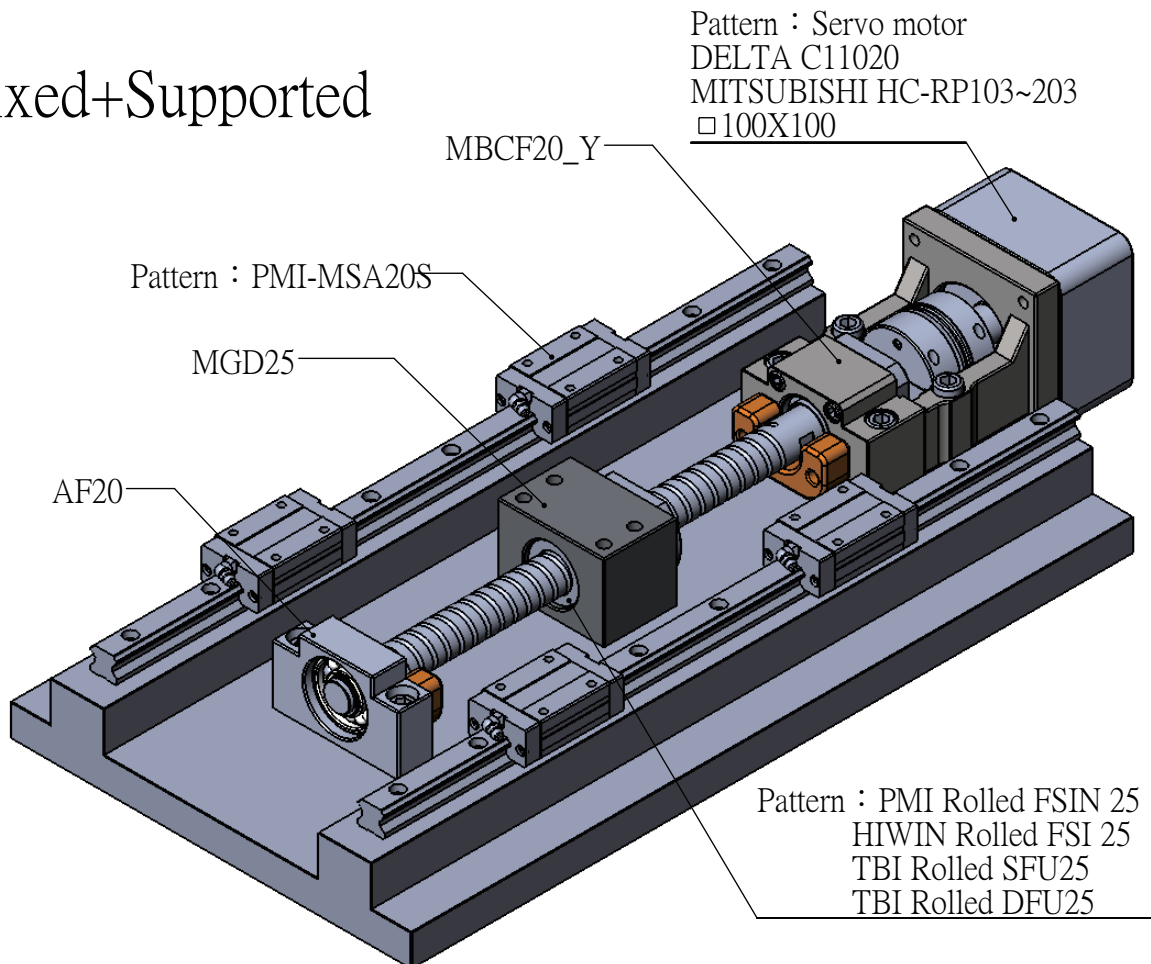
Note : 1. The matched bearing in the support unit has already done the preload.  
 2. The matched bearings are assembled in DF way, which is the most suitable for ball screw use.  
 3. The accuracy of TAC bearing is P4 grade and 7204 is P5 grade.  
 4. The standard type is without Q, if required, please advise in advance.

# Illustration for MBC\_20

## Fixed+Fixed

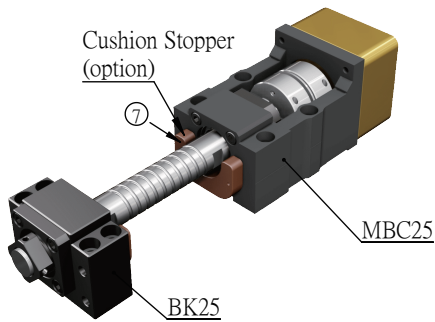


## Fixed+Supported

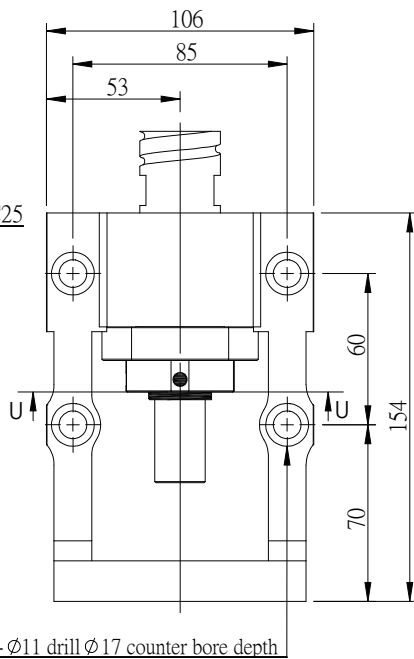
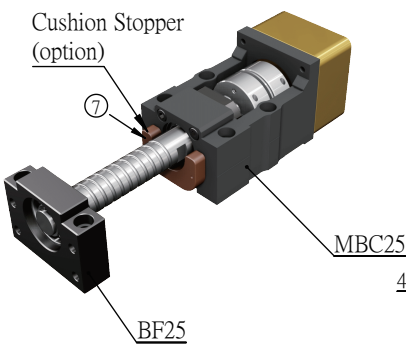


# Motor Bracket MBC20H / MBC25

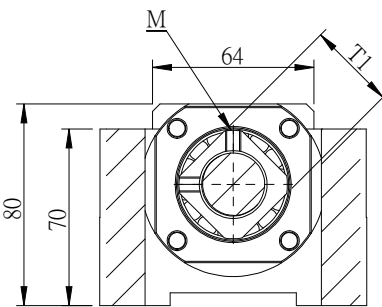
Fig→Fixed+Fixed



Fig→Fixed+Supported

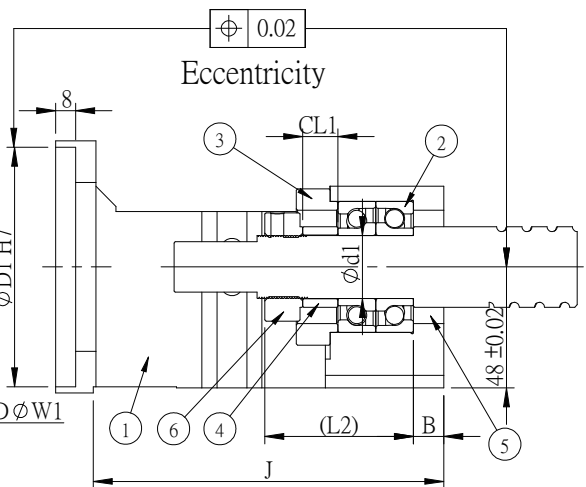
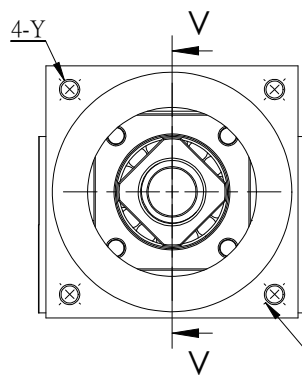


Surface treatment: Black Oxide



Section U-U

No.	Part name	Qty
1	Housing	1
2	Bearing	1set
	MBCF20H with bearings 7204	
	MBCS20H with bearings 20TAC	
	MBC25 with bearings 7205	
3	Holding lid	1
4	Collar	2
5	Seal	2
6	Lock nut	1set
7	Cushion Stopper (option)	1



Section V-V

Unit : mm

Model No.	D1	W1	Y	J	Shaft diameter d1	CL1	B	L2	M	T1	Weight (Kgs)	Support unit		Suggest Coupling
												Supported-side		
MBCF20H-X	80	100	M6	flat	20	11	9	50	2-M4	□30	-	SK20	SF20	SGL 50C SGL 57C
MBCS20H-X														
MBC25-X	80	100	M6	flat	25	14	12	59	2-M6	□35	4.51	BK25 BF25	SGS 57C SGS 65C	
MBC25-Y														
MBC25-YP														

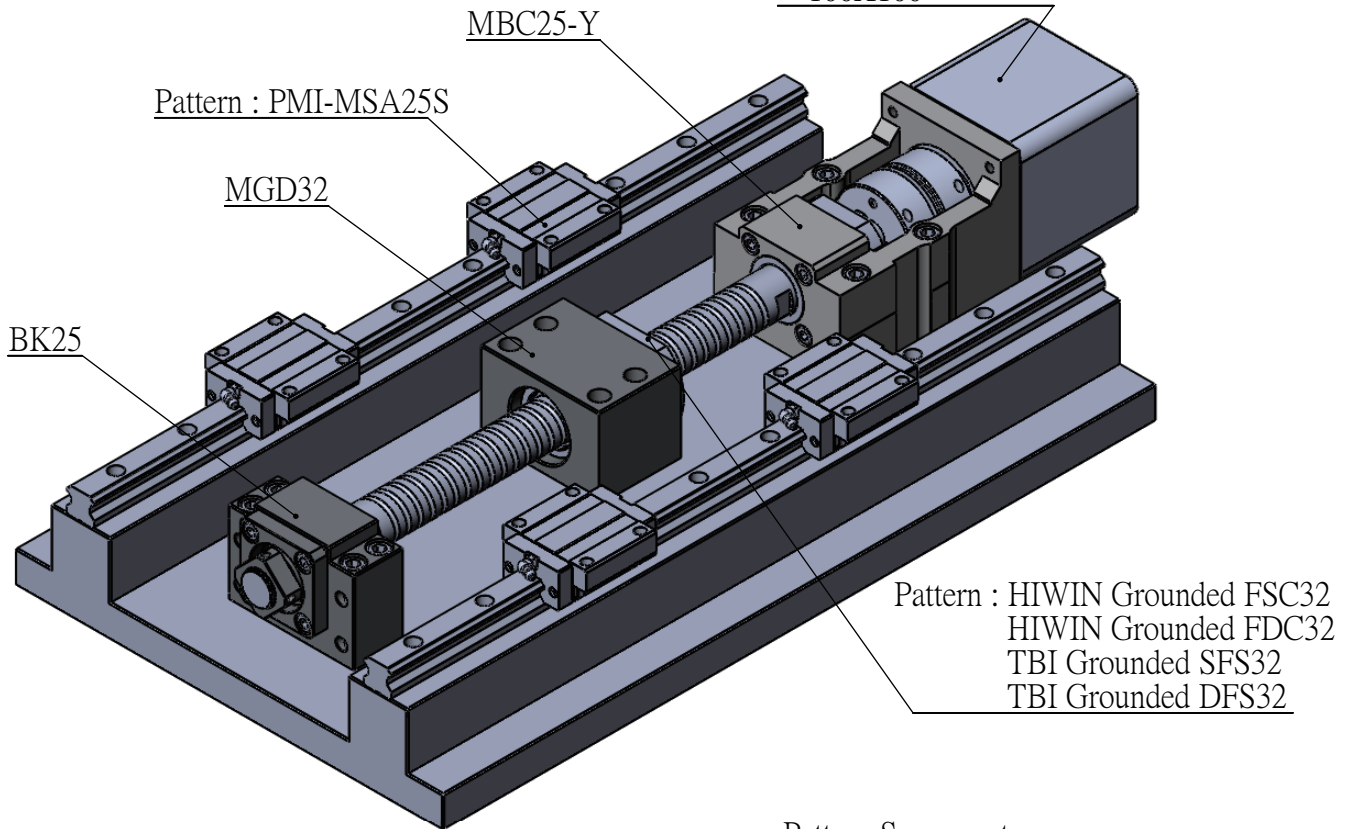


Note : 1. The matched bearing in the support unit has already done the preload.  
 2. The matched bearings are assembled in DF way, which is the most suitable for ball screw use.  
 3. The accuracy of TAC bearing is P4 grade and 7204、7205 is P5 grade.

# Illustration for MBC25

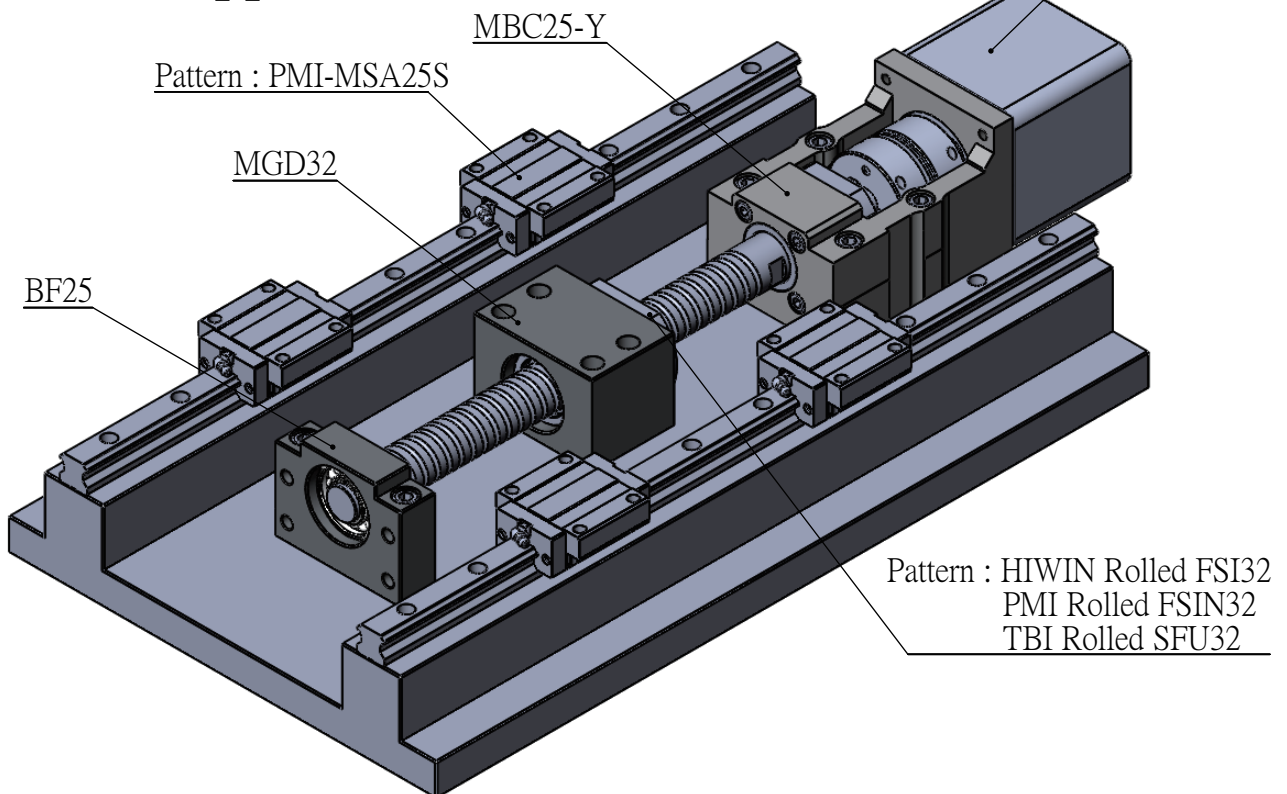
## Fixed+Fixed

Pattern: Servo motor  
 DELTA C11020  
 MITSUBISHI HC-RP103~203  
 □100X100

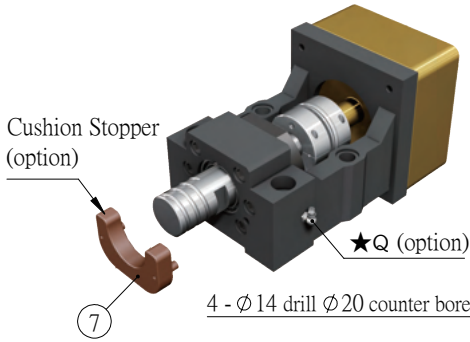


## Fixed+Supported

Pattern: Servo motor  
 DELTA C11020  
 MITSUBISHI HC-RP103~203  
 □100X100

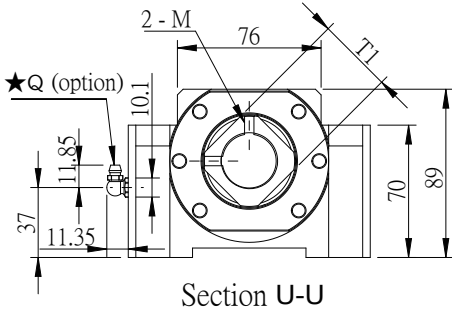
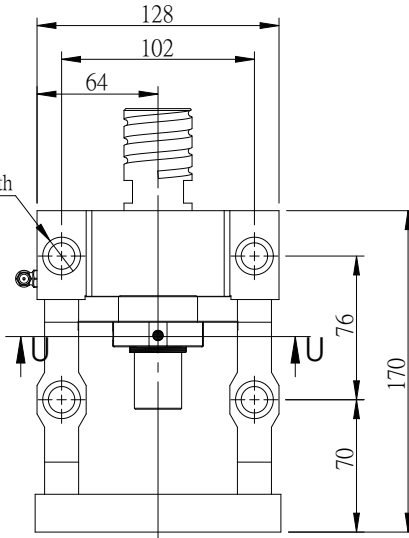


# Motor Bracket MBCS25/30 / MBCF30

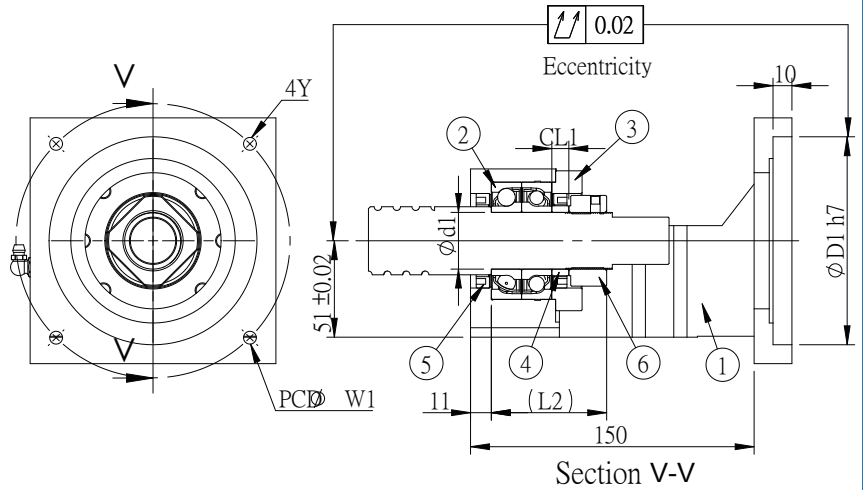


No.	Part name	Qty
1	Housing	1
2	Bearing MBCS25 with bearings 25TAC MBCS30 with bearings 30TAC MBCF30 with bearings 7206	1set
3	Holding lid	1
4	Collar	2
5	Seal	2
6	Lock nut	1set
7	Cushion Stopper (option)	1

4 -  $\phi 14$  drill  $\phi 20$  counter bore depth



Section U-U



Section V-V

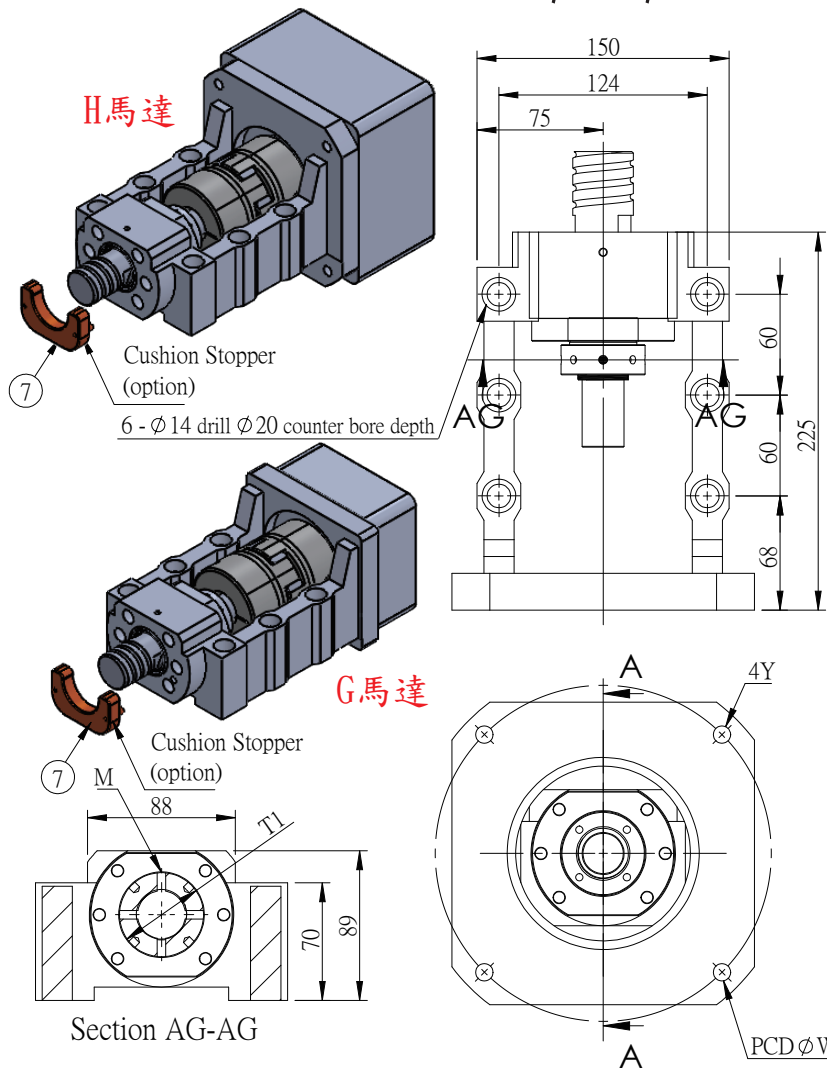
Unit : mm

Model No.	D1	W1	Y	Shaft diameter d1	CL1	L2	M	T1	Q	Weight (Kgs)	Support unit	Suggest
											Supported-side	Coupling
MBCS25-Y	95	115	M8	25	15	65	4-M6	$\phi 45$	-	6.75	SBK25 SF25	SGL 65C
MBCS25-YP			M6									
MBCS25-S	110	130	M8							6.45		
MBCS25-G		145	M6									
MBCF30-Y	95	115	M8	30	9	61	2-M4	$\square 40$	-	6.56	BK30 BF30	SGL 65C
MBCF30-YP			M6									
MBCF30-S	110	130	M8							-		
MBCF30-G		145	M6									
MBCS30-Y	95	115	M8	30	15	65	4-M6	$\phi 50$	-	-	SBK30 / BK30 BF30	SGL 65C
MBCS30-YP			M6									
MBCS30-S	110	130	M8							-		
MBCS30-G		145	M6									

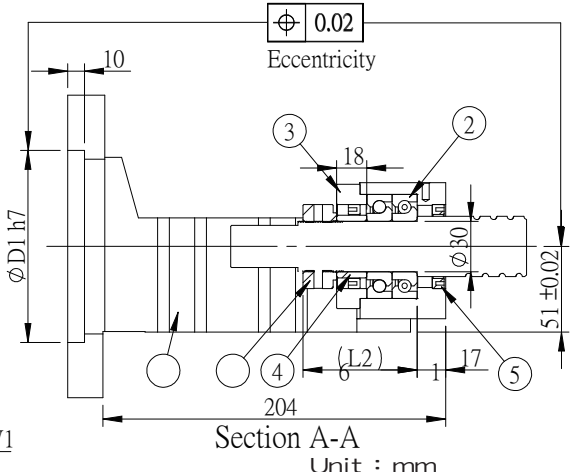
- Note :
1. The matched bearing in the support unit has already done the preload.
  2. The matched bearings are assembled in DF way, which is the most suitable for ball screw use.
  3. The accuracy of TAC bearing is P4 grade and 7206 is P5 grade.
  4. The standard type is without Q , if required, please advise in advance.



# Motor Bracket MBCS25/30 / MBCF30 (Long Type)



No.	Part name	Qty
1	Housing	1
2	Bearing MBCS25 with bearings 25TAC MBCS30 with bearings 30TAC MBCF30 with bearings 7206	1set
3	Holding lid	1
4	Collar	2
5	Seal	2
6	Lock nut	1set
7	Cushion Stopper (option)	1



Model No.	D1	W1	Y	Shaft diameter d1	CL1	J	L1	L2	M	T1	Weight (Kgs)	Support unit	Suggest Coupling
												Supported-side	
MBCS25W-G	110	145	M8	25	18	204	17	68	4-M6	Ø45	-	SBK25/SF25	ROTEX GS38
※ MBCS25-I	130	165	M10										ROTEX GS28
※ MBCS25-J	150	185	M10										MTC-65C-RD
MBCS25-H	114.3	200	M12										ROTEX GS28
MBCS30W-G	110	145	M8	30	18	204	17	68	4-M6	Ø50	-	SBK30/BF30	MTC-65C-RD
※ MBCS30-I	130	165	M10										ROTEX GS28
※ MBCS30-J	150	185	M10										ROTEX GS28
MBCS30-H	114.3	200	M12										MTC-65C-RD
MBCF30W-G	110	145	M8	30	18	204	17	70	4-M6	Ø50	-	BK30/BF30	ROTEX GS38
※ MBCF30-I	130	165	M10										ROTEX GS28
※ MBCF30-J	150	185	M10										MTC-65C-RD
MBCF30-H	114.3	200	M12										ROTEX GS28

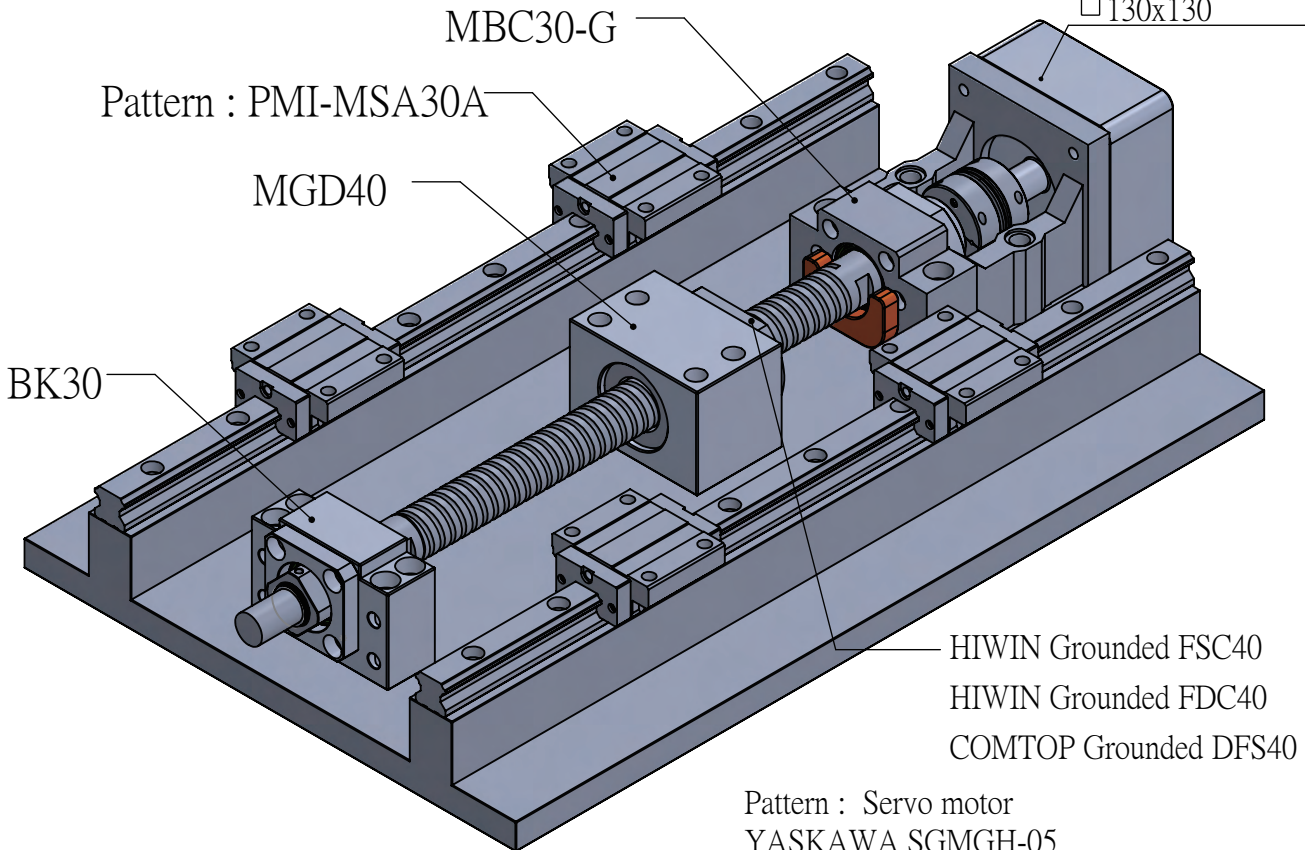
※Customized.

- Note : 1. The matched bearing in the support unit has already done the preload.  
 2. The matched bearings are assembled in DF way, which is the most suitable for ball screw use.  
 3. The accuracy of TAC bearing is P4 grade and 7206 is P5 grade.

# Illustration for MBC30

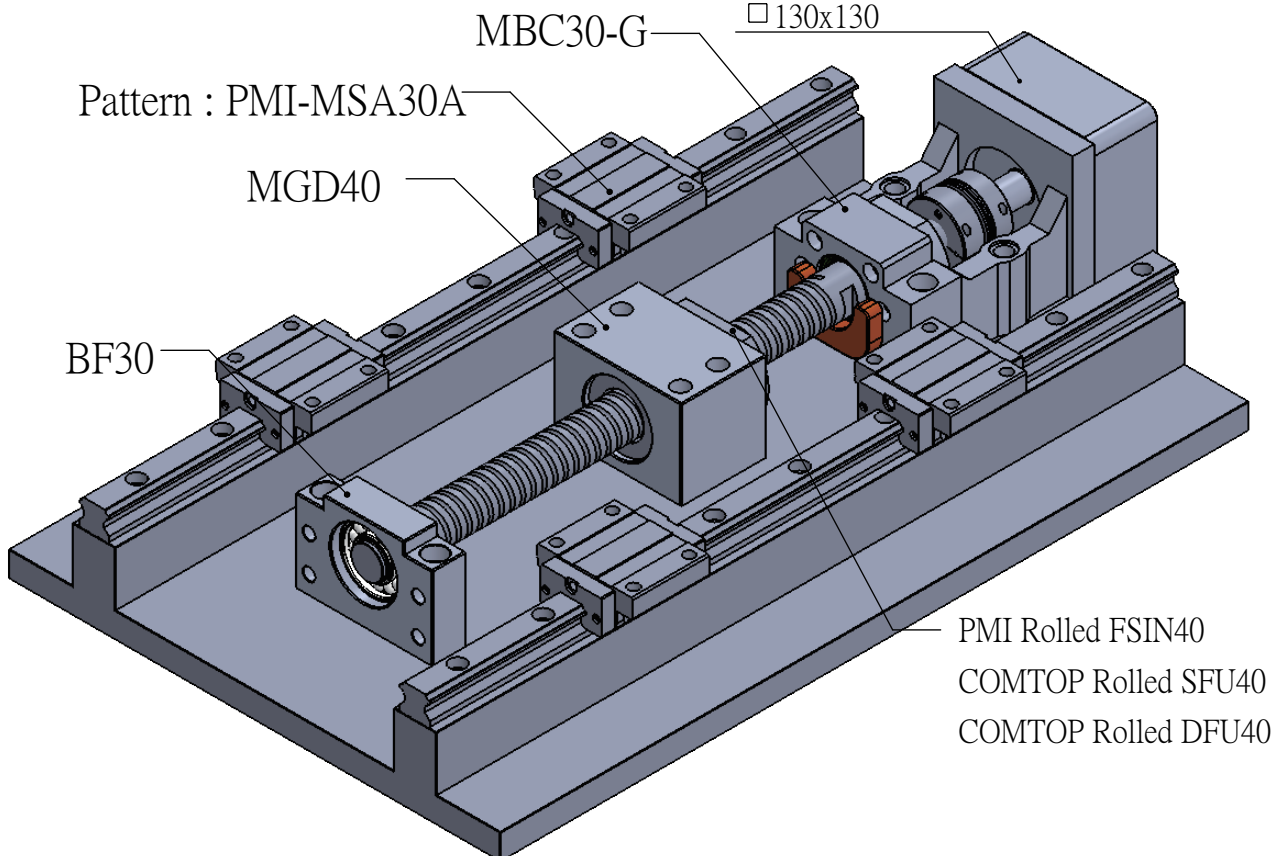
## Fixed+Fixed

Pattern : Servo motor  
 YASKAWA SGMGH-05  
 MITSUBISHI  
 HF-SP51-81/HF-SP52-152  
 DELTA G11303  
 □ 130x130



## Fixed+Supported

Pattern : Servo motor  
 YASKAWA SGMGH-05  
 MITSUBISHI HF-SP51-81  
 HF-SP52-152  
 DELTA G11303  
 □ 130x130



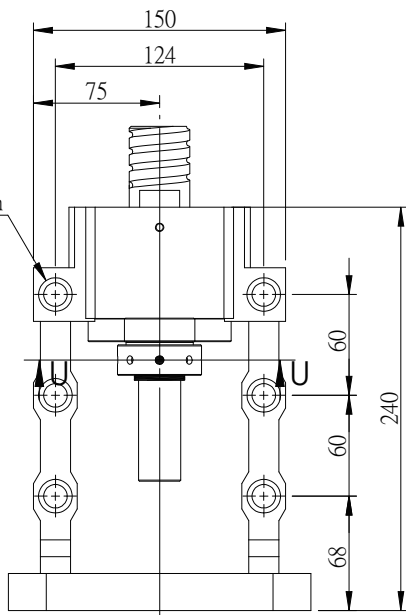




# Motor Bracket MBCK25/30/35/40

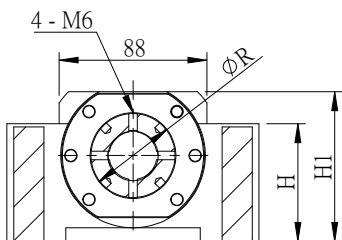
No.	Part name	Qty
1	Housing	1
2	Bearing Use TAC bearings	1set
3	Holding lid	1
4	Collar	2
5	Seal	2
6	Lock nut	1set
7	Cushion Stopper (option)	1

6 -  $\phi 14$  drill  $\phi 20$  counter bore depth

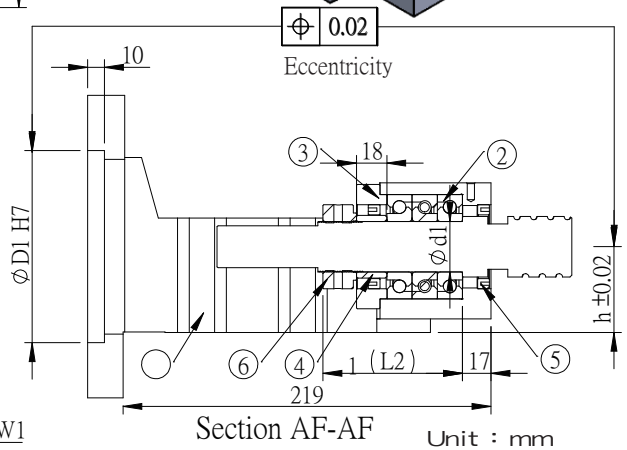
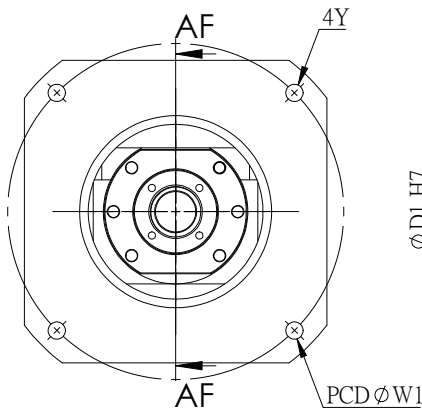


Cushion Stopper (option)

7



Section U-U



Section AF-AF

Unit : mm

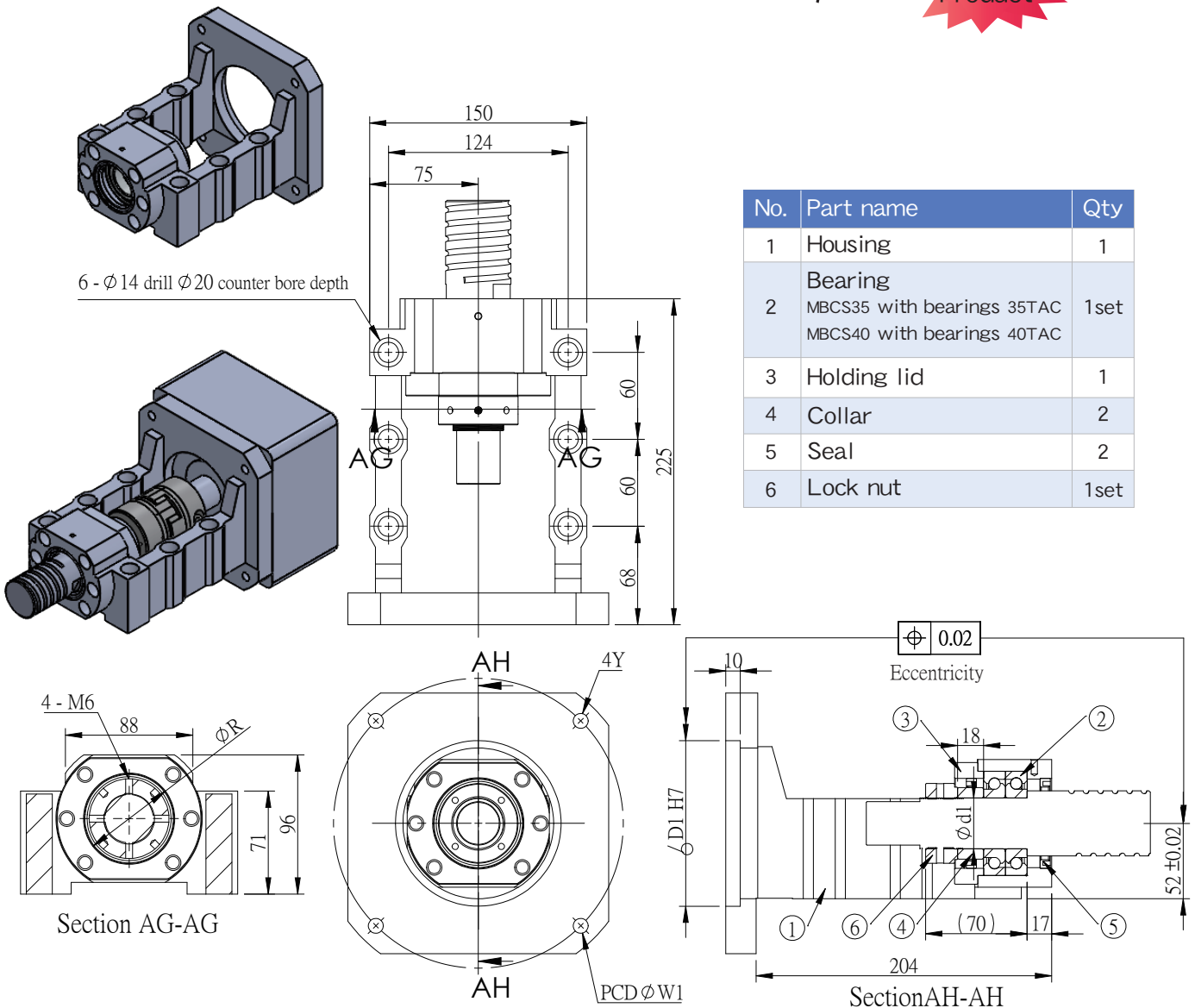
Model No.	D1	W1	Y	h $\pm 0.02$	Shaft diameter d1	L2	R	H	H1	Weight (Kgs)	Support unit	Suggest Coupling
											Supported-side	
MBCK25-G	110	145	M8	51	25	83	$\phi 45$	70	89	-	SBK25/SF25	ROTEX GS38
※ MBCK25-I	130	165	M10									ROTEX GS28
※ MBCK25-J	150	185	M10									MTC-65C-RD
MBCK25-H	114.3	200	M12									ROTEX GS28
MBCK30-G	110	145	M8	51	30	83	$\phi 50$	70	89	-	SBK30/BF30	MTC-65C-RD
※ MBCK30-I	130	165	M10									ROTEX GS28
※ MBCK30-J	150	185	M10									ROTEX GS38
MBCK30-H	114.3	200	M12									MTC-65C-RD
MBCK35-G	110	145	M8	52	35	85	$\phi 55$	71	96	-	SBK35/BF35	ROTEX GS28
※ MBCK35-I	130	165	M10									ROTEX GS38
※ MBCK35-J	150	185	M10									MTC-65C-RD
MBCK35-H	114.3	200	M12									ROTEX GS28
MBCK40-G	110	145	M8	52	40	85	$\phi 60$	71	96	-	SBK40/SF40	MTC-65C-RD
※ MBCK40-I	130	165	M10									ROTEX GS28
※ MBCK40-J	150	185	M10									ROTEX GS38
MBCK40-H	114.3	200	M12									MTC-65C-RD

※Customized ◦

Note :1. The matched bearing in the support unit has already done the preload.

2. The matched P5 bearings are assembled in DFD way, which is the most suitable for ball screw use.

# Motor Bracket MBCS35/40



No.	Part name	Qty
1	Housing	1
2	Bearing MBCS35 with bearings 35TAC MBCS40 with bearings 40TAC	1set
3	Holding lid	1
4	Collar	2
5	Seal	2
6	Lock nut	1set

Unit : mm

	Model No.	D1	W1	Y	Shaft diameter d1	R	Weight (Kgs)	Support unit	Suggest Coupling
								Supported-side	
※	MBCS35-G	110	145	M8	35	Ø55	-	SBK35 BF35	ROTEX GS38 ROTEX GS28 MTC-65C-RD
※	MBCS35-I	130	165	M10					
※	MBCS35-J	150	185	M10					
	MBCS35-H	114.3	200	M12					ROTEX GS28 MTC-65C-RD
※	MBCS40-G	110	145	M8	40	Ø60	8.5	SBK40 SF40	ROTEX GS38 ROTEX GS28 MTC-65C-RD
※	MBCS40-I	130	165	M10					
※	MBCS40-J	150	185	M10					
	MBCS40-H	114.3	200	M12					

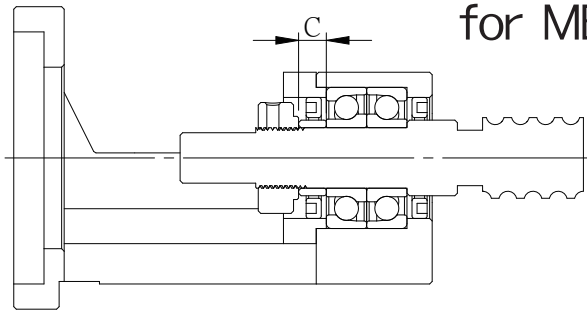
※Customized.

Note :1. The matched bearing in the support unit has already done the preload.

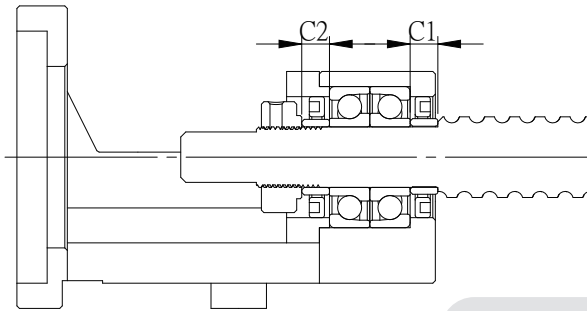
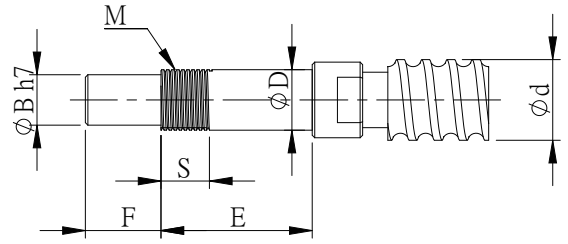
2. The matched P5 bearings are assembled in DF way, which is the most suitable for ball screw use.

## Recommended shaft end shape (Fixed-side)

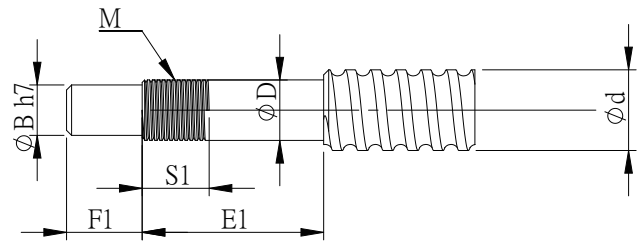
### for MBC types



Ground Ballscrew



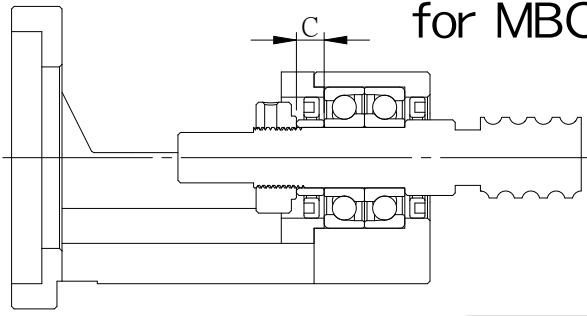
Rolled Ballscrew



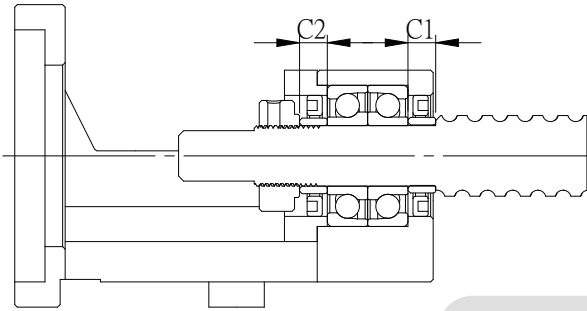
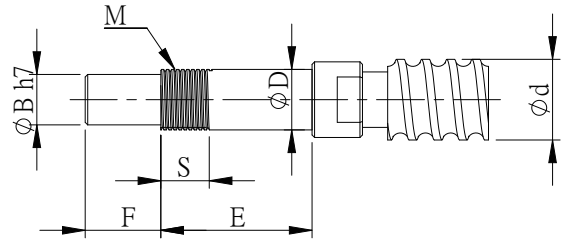
Unit : mm

Model No.	Ballscrew shaft OD	Shaft support portion OD					Metric screw thread			Length of Sleeve				
			B	E	E1	F	F1	M	S	S1	C	C1	C2	
MBC types	d	D	B	E	E1	F	F1	M	S	S1	C	C1	C2	
MBCE10 MBCF10	12/14/15	10 <sup>-0.005</sup> <sup>-0.015</sup>	8	30	36	15		M10X1	10	12	5.5	5.5		
MBCB12	14/15/16	12 <sup>-0.005</sup> <sup>-0.017</sup>	10	30	36	15		M12X1	10	12	5.5	5.5		
MBCE12 MBCF12														
MBCB15	18/20	15 <sup>-0.005</sup> <sup>-0.017</sup>	12	40	40	20		M15X1	15	12	10	6	6	
MBCB15M													10	
MBCE15													10	
MBCE15M													6	10
MBCA15													6	
MBCS15			53	62	25			16		9				
MBCS17	20/25	17 <sup>-0.005</sup> <sup>-0.017</sup>	15	60	69	19		M17X1		23		9		
MBCF20	25/28	20 <sup>-0.006</sup> <sup>-0.017</sup>	17	53	64	27		M20X1		16		11		
MBCS20					60	69	25				23	9		
MBCA20					43	51	22				16	8		
MBC25	30/32/36	25 <sup>-0.006</sup> <sup>-0.017</sup>	20	62	76	33	30	M25X1.5		20		14		
MBCS25					67	82	27				26	15		
MBCF30	36/40	30 <sup>-0.010</sup> <sup>-0.020</sup>	25	64	73	30		M30X1.5		25		9		
MBCS30					67	82	27				26	15		

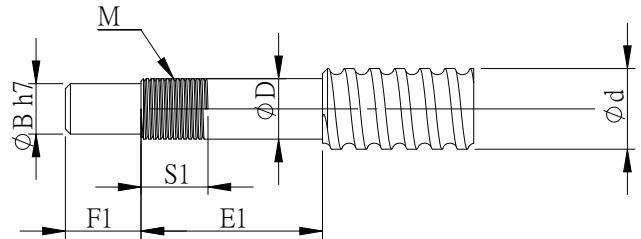
# Recommended shaft end shape (Fixed-side) for MBC (Long Type)



Ground Ballscrew



Rolled Ballscrew



Unit : mm

Model No.	Ballscrew shaft OD	Shaft support portion OD	Ground Ballscrew					Metric screw thread			Length of Sleeve												
			B	E	E1	F	F1	M	S	S1	C	C1	C2										
MBC型	d	D																					
MBCS25W-G	30/32/36	25 <sup>-0.005</sup> -0.020	20	71	89	60	M25x1.5	26	18	C	C1	C2											
MBCS25-I						60																	
MBCS25-J						58																	
MBCS25-H						40																	
MBCK25-G						60																	
MBCK25-I						60																	
MBCK25-J						58																	
MBCK25-H						40																	
MBCS30W-G						36/40							30 <sup>-0.005</sup> -0.020	25	71	89	60	M30x1.5	26	18	C	C1	C2
MBCS30-I																	60						
MBCS30-J	58																						
MBCS30-H	40																						
MBCF30W-G	60																						
MBCF30-I	60																						
MBCF30-J	58																						
MBCF30-H	40																						
MBCK30-G	60																						
MBCK30-I	60																						
MBCK30-J	58																						
MBCK30-H	40																						
MBCS35-G	45	35 <sup>-0.006</sup> -0.025	30	74	92	57	M35x1.5	30	18	C	C1	C2											
MBCS35-I						57																	
MBCS35-J						55																	
MBCS35-H						37																	
MBCK35-G						57																	
MBCK35-I						57																	
MBCK35-J						55																	
MBCK35-H						37																	
MBCS40-G						50							40 <sup>-0.006</sup> -0.025	35	74	92	57	M40x1.5	30	18	C	C1	C2
MBCS40-I																	57						
MBCS40-J	55																						
MBCS40-H	37																						
MBCK40-G	57																						
MBCK40-I	57																						
MBCK40-J	55																						
MBCK40-H	37																						